



32 Easemore Road, Redditch, B98 8HA

£1,450 Per month



32 Easemore Road, Redditch, B98 8HA

£1,450 Per month

New to the market, this spacious mid-terrace three bedroom family home is located in the popular residential area of Redditch.

The property benefits from a long entrance hallway offering immediate access to the two ground floor reception rooms, one of which could easily double as a fourth bedroom or home office.

Further down the hallway is a large newly fitted modern kitchen with appliances, access to the rear garden and also a modern shower room and WC. Stairs lead from the hallway to the first landing, offering two spacious double bedrooms with front and rear views. A second staircase leads to the top floor of the property and into a third large double bedroom and private ensuite shower room.

Offered on an unfurnished basis, with neutral decoration throughout and plenty of natural light.

Easemore Road is close to numerous amenities and local transport links, offering just a 10 minute walk to the town centre and Kingfisher Shopping Centre.

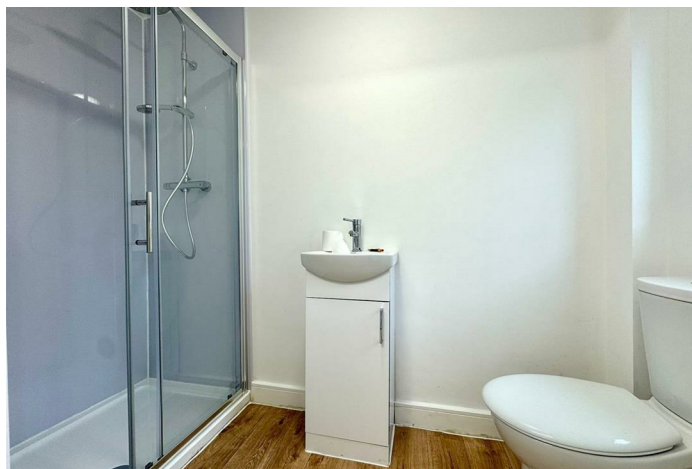
* Sorry, no allocated parking with this property *

Description



Situation

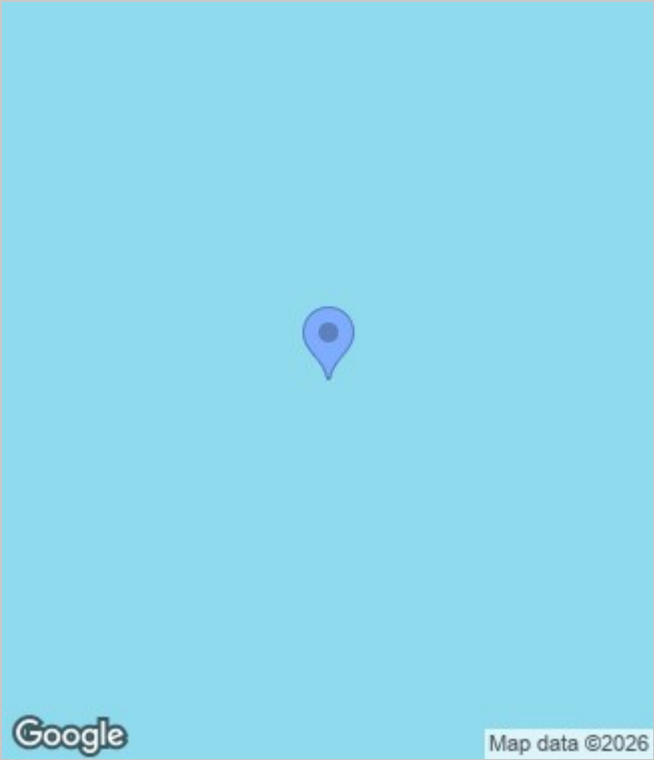
Unfurnished
Council Tax Band: A
Available: 9th February 2026



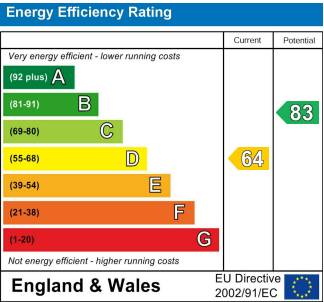
Floor Plans



Area Map



Energy Performance Graph



These particulars, whilst believed to be accurate are set out as a general outline only for guidance and do not constitute any part of an offer or contract. Intending purchasers should not rely on them as statements of representation of fact, but must satisfy themselves by inspection or otherwise as to their accuracy. No person in this firms employment has the authority to make or give any representation or warranty in respect of the property.