

A photograph of a modern, three-story brick building. The building features a central glass-enclosed staircase that runs vertically through the middle. The brickwork is a warm, reddish-brown color. There are several windows of different sizes, some with black frames. A set of concrete stairs with yellow safety stripes leads up to a glass entrance. To the right, another set of concrete stairs leads up to a higher level. A red fire alarm box is visible on the brick wall near the stairs. The sky is blue with some clouds.

BRICK
MANAGEMENT + LETTINGS

Apartment 10 4 Camden Drive, Birmingham, B1 3LQ
£1,000 Per month



Apartment 10 4 Camden Drive, Birmingham, B1 3LQ

£1,000 Per month

New to the market, this impressive one double bedroom apartment is located on the second floor of the new Scholars Quarter development in the heart of the Jewellery Quarter, just a short walk from Birmingham city centre and numerous local amenities.

The property benefits from a long entrance hallway leading into an open plan living room/dining area with contemporary wooden flooring, stylish grey kitchen with integrated appliances, a large double bedroom which is carpeted and a luxury bathroom with bath and shower.

Offered on a furnished basis, with video-entry phone access and neutral decoration throughout.

* Sorry, no allocated parking with this property. *

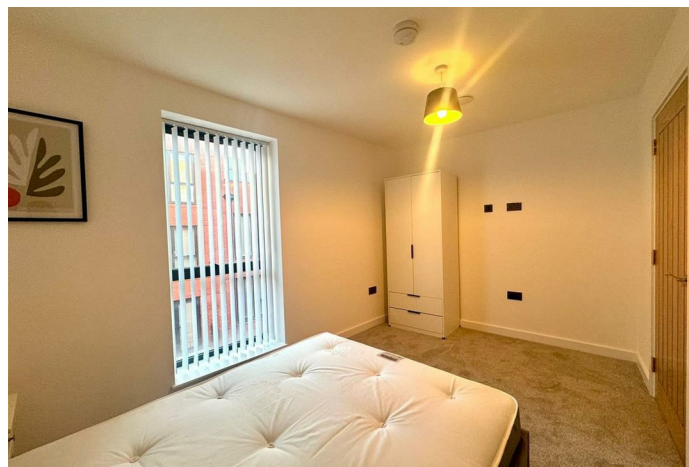
Description

Situation

Furnished

Council Tax Band: C

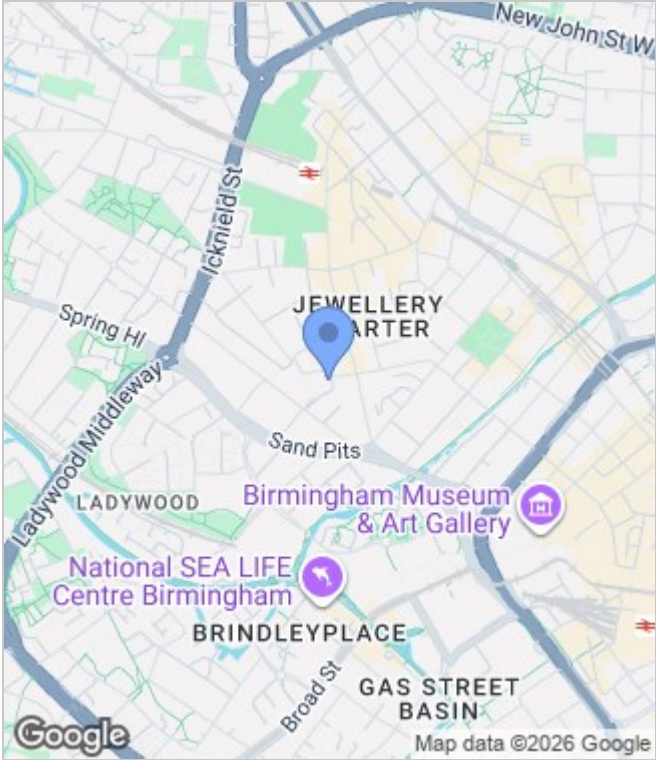
Available: 14th January 2026



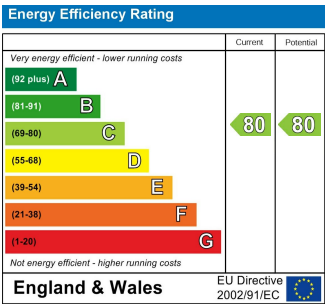
Floor Plans



Area Map



Energy Performance Graph



These particulars, whilst believed to be accurate are set out as a general outline only for guidance and do not constitute any part of an offer or contract. Intending purchasers should not rely on them as statements of representation of fact, but must satisfy themselves by inspection or otherwise as to their accuracy. No person in this firms employment has the authority to make or give any representation or warranty in respect of the property.