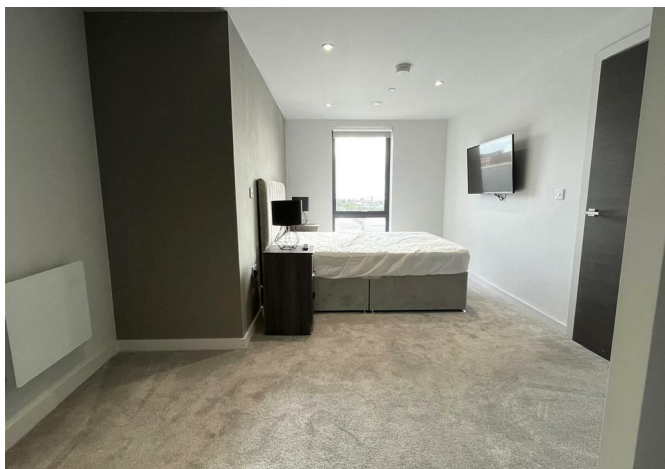




708 The Summit 12 Parliament Street, Liverpool, L8 5QX

£1,200 Per month



708 The Summit 12 Parliament Street, Liverpool, L8 5QX

£1,200 Per month

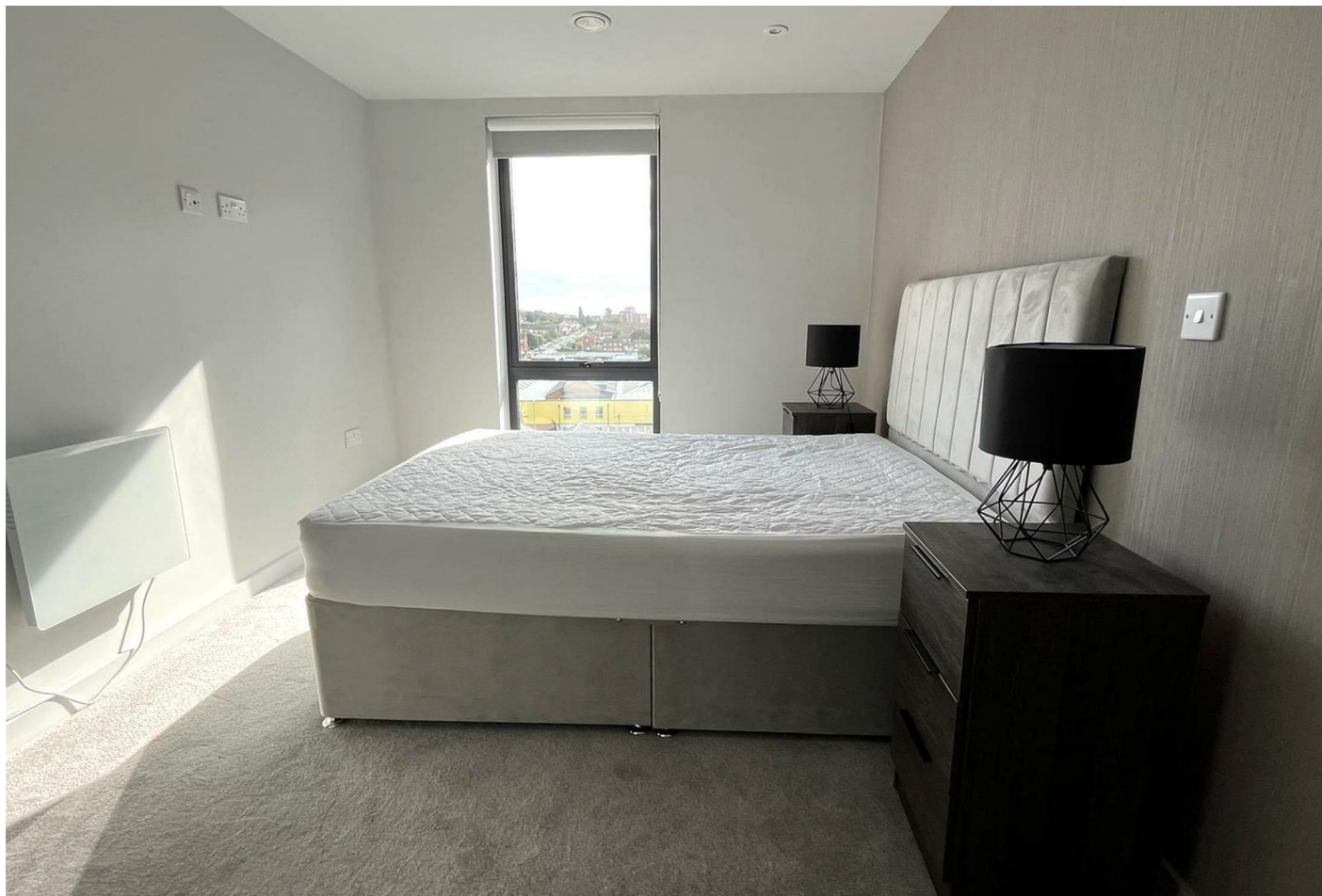
New to the market, this impressive two double bedroom furnished apartment is located on the seventh floor in the popular The Summit development.

The property benefits from a spacious open plan living room / dining area with floor to ceiling windows offering city views, and a stylish well equipped kitchen with integrated appliances. Off the living area are the two double bedrooms, the master benefiting from an ensuite shower room and there is a further family sized bathroom.

Residents of The Summit have access to an on site gymnasium and 24-hour concierge service, along with a passenger lift to all floors. The apartment also comes with an allocated parking space.

The Summit is located close to the water front, just a short walk from the Albert Dock and Liverpool city centre.

Description



Situation

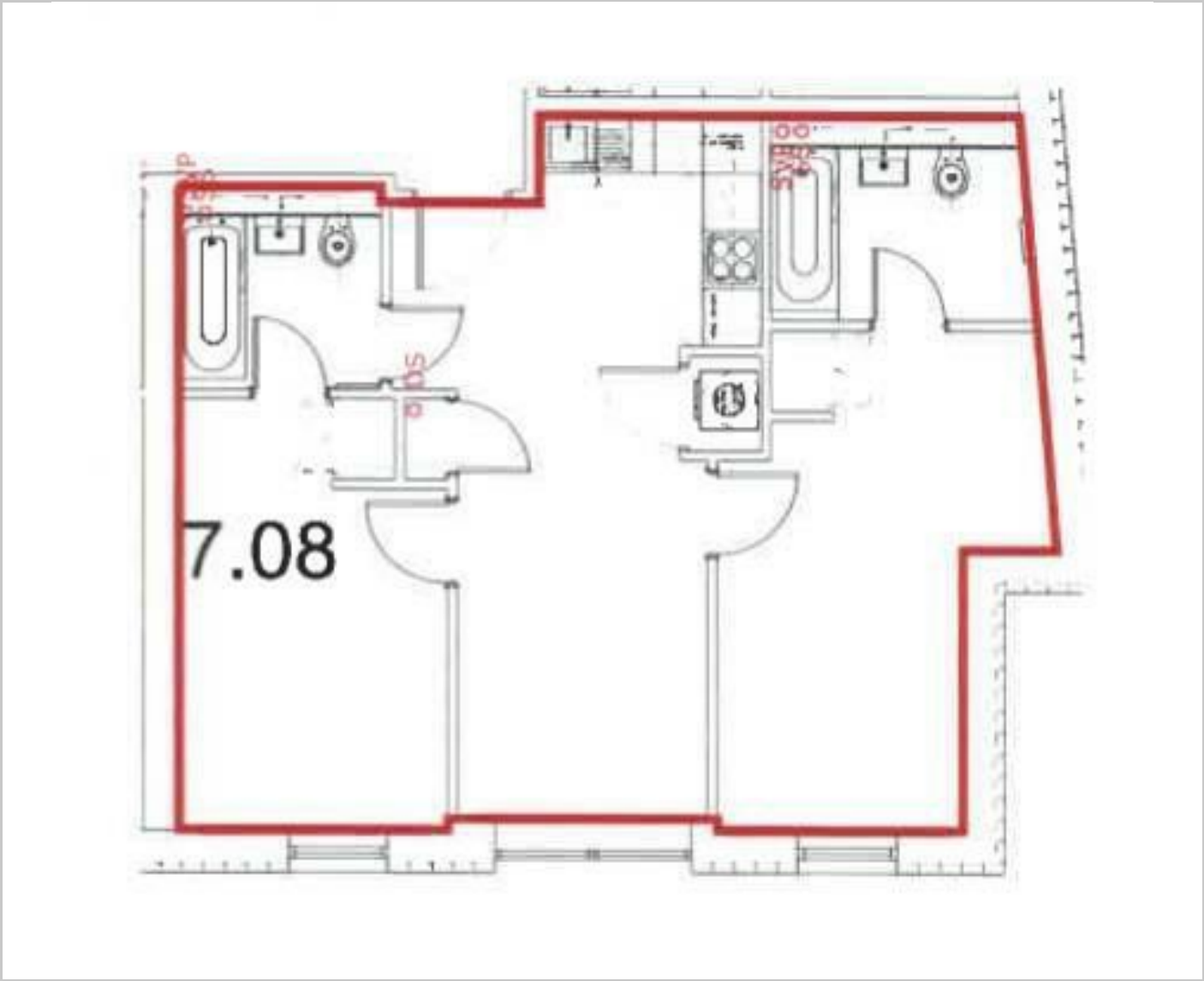


Furnished

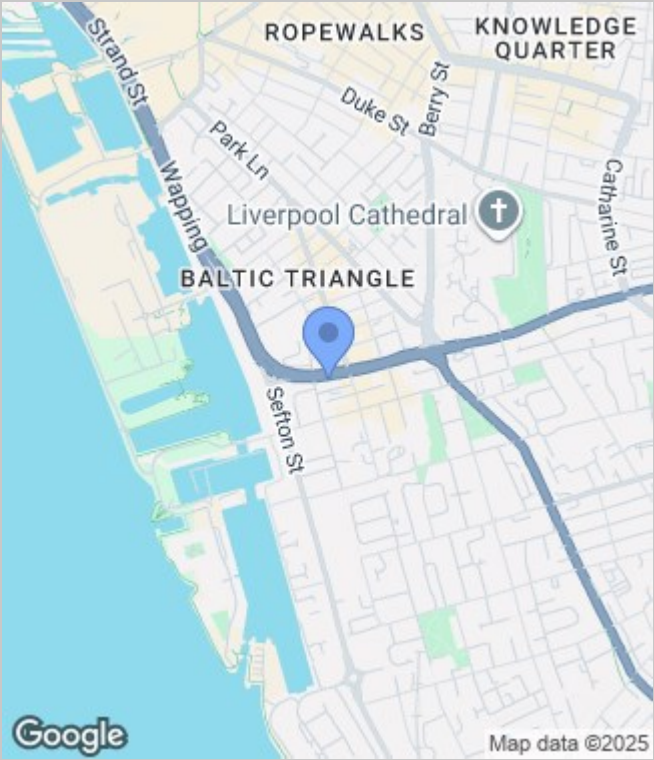
Council Tax Band: C

Available: 19th January 2026

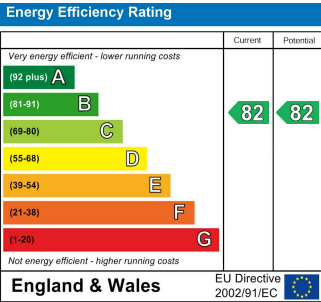
Floor Plans



Area Map



Energy Performance Graph



These particulars, whilst believed to be accurate are set out as a general outline only for guidance and do not constitute any part of an offer or contract. Intending purchasers should not rely on them as statements of representation of fact, but must satisfy themselves by inspection or otherwise as to their accuracy. No person in this firms employment has the authority to make or give any representation or warranty in respect of the property.