



Apartment 2 34-36 Victoria Road, Farnborough, GU14 7PQ
£1,350 Per month



Apartment 2 34-36 Victoria Road, Farnborough, GU14 7PQ

£1,350 Per month

New to the market, this stunning spacious one bedroom apartment is located in the newly built 'The Bank' development in Farnborough town centre.

The property benefits from an entrance hallway leading to a large open plan living area with wooden flooring, stylish grey kitchen with integrated appliances, large double bedroom, luxury bathroom with bath and shower, secure entry-phone access and contemporary design throughout.

The Bank is just a five minute walk from Farnborough mainline railway station and numerous local amenities including restaurants, a cinema and The Meads shopping centre.

Description

Situation

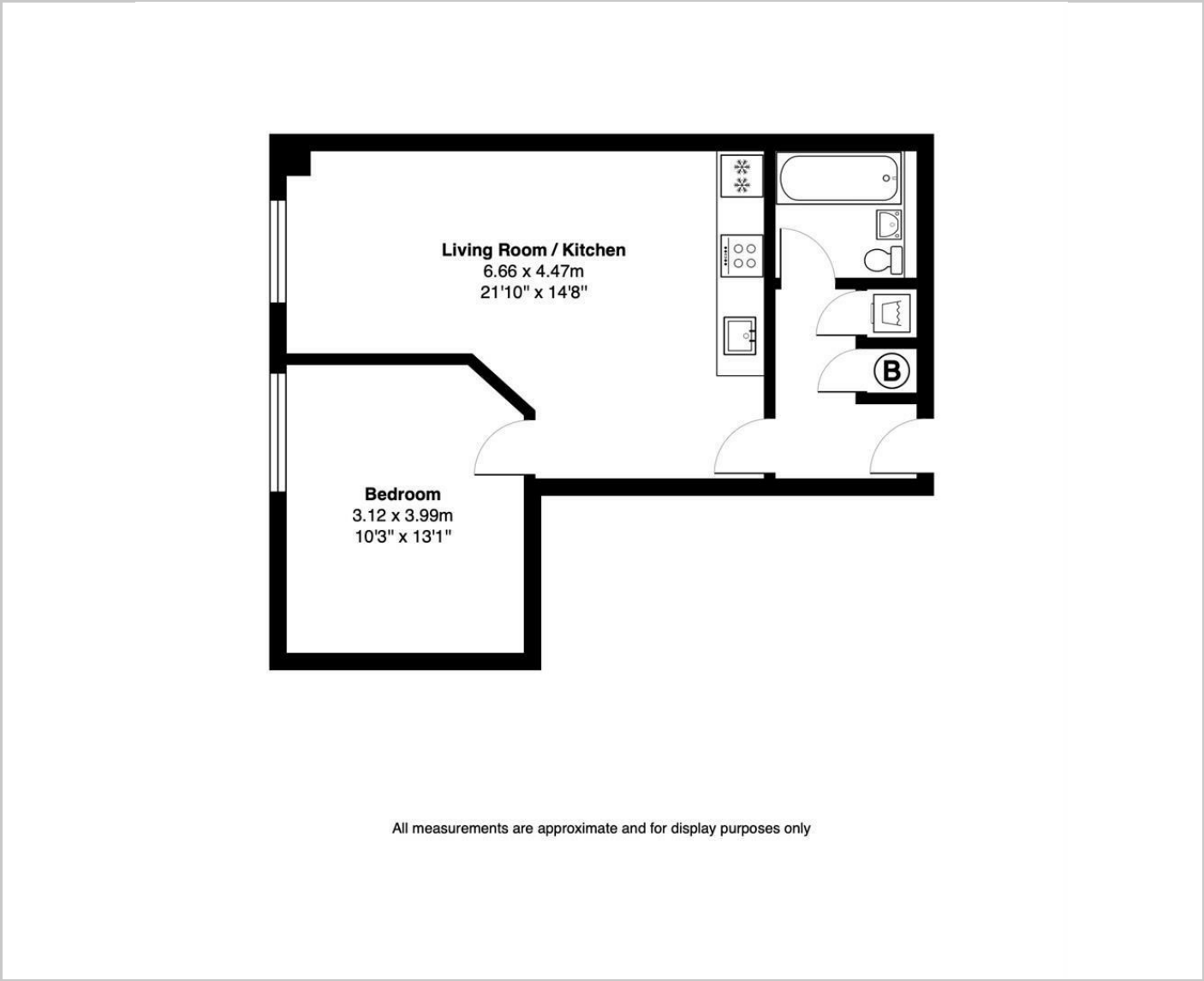
Unfurnished

Council Tax Band: New Build

Available: 16th June 2025



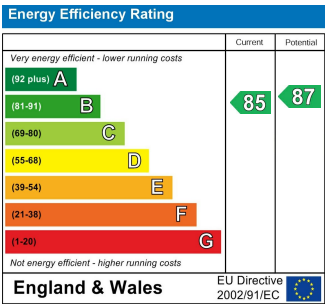
Floor Plans



Area Map



Energy Performance Graph



These particulars, whilst believed to be accurate are set out as a general outline only for guidance and do not constitute any part of an offer or contract. Intending purchasers should not rely on them as statements of representation of fact, but must satisfy themselves by inspection or otherwise as to their accuracy. No person in this firms employment has the authority to make or give any representation or warranty in respect of the property.