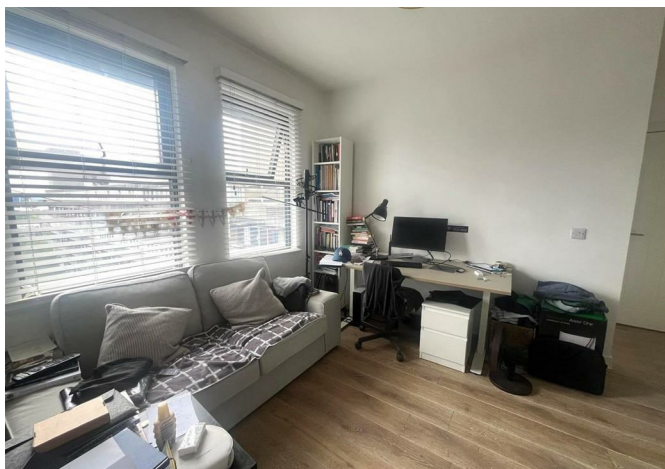
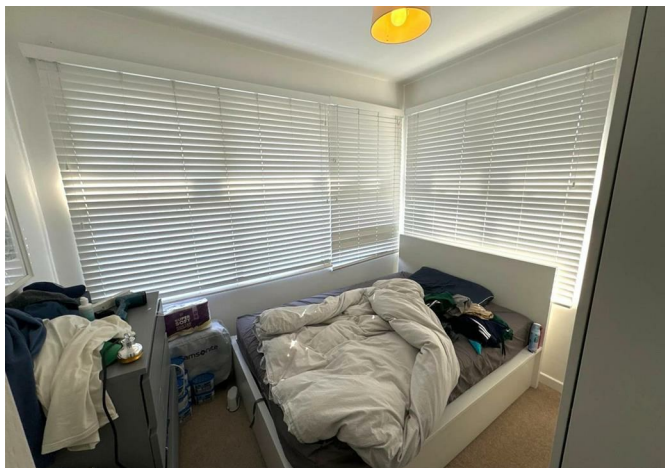




BRICK
MANAGEMENT + LETTINGS

19 Pilgrim House 22-26 Commercial Road, Southampton, Hampshire, SO15 1GE

£950



19 Pilgrim House 22-26 Commercial Road, Southampton, Hampshire, SO15 1GE

£950

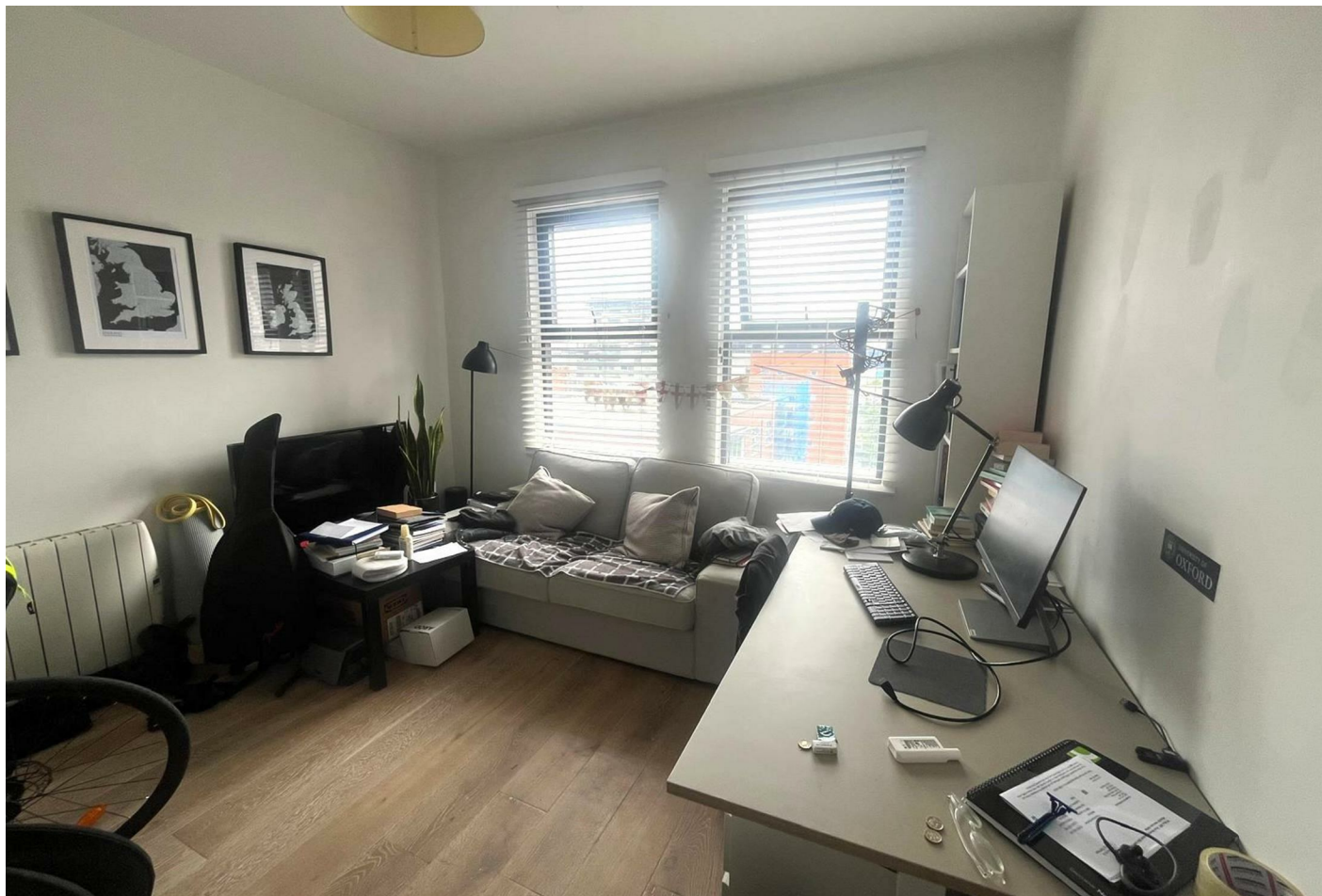
New to the market, this unfurnished, fourth floor one bedroom apartment is located in the popular Pilgrim House development.

The property benefits from an open plan living area with wooden effect flooring and far reaching views, modern white kitchen with appliances, double bedroom, luxury shower room, secure entry phone access and neutral decoration throughout.

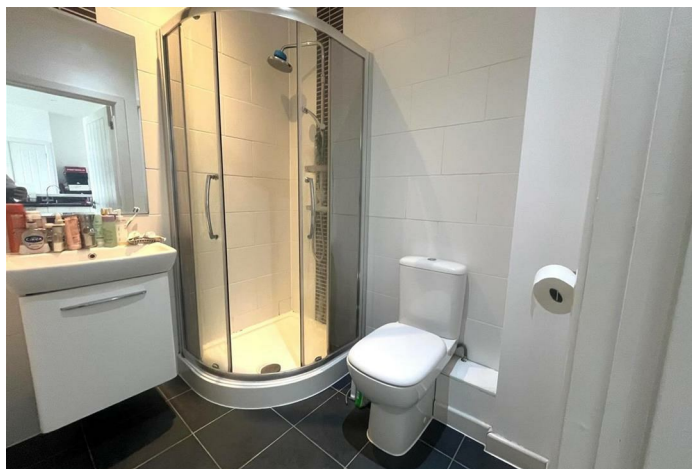
Pilgrim House is just a short walk from Southampton city centre, mainline station and the University.

* Sorry no allocated parking with this property *

Description



Situation

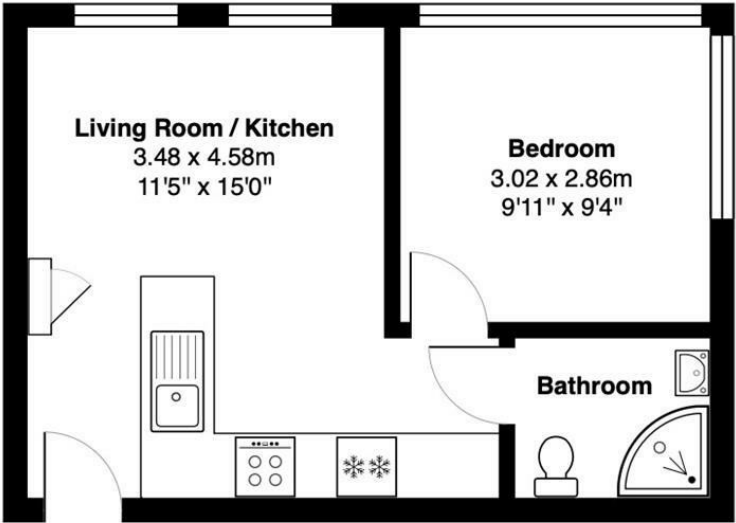


Unfurnished

Council Tax Band: A

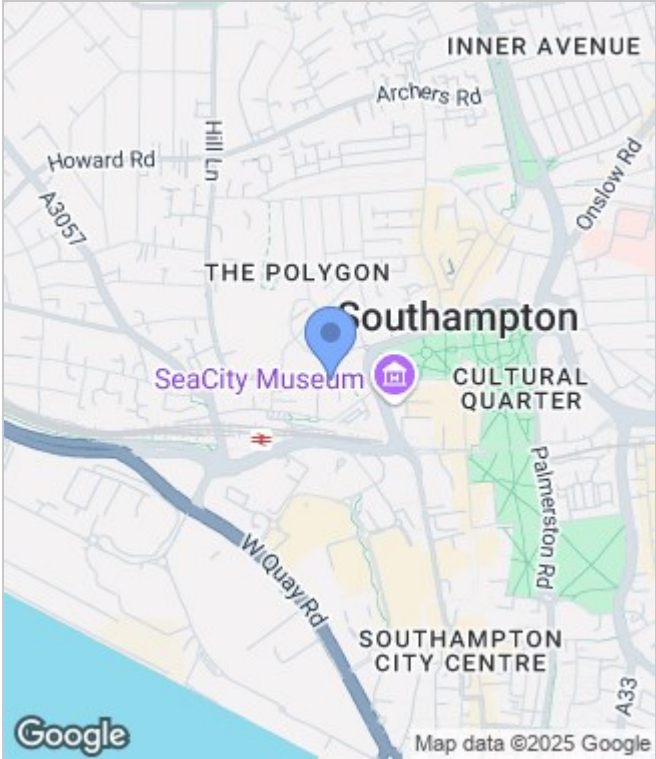
Available: 24th June 2025

Floor Plans

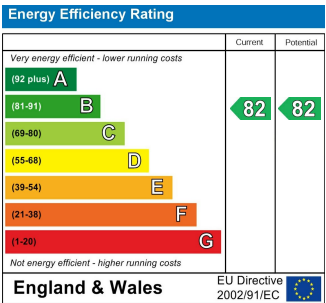


All measurements are approximate and for display purposes only

Area Map



Energy Performance Graph



These particulars, whilst believed to be accurate are set out as a general outline only for guidance and do not constitute any part of an offer or contract. Intending purchasers should not rely on them as statements of representation of fact, but must satisfy themselves by inspection or otherwise as to their accuracy. No person in this firms employment has the authority to make or give any representation or warranty in respect of the property.