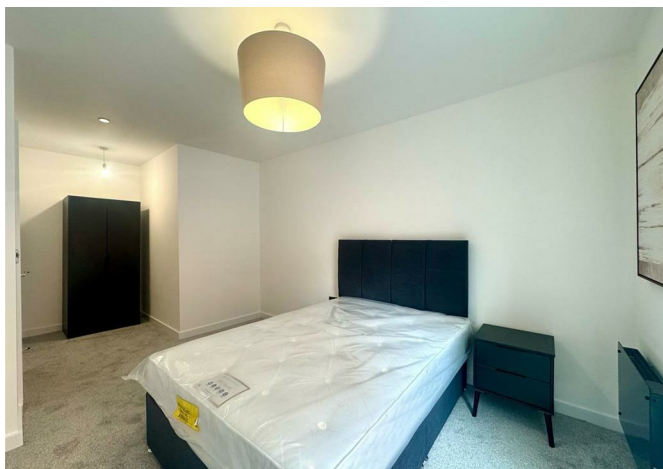


Apartment 17 23 Legge Lane, Birmingham, B1 3LX

£1,200 Per month





## Apartment 17 23 Legge Lane, Birmingham, B1 3LX

**£1,200 Per month**

New to the market, this impressive two double bedroom apartment is located on the ground floor of the brand new Scholars Quarter development in the heart of the Jewellery Quarter, just a short walk from Birmingham city centre and numerous local amenities.

The property benefits from an entrance hallway with ample storage, leading into a large open plan living / dining area with wooden flooring and internal courtyard views, stylish grey kitchen with integrated appliances, two large double bedrooms which are carpeted and a luxury bathroom with bath and shower.

Offered on a furnished basis, with video-entry phone access and neutral decoration throughout.

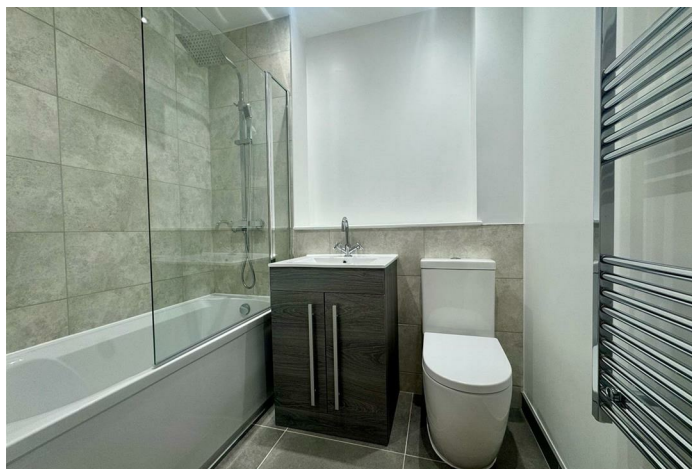
\* Sorry, no allocated parking with this property. \*



## Description



## Situation



Furnished

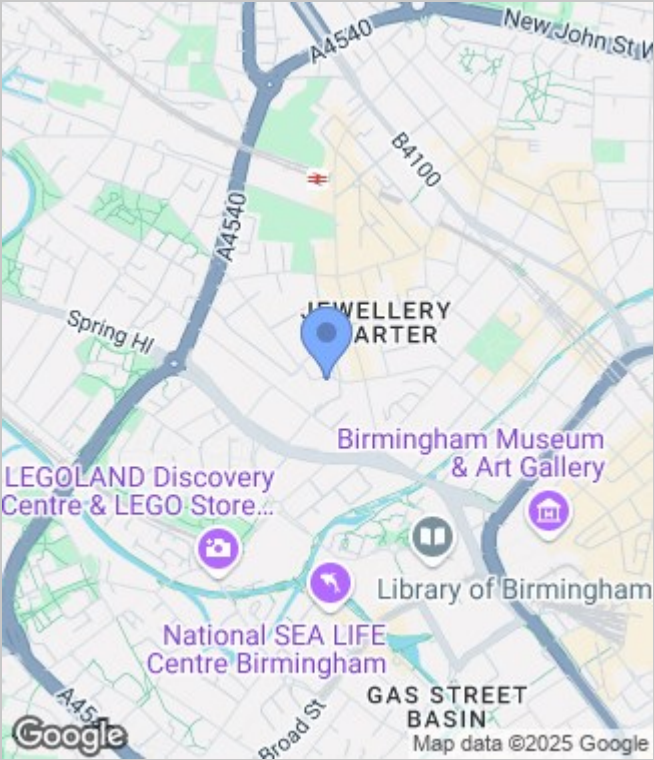
Council Tax Band: New Build

Available: 4th April 2025

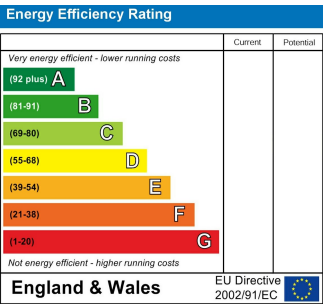
Floor Plans



Area Map



Energy Performance Graph



These particulars, whilst believed to be accurate are set out as a general outline only for guidance and do not constitute any part of an offer or contract. Intending purchasers should not rely on them as statements of representation of fact, but must satisfy themselves by inspection or otherwise as to their accuracy. No person in this firms employment has the authority to make or give any representation or warranty in respect of the property.