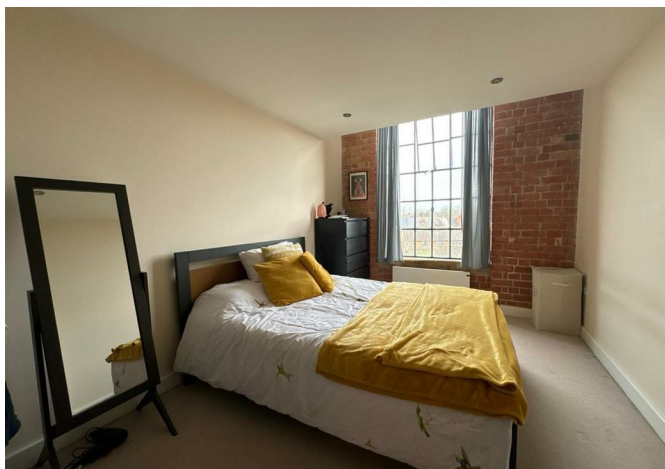




70 Victoria Mill Town End Road, Derby, DE72 3PW

£120,000





70 Victoria Mill Town End Road, Derby, DE72 3PW

£120,000

Great Investment Opportunity! / Ideal for first time buyers!

New to the market, this spacious one bedroom apartment is located in the popular Victoria Mill development.

The apartment itself benefits from an entrance hallway leading to an open plan living area with large windows offering lots of natural light, modern kitchen with integrated appliances, a large double bedroom, modern bathroom with bath and shower, neutral decoration throughout and secure entry-phone access.

The property has character features such as exposed brickwork and piping and access to the apartment can be gained by the original stone communal staircase or the lift.

Residents can park one vehicle on site.

Victoria Mill is just a few minutes walk from local amenities, plus a short drive from Derby city centre and the M1.

## Description

## Situation



null

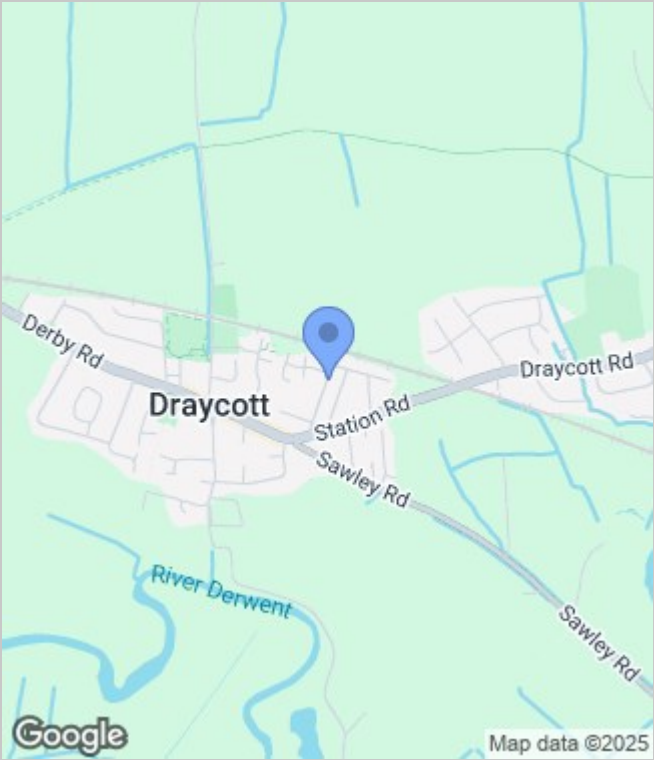
Council Tax Band: A

Available:

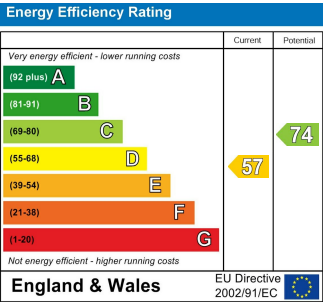
Floor Plans



Area Map



Energy Performance Graph



These particulars, whilst believed to be accurate are set out as a general outline only for guidance and do not constitute any part of an offer or contract. Intending purchasers should not rely on them as statements of representation of fact, but must satisfy themselves by inspection or otherwise as to their accuracy. No person in this firms employment has the authority to make or give any representation or warranty in respect of the property.