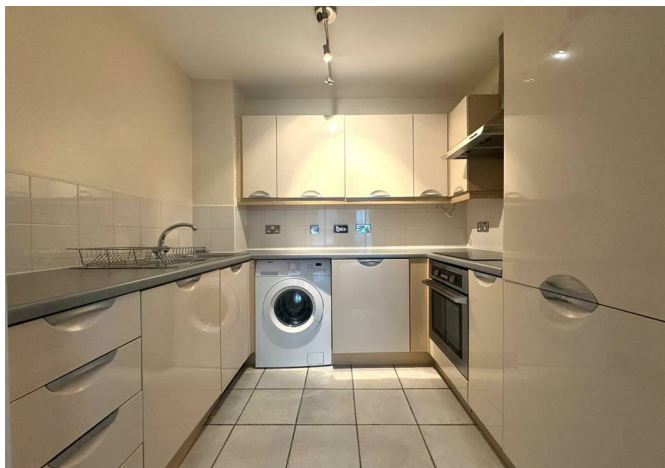




58 Bath Row, Birmingham, B15 2DG

£169,500



58 Bath Row, Birmingham, B15 2DG

£169,500

Great Investment Opportunity / Ideal First Home!!

Brick are delighted to offer to the market this impressive ground floor two double bedroom apartment, located in the popular Park Central development.

The property benefits from a long hallway with ample storage leading to a large open plan living / dining area with access to its own private patio, modern white kitchen with integrated appliances, master bedroom with en-suite bathroom, second double bedroom and a further family sized bathroom.

With neutral decoration throughout, the property also comes with a secure allocated parking space.

Bath Row just a short walk from Birmingham City Centre and Birmingham New Street station.

129 years remaining of the 150 lease.

Description

Situation

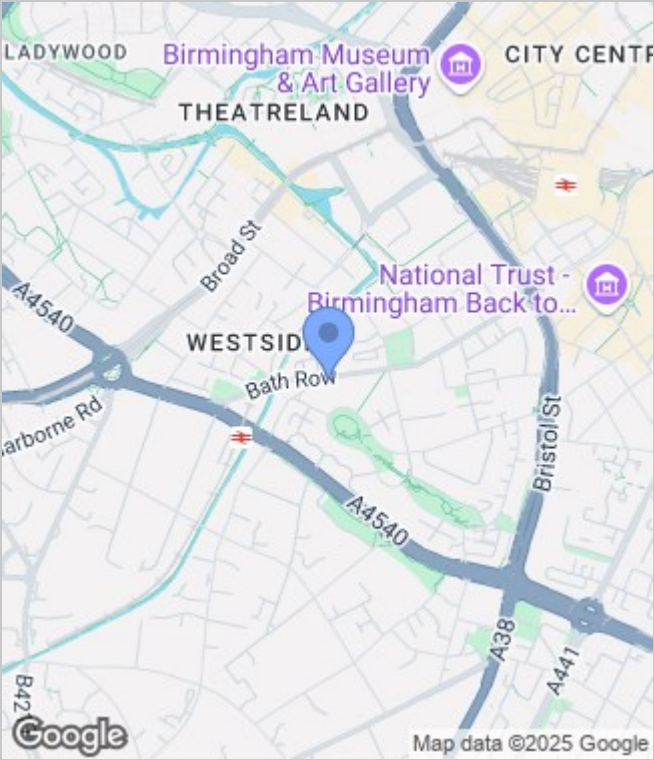
null
Council Tax Band: B
Available:



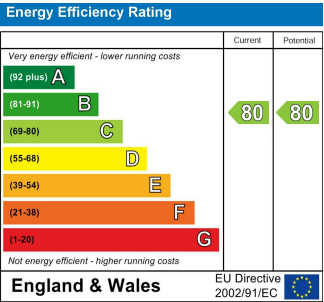
Floor Plans



Area Map



Energy Performance Graph



These particulars, whilst believed to be accurate are set out as a general outline only for guidance and do not constitute any part of an offer or contract. Intending purchasers should not rely on them as statements of representation of fact, but must satisfy themselves by inspection or otherwise as to their accuracy. No person in this firms employment has the authority to make or give any representation or warranty in respect of the property.