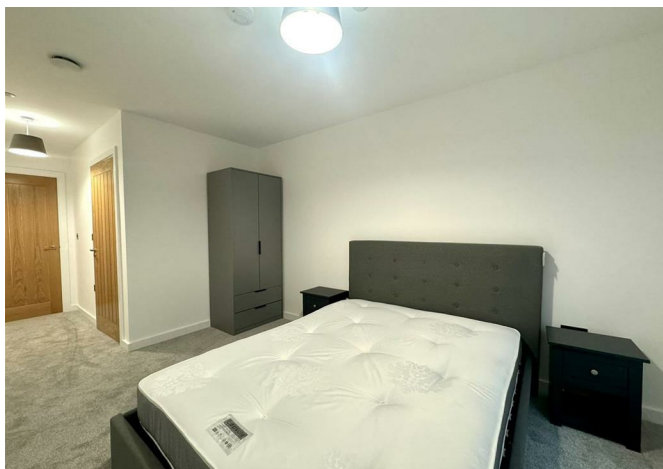




Apartment 5 24 Legge Lane, Birmingham, B1 3LS

£1,250 Per month





## Apartment 5 24 Legge Lane, Birmingham, B1 3LS

**£1,250 Per month**

New to the market, this impressive two double bedroom, two bathroom apartment is located on the first floor of the brand new Scholars Quarter development in the heart of the Jewellery Quarter, just a short walk from Birmingham city centre and numerous local amenities.

The property benefits from a large entrance hallway with ample storage, leading into a very naturally light open plan living room / dining area with wooden flooring, stylish grey kitchen with integrated appliances and floor to ceiling windows offering city views. Also off the hallway are two double bedrooms which are both carpeted, the master benefits from an ensuite shower room and there is also a further family sized bathroom.

Offered on a furnished basis, with video-entry phone access and neutral decoration throughout.

\* Sorry, no allocated parking with this property. \*



## Description



## Situation

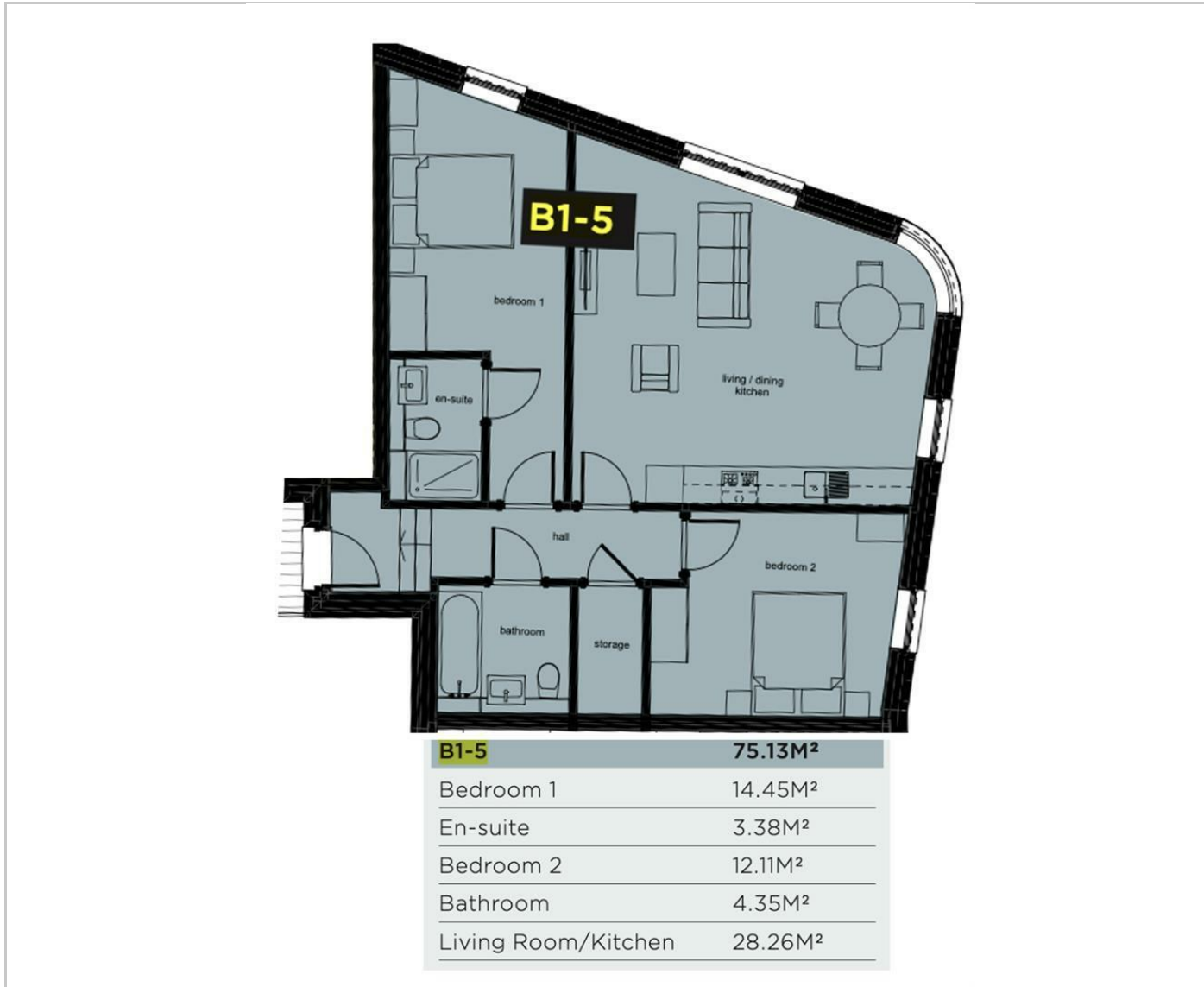


Furnished

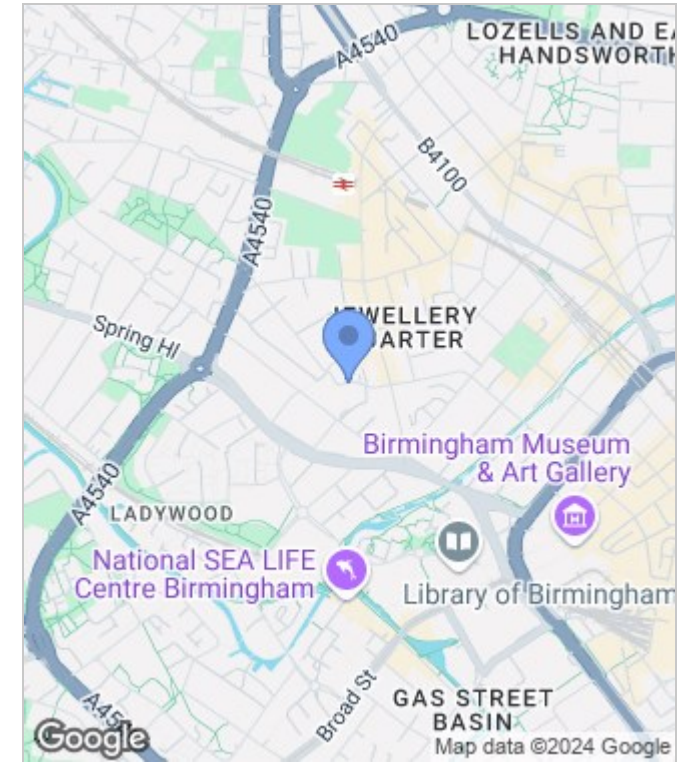
Council Tax Band: New Build

Available: 6th September 2024

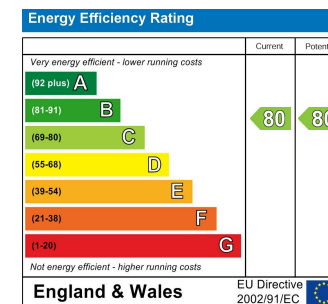
## Floor Plans



## Area Map



## Energy Performance Graph



These particulars, whilst believed to be accurate are set out as a general outline only for guidance and do not constitute any part of an offer or contract. Intending purchasers should not rely on them as statements of representation of fact, but must satisfy themselves by inspection or otherwise as to their accuracy. No person in this firm's employment has the authority to make or give any representation or warranty in respect of the property.