



Brook Farm, Rickford Road, Worplesdon, Guildford, Surrey, GU33PJ

£3,650 Per month



Brook Farm, Rickford Road, Worplesdon, Guildford, Surrey, GU33PJ

£3,650 Per month

New to the market, this stunning four bedroom detached family home is located in the sought after rural area of Worplesdon on the outskirts of Guildford in Surrey.

Internally the property benefits from a long entrance hallway with storage leading to a ground floor large living room with wood burning fireplace, large dining / play room, long galley style kitchen with appliances, utility / shower room, breakfast room and a large conservatory to the rear. Then on the upper floor you have a landing area leading to three large double bedrooms with fitted double wardrobes, a luxury en-suite bathroom, a fourth double bedroom and a family bathroom with a free standing bath.

Externally the property has a large private wrap around garden, long decked patio with stunning unobstructed views across the meadows to the rear, shed storage and driveway parking for up to four vehicles.

Both Guildford and Woking town centres and train stations are only a ten minute drive away. There is a regular bus service into Guildford from outside the property, plus local amenities including the Fox public house and Christmas bakery opposite.

Description



Situation

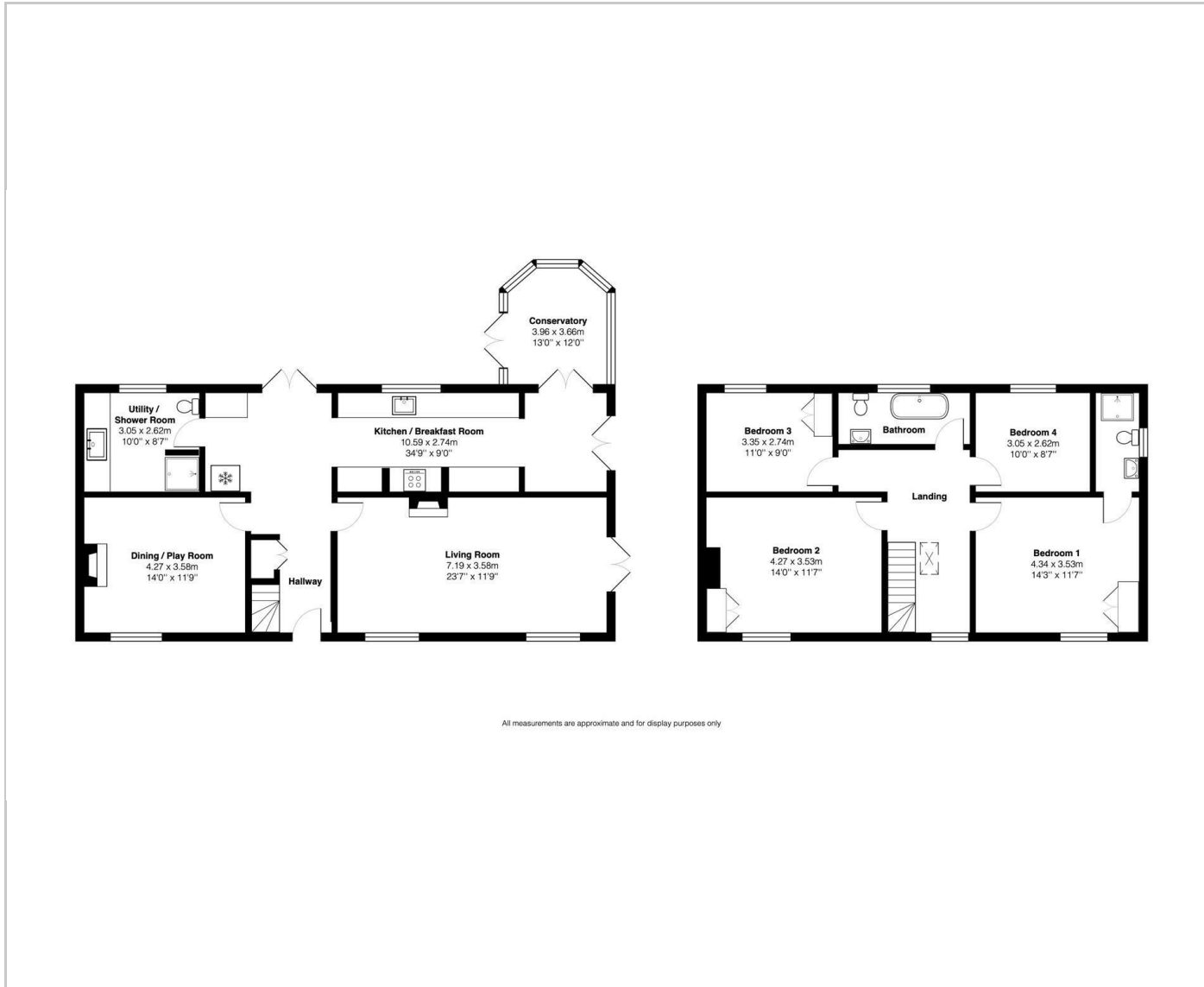


Unfurnished

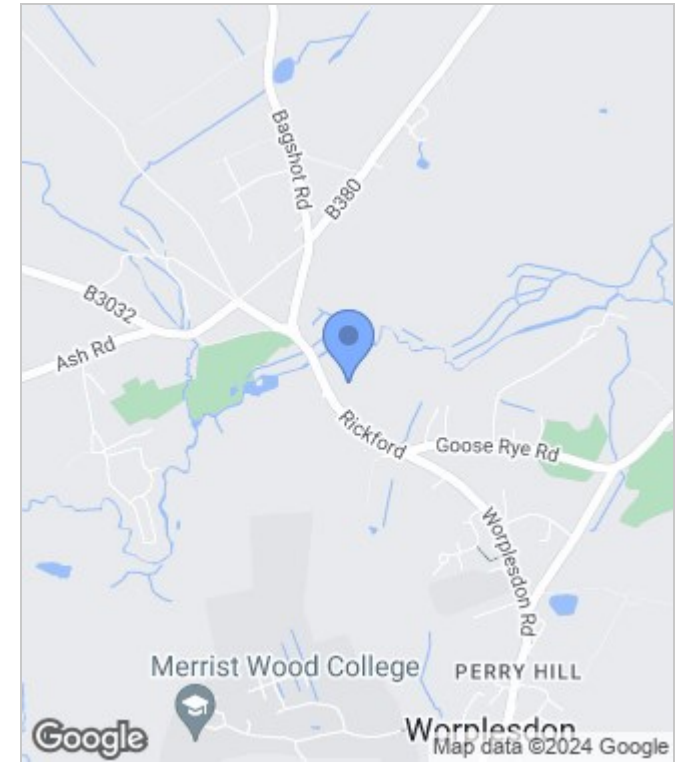
Council Tax Band: F

Available: 19th August 2024

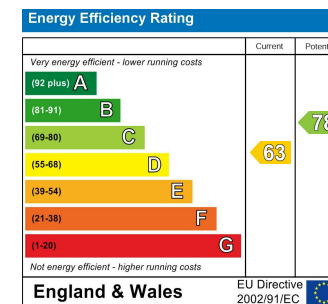
Floor Plans



Area Map



Energy Performance Graph



These particulars, whilst believed to be accurate are set out as a general outline only for guidance and do not constitute any part of an offer or contract. Intending purchasers should not rely on them as statements of representation of fact, but must satisfy themselves by inspection or otherwise as to their accuracy. No person in this firm's employment has the authority to make or give any representation or warranty in respect of the property.