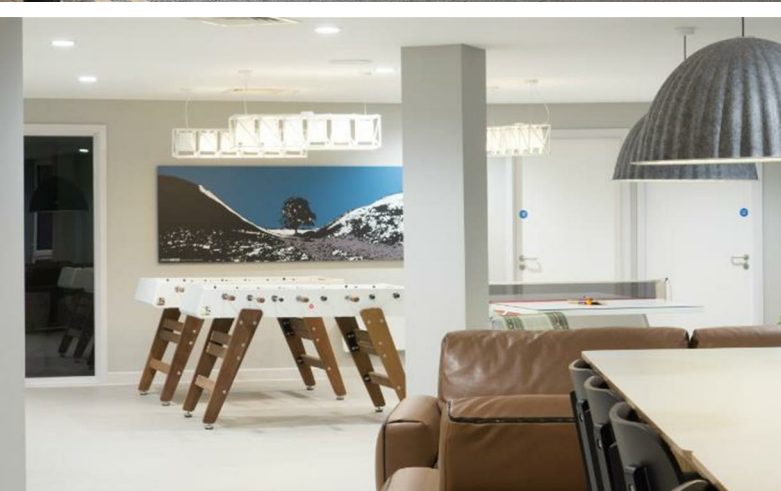




In partnership with

URBAN STUDY



£180 Per week

324, Urban Study Melbourne Pandon Bank, Newcastle, NE1 2JF

## 324, Urban Study Melbourne Pandon Bank, Newcastle, NE1 2JF

Modern and contemporary standard studio at Urban Study Melbourne ALL BILLS INCLUSIVE (ex. Council Tax, Band A) in Newcastle City Centre. Perfect for working professionals and students this studio has a galley kitchen perfect for cooking (oven, electric hob, extractor fan, microwave and fridge/freezer), en suite shower room, desk space – ideal for working from home or studying and great storage solutions for studio living.

Superfast broadband with access for up to six devices, water and electricity bills are all included in rent as well as the building's resident-only facilities including: Sky Sports in the cinema room, private dining/meeting room, games area, gym, secure bike storage and smart laundry facilities (additional charges for laundry apply).

Secure carded entry to building, 24/7 CCTV around the building and a friendly front of house team and day concierge to store parcels and deliveries securely.

Gated, secure off-street parking is available at an additional £20 a week.

### Credit References and Deposit

Prospective tenants will be required to complete a credit referencing application payable whether successful or not. Prior to taking occupation of the property you will be required to pay a deposit of 1½ times the monthly rent, the first months rent in advance and an administration fee.

### Directions

Energy Efficiency Rating		Current	Planned
Very energy efficient - lower running costs			
92-100	A		
81-91	B		
69-80	C		
55-68	D		
39-54	E		
21-38	F		
1-20	G		
Not energy efficient - higher running costs			
England & Wales		EU Directive 2002/91/EC	