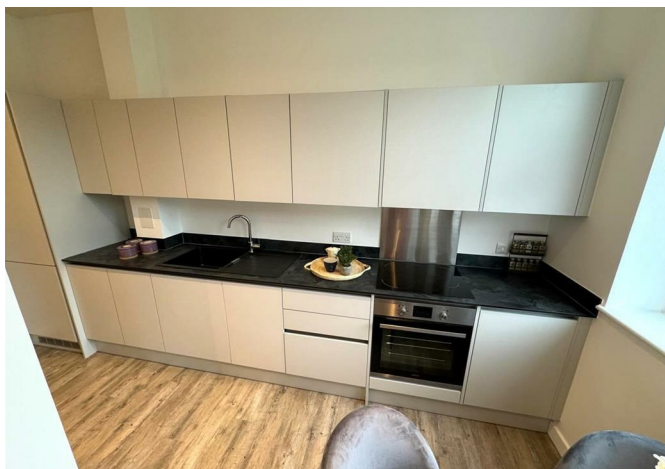




28 Wraysbury House 4-16 London Road, Staines-Upon-Thames, London, TW18 4BP

£268,000



28 Wraysbury House 4-16 London Road, Staines-Upon-Thames, London, TW18 4BP

£268,000

GREAT FOR FIRST TIME BUYERS / INVESTMENT OPPORTUNITY!...

New to the market, this well presented, spacious one bedroom first floor apartment is located in the popular Wraysbury House development, close to Staines town centre.

The apartment is finished to a high specification and designed around a neutral, modern and minimalist palette. The accommodation consists of a hallway leading to a large open plan living area with wood effect flooring and high ceiling, stylish fully integrated grey kitchen and separate utility cupboard with washer / dryer, double bedroom with fitted double mirrored wardrobe, luxury bathroom suite with shower cubicle, neutral decoration throughout and secure entry-phone system.

The property is sold with one parking space in the secure gated car park, located below the development.

Wraysbury house is just a short walk from Staines town centre and the mainline railway station. The M25, with access to Heathrow airport is just a five minute drive away.

250 year lease, with 247 years remaining.

Description



Situation

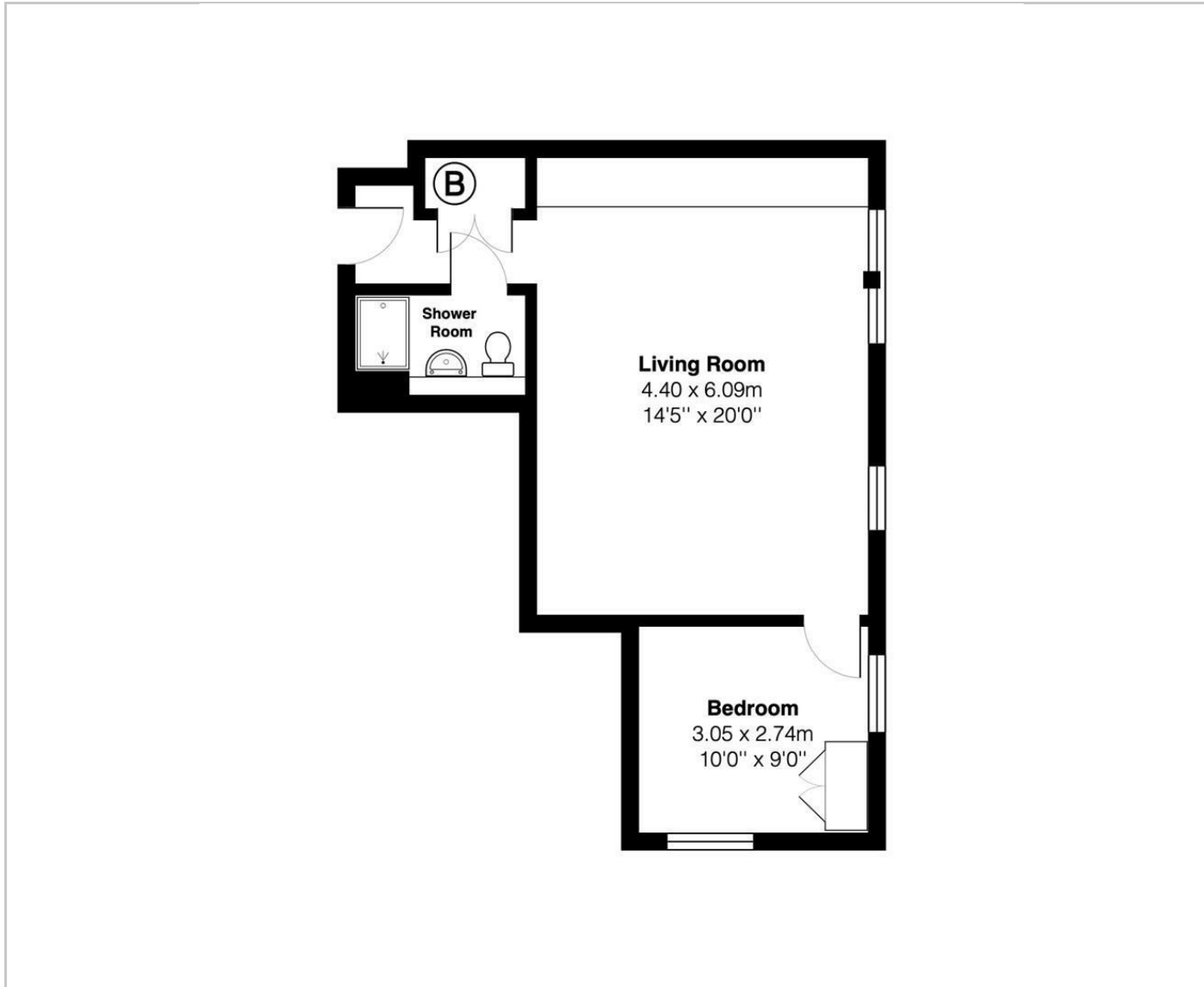


null

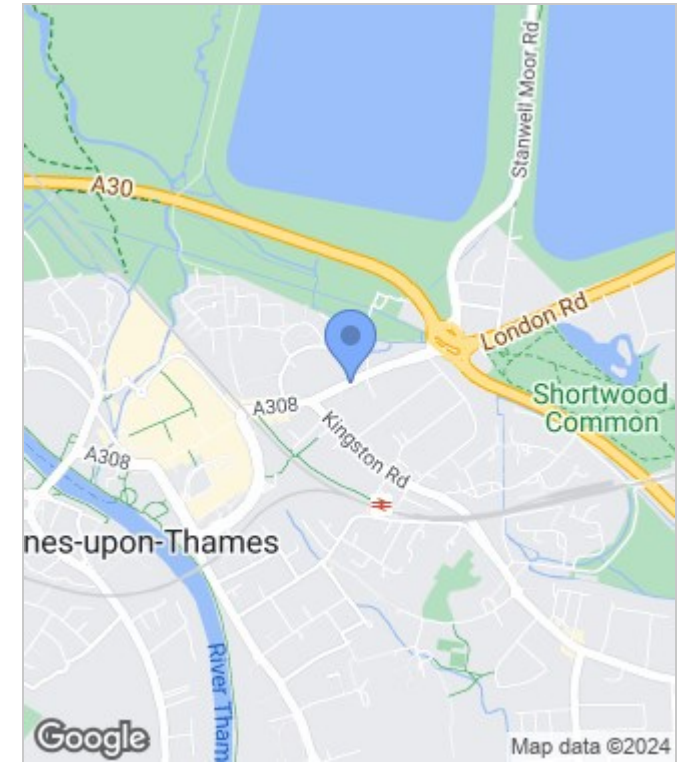
Council Tax Band: C

Available:

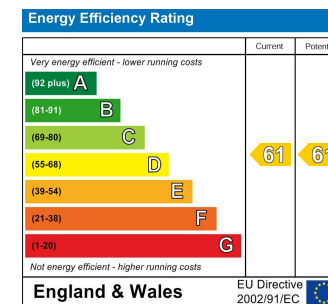
Floor Plans



Area Map



Energy Performance Graph



These particulars, whilst believed to be accurate are set out as a general outline only for guidance and do not constitute any part of an offer or contract. Intending purchasers should not rely on them as statements of representation of fact, but must satisfy themselves by inspection or otherwise as to their accuracy. No person in this firm's employment has the authority to make or give any representation or warranty in respect of the property.