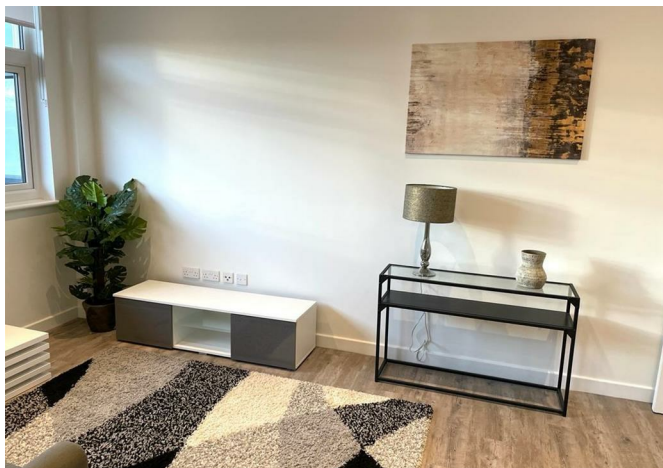




48 Wraysbury House 4-16 London Road, Staines-Upon-Thames, London, TW18 4BP

£375,000



48 Wraysbury House 4-16 London Road, Staines-Upon-Thames, London, TW18 4BP

£375,000

GREAT INVESTMENT OPPORTUNITY!!..

New to the market, this impressive, spacious split level two bedroom apartment is located in the popular Wraysbury House development.

The apartment is finished to a high specification and designed around a modern, neutral palette. The accommodation consists of a small entrance hall leading to a large open plan living area with wood effect flooring, stylish fully integrated kitchen and separate utility cupboard, stairwell leading to upper floor with two double bedrooms, two luxury en-suite bathrooms with shower, wall mounted electric heating and secure entry-phone system.

The property is sold with one parking space in the secure gated underground car park.

The apartment is sold with tenant in situ, so immediate income upon completion.

Wraysbury house is just a short walk from Staines town centre and the mainline railway station. The M25, with access to Heathrow airport is just a 5 minute drive away.

250 year lease, with 247 years remaining.

Description



Situation

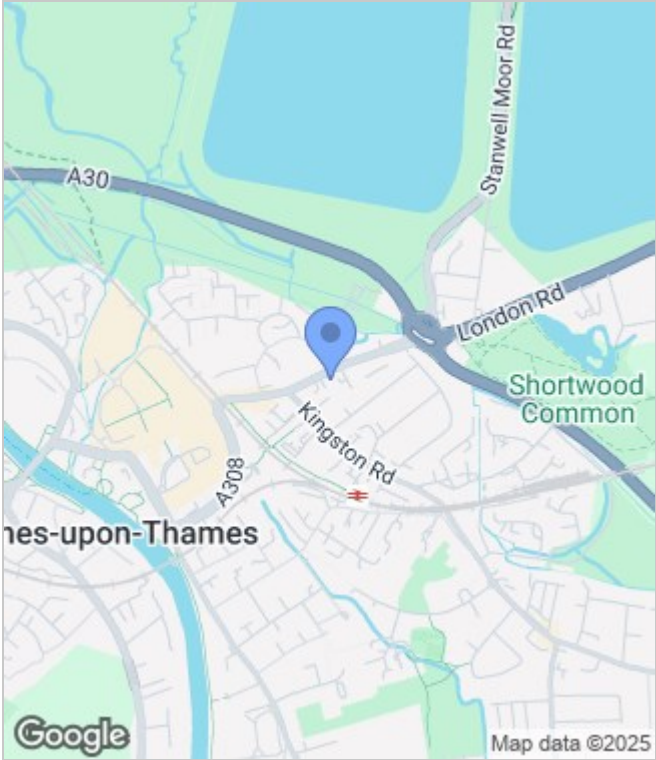


null
Council Tax Band: C
Available:

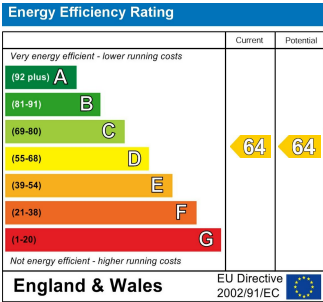
Floor Plans



Area Map



Energy Performance Graph



These particulars, whilst believed to be accurate are set out as a general outline only for guidance and do not constitute any part of an offer or contract. Intending purchasers should not rely on them as statements of representation of fact, but must satisfy themselves by inspection or otherwise as to their accuracy. No person in this firms employment has the authority to make or give any representation or warranty in respect of the property.