



HUNTERS[®]

HERE TO GET *you* THERE

Bay View Terrace, Penzance | Guide Price £315,000
Call us today on 01736 800919



Thinking of Selling?

If you are thinking of selling your home or just curious to discover the value of your property, Hunters would be pleased to provide free, no obligation sales and marketing advice. Even if your home is outside the area covered by our local offices we can arrange a Market Appraisal through our national network of Hunters estate agents.

Hunters Estate Agents are delighted to have been chosen as the sole selling agent, for this beautifully presented Victorian mid-terrace home. Inside, you'll find a deceptively spacious two-bedroom layout that perhaps rivals the square footage of some three-bedroom properties, with lighted-filled rooms and a welcoming, airy atmosphere throughout. Lovingly presented and full of character, it has a delightful blend of period charm and modern comfort. The enclosed rear courtyard provides a lovely outdoor space, benefitting from a good degree of shelter and privacy. So, the house gets a big nod of approval, as does the outdoor space... but what about the location? Well, if 'location' was an Olympic sport - then this property just took the gold medal. Penzance's iconic promenade, the pretty Morrab Gardens, the town centre amenities, and St Mary's school, are all within walking distance of this fabulous home. And we almost forgot to mention, there are even distant sea glimpses from the sitting room and primary bedroom! Please get in touch to arrange your viewing today - we'd be delighted to give you the full tour of this property!

The Property

They say you only have one chance, at making a first impression. Luckily for this property, it makes a fantastic one - with its well-maintained front courtyard, a striking new composite front door framed by decorative corbels, elegant box sash-style windows, and a wide bay window that adds to its charm.

Step inside to a welcoming entrance vestibule, followed by a door with stunning stained glass panels that open into the inner hallway. Sliding doors lead you into the spacious open-plan lounge and dining area, a fantastic family space that seamlessly connects to the courtyard garden through newly installed doors—ideal for both relaxing and entertaining on warm summer days. The dual-aspect room, with its large bay window, offers the perfect setting for dining, entertaining, and unwinding. Did you know this property is a mere 200 meters or so from the sea as the crow flies? Step into the bay window area, turn to your left, and you'll catch some distant sea glimpses. Not only are you close to the ocean, but you can enjoy a little peek at it too! Adjacent to the dining area is the kitchen, which provides ample cabinet and work surface space. Beyond the kitchen, you'll find a highly convenient utility room and a ground-floor WC, adding both practicality and convenience to this beautifully designed home.

It is estimated that there are 5 to 7 billion bedrooms worldwide, and two of the finest can be found right here on the first floor of this home. Both are generously sized double bedrooms, with the primary bedroom at the front benefiting from exceptional natural light, thanks to its dual windows. In the primary bedroom if you step into the bay window area, turn left, again you will enjoy some distant sea glimpses - just fab! Additionally, there is a well-appointed first-floor bathroom and a convenient built-in closet off the hallway.

The Outside

In such a convenient area of Penzance, with easy walking access to all the town's amenities, it's a rare treat to find a home with a charming courtyard garden. This outdoor space offers a distinct advantage over similar properties that may lack private outside areas. Enclosed and sheltered, the courtyard is a delightful spot, complete with a gate leading onto the back lane. Both the dining area and utility room open directly onto this space, enhancing its accessibility. An outdoor tap with hot water adds an extra touch of convenience—perfect for everything from a peaceful morning coffee to lively gatherings with friends and family.

Further Potential?

The lovely owners of this property inform us that a number of the other houses on this street have converted their attic space into a good size bedroom or office area. This could perhaps be ideal for a family with plans to grow in the future, or somebody wanting an extra room for guests or hobbies. Please do your own due-diligence on suitability, any works would be subject to gaining necessary permissions and consents.

HAVE A LOCAL PROPERTY TO SELL OR LET?

If you are looking to sell or let a property in the local area, please get in touch! We'll be more than happy to pop out and see you, for a free, no-obligation valuation and chat :)

The Location

Do you want to know more about Penzance?

A Port Town with Proper Charm...

In the late 1700s this Cornish town became a haven for pirates, smugglers, and other bandits, who used the town's harbour and nearby coves, as a base of operations. One hundred years later, the town would become indelibly linked in the public's

consciousness, to this romanticized time period, when Gilbert and Sullivan released their famous comedic opera, "The Pirates of Penzance". The premiere screening of which, took place at the Fifth Avenue Theatre in New York City, and made its London debut a year later.

You may be relieved to hear, that when you visit modern day Penzance, you are unlikely to encounter roaming buccaneers, galleons and gunpowder. You are, however, very likely to encounter warm hospitality, ornate architecture, picturesque scenery, and an abundance of local activities to enjoy.

You might be surprised at the strength of the links Penzance also has to more modern popular culture.

For example, the town was the childhood hometown of Primetime Emmy Award winning actress Thandiwe Newton OBE, who recently played a starring role in America's hit TV show 'West World'. Penzance was also the childhood home to famous actor Sam Palladio, well known for his role in ABC's stateside soap opera 'Nashville'.

Useful Information

Services: Mains Gas, Electricity, Water & Drainage
Council Tax Band: B
EPC Rating: 60D



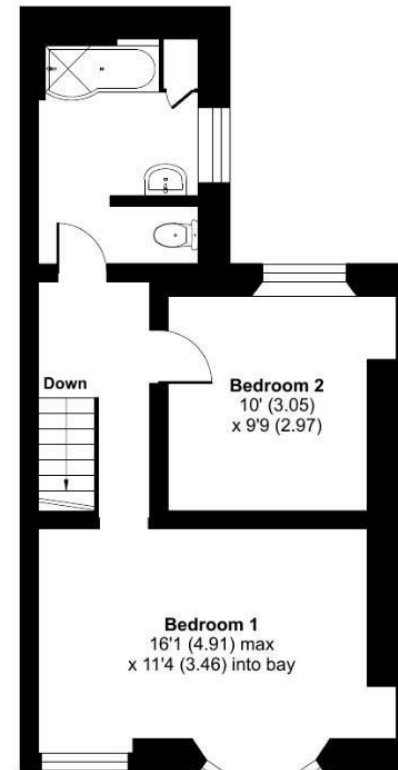
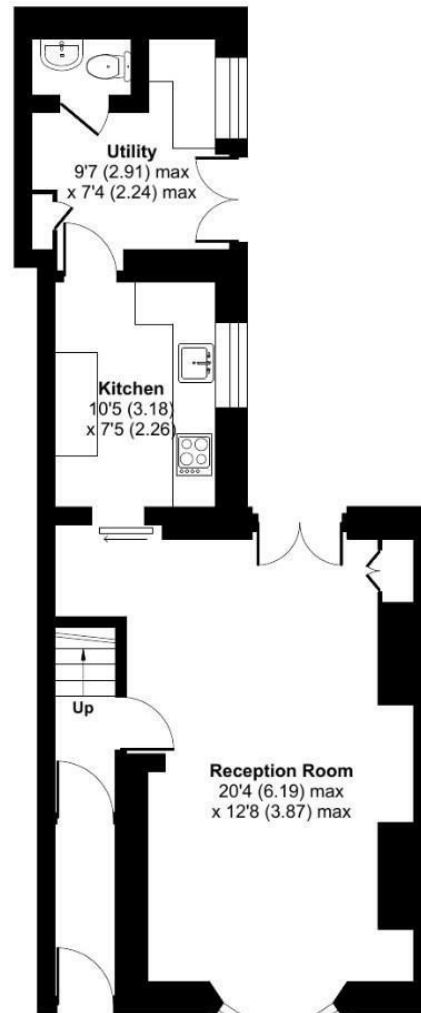




Bay View Terrace, Penzance, TR18

Approximate Area = 971 sq ft / 90.2 sq m

For identification only - Not to scale



 Floor plan produced in accordance with RICS Property Measurement 2nd Edition, Incorporating International Property Measurement Standards (IPMS2 Residential). © nitchecom 2024. Produced for Hunters. REF: 1201744

These particulars are intended to give a fair and reliable description of the property but no responsibility for any inaccuracy or error can be accepted and do not constitute an offer or contract. We have not tested any services or appliances (including central heating if fitted) referred to in these particulars and the purchasers are advised to satisfy themselves as to the working order and condition. If a property is unoccupied at any time there may be reconnection charges for any switched off/disconnected or drained services or appliances - All measurements are approximate.

Apollo House Eboracum Way, York, YO32 7RE | 01736 800919
| westcornwall@hunters.com

HUNTERS[®]
HERE TO GET *you* THERE