

ANWYL
thoughtful homes

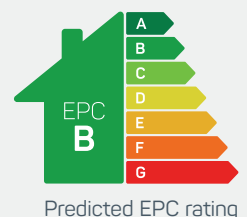


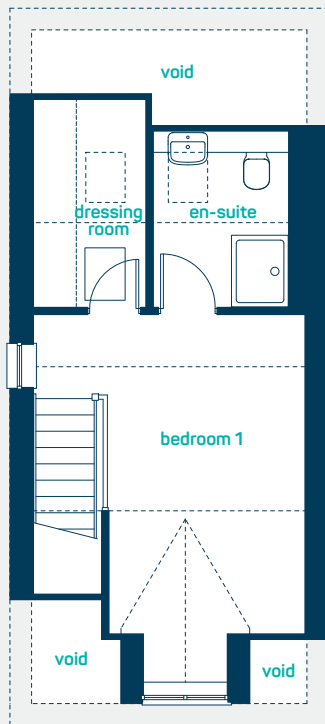
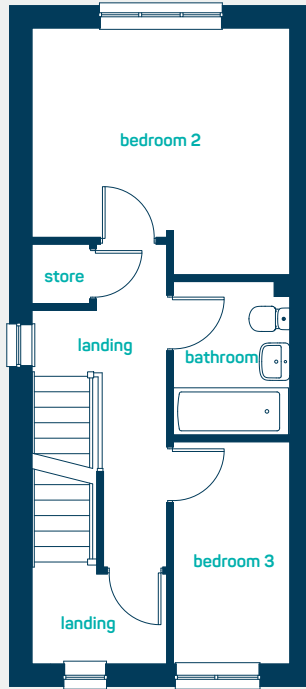
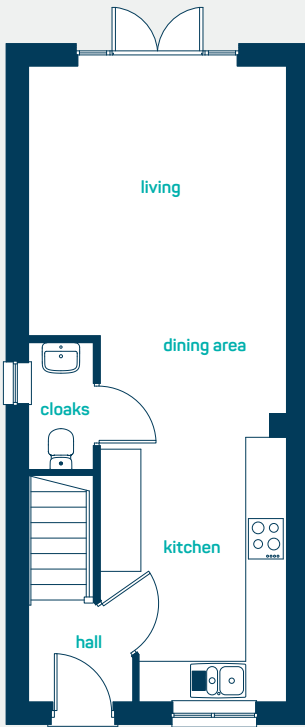
the snowdon

3 bed semi-detached

A 2.5 storey 3 bedroom semi-detached home. Key features include *open plan* kitchen, living and dining room with French doors to the rear, 3 bedrooms including master bedroom with en-suite, *dressing room* and separate family bathroom.

www.anwylhomes.co.uk





modern
open plan living

ground floor

kitchen/
dining/living 30'9" x 12'6"
cloaks 6'3" x 3'0"

kitchen/
dining/living 9.37m x 3.80m
cloaks 1.90m x 0.91m

first floor

bedroom 2 12'6" x 11'10"
bedroom 3 10'9" x 5'8"
bathroom 7'5" x 5'8"

bedroom 2 3.80m x 3.61m
bedroom 3 3.27m x 1.72m
bathroom 2.26m x 1.72m

second floor

bedroom 1 (inc dorma) 17'0" x 12'6"
dressing room 9'8" x 5'2"
en-suite 9'1" x 6'3"

bedroom 1 (inc dorma) 5.18m x 3.80m
dressing room 2.94m x 1.58m
en-suite 2.77m x 1.90m

the snowdon
3 bed semi-detached

ANWYL
thoughtful homes

**NEW
HOMES
QUALITY
CODE**

**NEW HOMES
OMBUDSMAN
SERVICE**

www.anwylhomes.co.uk

Anwyl Homes is a Registered Developer with the NHQB. This is a computer-generated image of the snowdon, elevation treatment may vary. Room sizes are approximate, dimensions are taken from the longest room point (please consult homes advisor for measurement points). Plots may be handed and any garages may be single or double. Kitchen and bathroom layouts are indicative. These plans are correct at the time of going to press, but may be subject to change during construction. Please ensure that you check for specific plot details. 01/11/22.

everything considered.