

GWYNN
FOUR
BEDROOM
HOME

BLOOR HOMES



A four bedroom detached home comprising a spacious lounge with a feature bay window and an impressive open plan kitchen / dining / family room including a separate utility room and French doors leading to the rear garden. A study and cloakroom complete this floor. Upstairs is home to the family bathroom with separate bath and shower cubicle, plus four generous sized bedrooms, the master bedroom benefits from fitted wardrobes and an en suite shower room.

GWYNN

A STUNNING FOUR BEDROOM
DETACHED HOME

GWYNN
 FOUR
 BEDROOM
 HOME

FIRST FLOOR:

BEDROOM 1
 3.28m x 3.27m
 10'9" x 10'9"

EN SUITE

BEDROOM 2
 3.80m x 3.27m
 12'6" x 10'9"

BEDROOM 3
 3.95m x 2.74m
 12'11" x 9'0"

BEDROOM 4
 3.86m x 2.40m
 12'8" x 7'10"

BATHROOM

GROUND FLOOR:

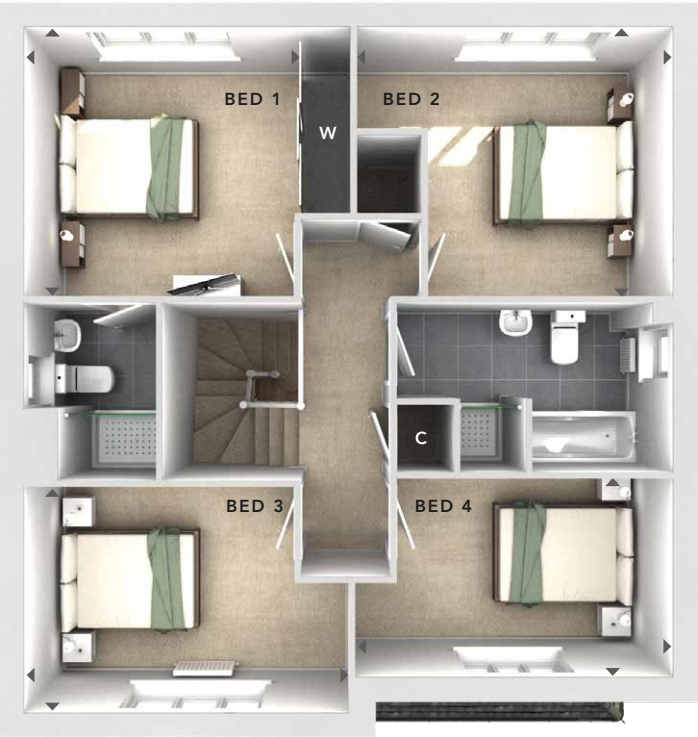
LOUNGE
 3.33m x 4.55m
 10'11" x 14'11"

KITCHEN / DINING / FAMILY
 7.88m x 3.19m
 25'10" x 10'6"

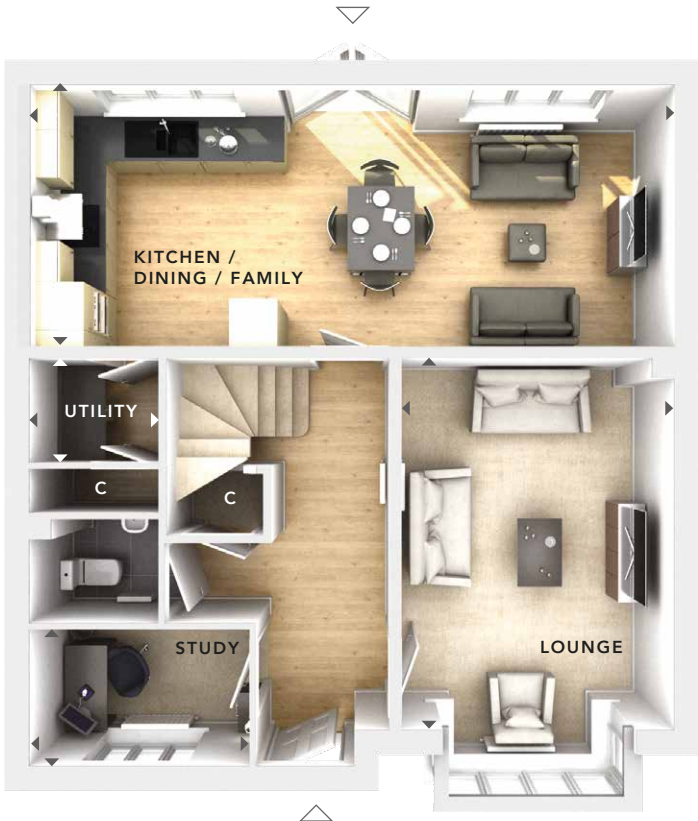
UTILITY
 1.57m x 1.28m
 5'2" x 4'3"

STUDY
 2.69m x 1.66m
 8'10" x 5'5"

CLOAKS



FIRST FLOOR



GROUND FLOOR

W	- Fitted Wardrobes
C	- Storage
△	- External Access
◄ ►	- Measurement Points
489 NSS BRICK LONG MEL	



These particulars are intended as a preliminary guide for prospective purchasers and should not be relied upon. The elevational treatment for individual house types shows a typical arrangement. Details of materials and design treatments may vary. Any artist impressions shown are not intended to represent any particular plot. Purchasers are advised to inspect the layout plan to establish the arrangement of the house and surrounding property. Internal layouts show a general arrangement which may vary from plot to plot. Room sizes given are approx. overall finished room sizes and subject to normal building tolerances (i.e. ± 75mm). In all instances purchasers are advised to inspect plot specific information available from our sales team. Nothing in these particulars or verbal assurance shall form or constitute part of any contract, and are given without any responsibility on behalf of Bloor Homes.