

**WOTNER  
THREE / FOUR  
BEDROOM  
HOME**

**BLOOR HOMES**



A three / four bedroom detached home comprising a spacious lounge with French doors leading to the garden and fantastic open plan kitchen / dining area featuring a separate utility. Upstairs there are three bedrooms with the master benefitting from fitted wardrobes and an en suite shower room. The study can also be used as a fourth bedroom.

**WOTNER**

**AN IMPRESSIVE THREE / FOUR  
BEDROOM FAMILY HOME**

**WOTNER  
THREE / FOUR  
BEDROOM  
HOME**

**FIRST FLOOR:**

**BEDROOM 1**  
3.55m x 2.82m  
11'8" x 9'3"

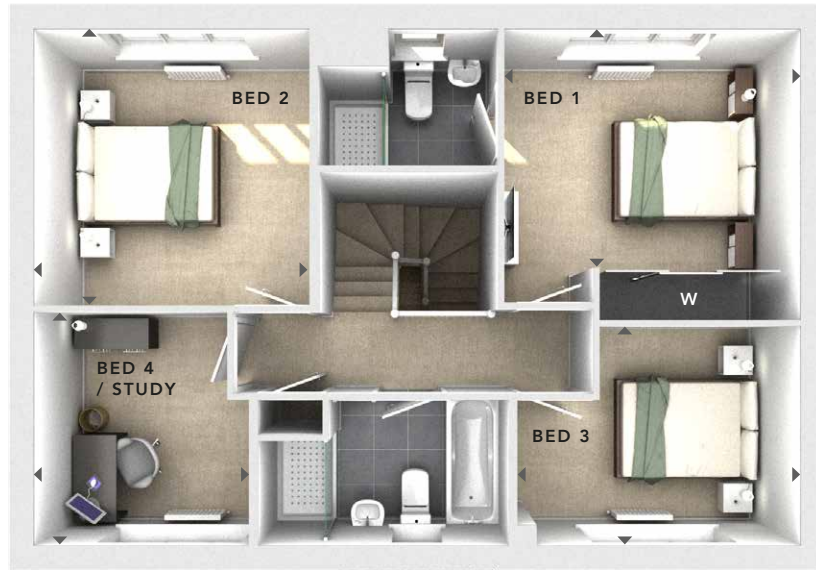
**EN SUITE**

**BEDROOM 2**  
3.29m x 3.31m  
10'9" x 10'10"

**BEDROOM 3**  
3.38m x 2.63m  
11'1" x 8'8"

**BEDROOM 4 / STUDY**  
2.57m x 2.79m  
8'5" x 9'2"

**BATHROOM**



**FIRST  
FLOOR**

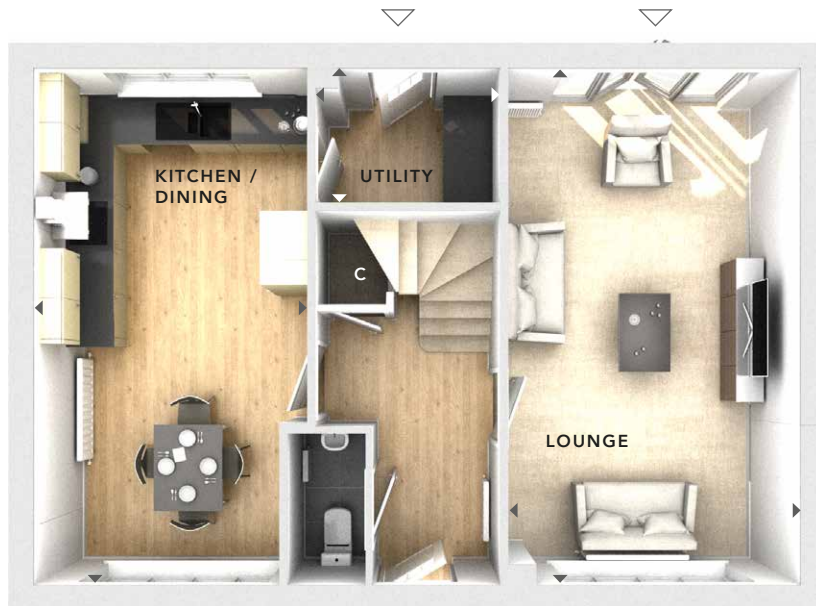
**GROUND FLOOR:**

**LOUNGE**  
3.47m x 6.18m  
11'5" x 20'3"

**KITCHEN / DINING**  
3.25m x 6.18m  
10'8" x 20'3"

**UTILITY**  
2.18m x 1.60m  
7'2" x 5'3"

**CLOAKS**



**GROUND  
FLOOR**

- W - Fitted Wardrobes
- C - Storage
- △ - External Access
- ◀ ▶ - Measurement Points

© Bloor Homes • 475B 4.3

**BLOOR HOMES**

These particulars are intended as a preliminary guide for prospective purchasers and should not be relied upon. The elevational treatment for individual house types shows a typical arrangement. Details of materials and design treatments may vary. Any artist impressions shown are not intended to represent any particular plot. Purchasers are advised to inspect the layout plan to establish the arrangement of the house and surrounding property. Internal layouts show a general arrangement which may vary from plot to plot. Room sizes given are approx. overall finished room sizes and subject to normal building tolerances (ie ± 75mm). In all instances purchasers are advised to inspect plot specific information available from our sales team. Nothing in these particulars or verbal assurance shall form or constitute part of any contract, and are given without any responsibility on behalf of Bloor Homes.