

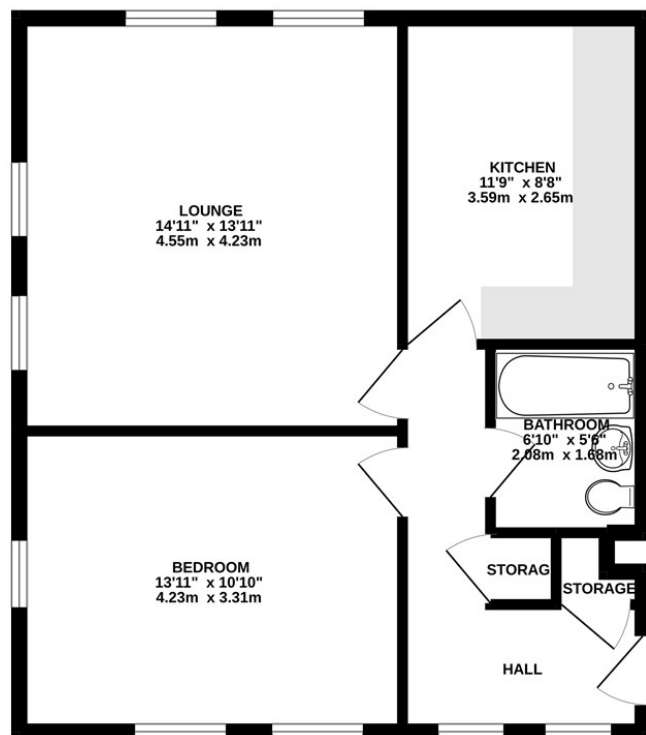
EDEN MIDCALF
— SALES & LETTINGS —

PCM

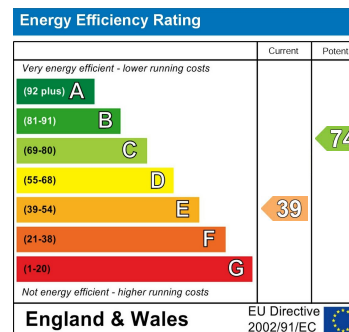
£695 PCM
Furlong Lane

Halesowen, B63 2TH

GROUND FLOOR
581 sq.ft. (53.9 sq.m.) approx.



TOTAL FLOOR AREA: 581 sq.ft. (53.9 sq.m.) approx.
Whilst every attempt has been made to ensure the accuracy of the floorplan contained here, measurements of doors, windows, rooms and any other items are approximate and no responsibility is taken for any error, omission or mis-statement. This plan is for illustrative purposes only and should be used as such by any prospective purchaser. The services, systems and appliances shown have not been tested and no guarantee as to their operability or efficiency can be given.
Made with Metropix ©2022



Agents Note: Whilst every care has been taken to prepare these particulars, they are for guidance purposes only. All measurements are approximate and are for general guidance purposes only and whilst every care has been taken to ensure their accuracy, they should not be relied upon and potential buyers/tenants are advised to recheck

EDEN MIDCALF
— SALES & LETTINGS —

42 Hagley Road
Stourbridge
West Midlands
DY8 1QD

01384 443434
lettings@edenmidcalf.co.uk
<https://www.edenmidcalf.co.uk/us/>