

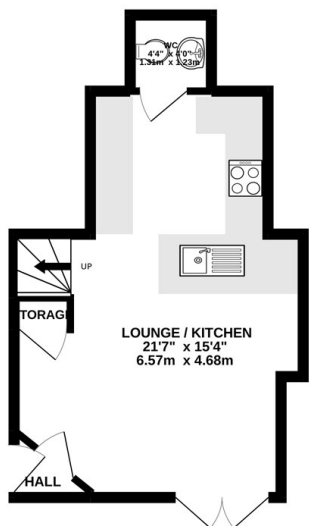
EDEN MIDCALF  
— SALES & LETTINGS —

PCM

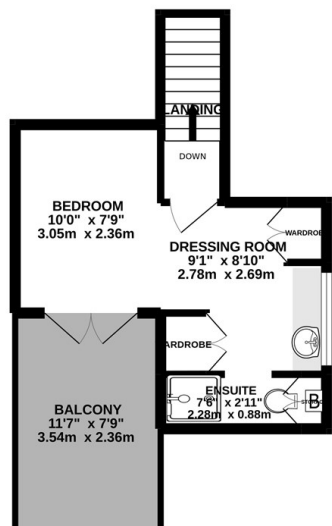
£1,200 PCM  
Stourton Court  
Stourton, DY7 5BQ



GROUND FLOOR  
296 sq.ft. (27.5 sq.m.) approx.

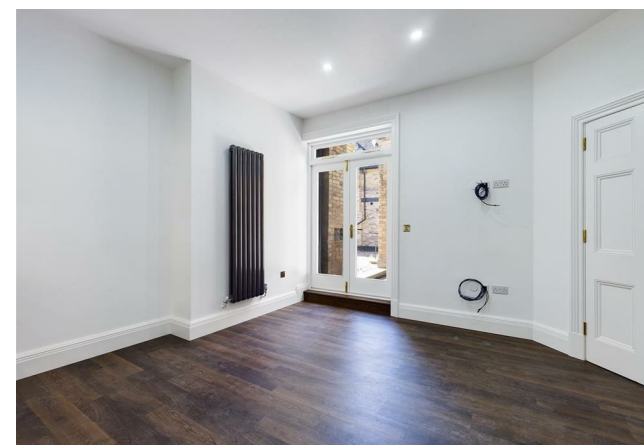
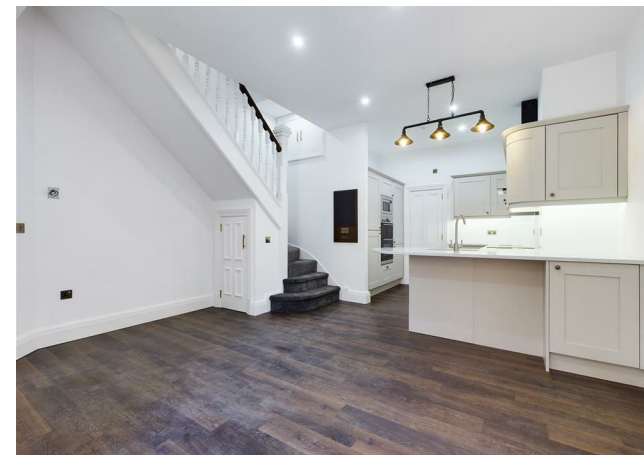
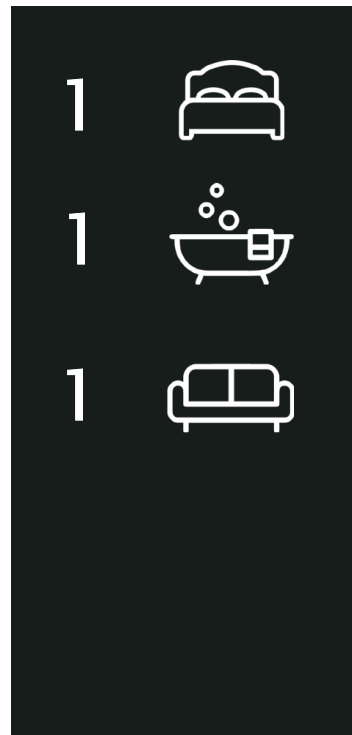


1ST FLOOR  
217 sq.ft. (20.2 sq.m.) approx.



TOTAL FLOOR AREA: 513 sq.ft. (47.6 sq.m.) approx.

Whilst every attempt has been made to ensure the accuracy of the floorplans contained here, measurements of doors, windows, rooms and any other items are approximate and no responsibility is taken for any error, omission or mis-statement. This plan is for illustrative purposes only and should be used as such by any prospective purchaser. The services, systems and appliances shown have not been tested and no guarantee as to their operability or efficiency can be given.  
Made with Miroplan ©2022



Energy Efficiency Rating		Current	Potential
Very energy efficient - lower running costs			
(92 plus) <b>A</b>			
(81-91) <b>B</b>			
(69-80) <b>C</b>			
(55-68) <b>D</b>			
(39-54) <b>E</b>			
(21-38) <b>F</b>			
(1-20) <b>G</b>			
Not energy efficient - higher running costs			
<b>England &amp; Wales</b>		EU Directive 2002/91/EC	

Agents Note: Whilst every care has been taken to prepare these particulars, they are for guidance purposes only. All measurements are approximate and are for general guidance purposes only and whilst every care has been taken to ensure their accuracy, they should not be relied upon and potential buyers/tenants are advised to recheck

**EDEN MIDCALF**  
SALES & LETTINGS

42 Hagley Road  
Stourbridge  
West Midlands  
DY8 1QD

01384 443434  
lettings@edenmidcalf.co.uk  
<https://www.edenmidcalf.co.uk/>