

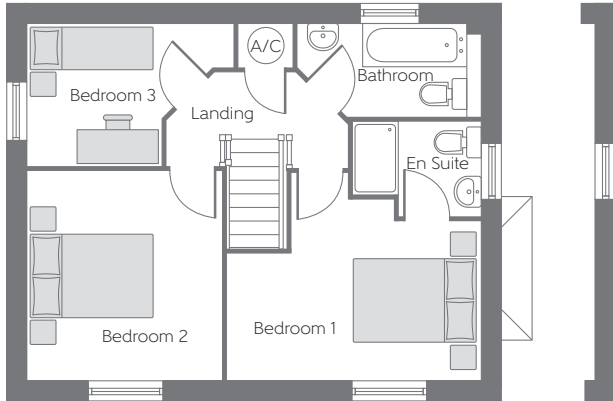
# The Sandford V2

THREE BEDROOM HOME



[bellway.co.uk](https://bellway.co.uk)

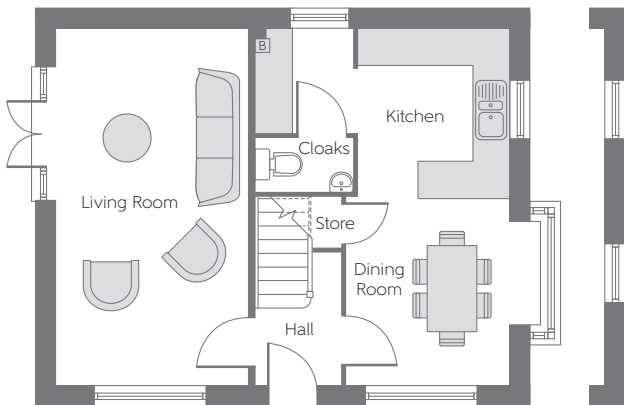
**Bellway**



No bay to plot 80 only.

## First Floor

Bedroom 1	4.170m (max)	x 3.403m (max)	13'8" x 11'1" (max) (max)
Bedroom 2	3.453m	x 3.207m	11'3" x 10'6"
Bedroom 3	3.386m (max)	x 2.333m (max)	11'1" x 7'7" (max) (max)



No bay to plot 80 only.

## Ground Floor

Living Room	5.880m	x 3.150m	19'3" x 10'4"
Dining Room	3.087m	x 2.687m	10'1" x 8'9"
Kitchen	2.793m	x 2.485m	9'2" x 8'1"

**B** - Boiler   **A/C** - Airing Cupboard   Cloaks - Cloakroom   - - - - - Reduced Head Height

**Furniture arrangements are for illustrative purposes only. Items are not included, nor to scale.**

The items shown in this key may be subject to change, and positions could vary from those indicated on this floorplan. Please refer to Sales Advisor for details of your selected plot. Computer generated image shown overleaf. External finishes, landscaping and configuration may vary from plot to plot. Please refer to Sales Advisor for further details. All dimensions are approximate and should not be used for carpet sizes, appliance spaces or furniture. We operate a policy of continuous improvement and individual features such as kitchen and bathroom layouts, doors, windows, garages and elevational treatments may vary from time to time. Consequently these particulars should be treated as general guidance only and do not constitute a contract, part of a contract or a warranty.