







## 25 Elm Close Elsenham, Bishop's Stortford,

Nestled in a peaceful and highly sought-after cul-de-sac in the heart of the village, this beautifully extended 3-bedroom family home offers the perfect blend of timeless charm and modern convenience.

Lovingly updated by the current owner, the property boasts spacious and stylish accommodation throughout. The ground floor features a welcoming entrance with W.C., a generous lounge perfect for relaxing, and a stunning open-plan kitchen/diner complete with sleek finishes and doors that open onto the private rear garden - ideal for entertaining.

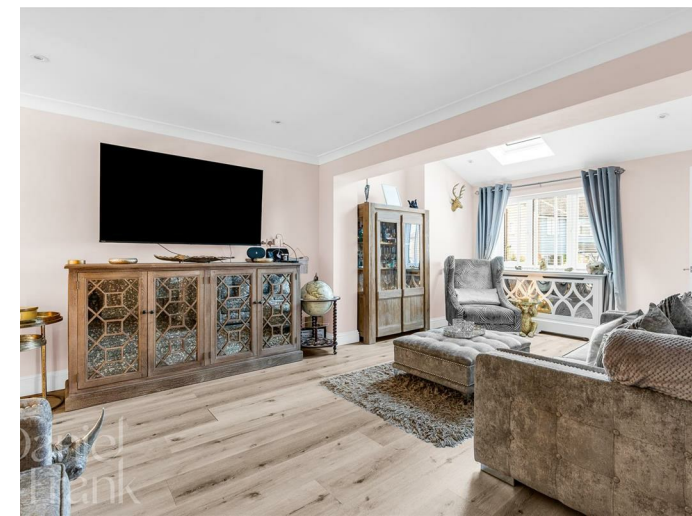
Upstairs, you'll find two spacious double bedrooms and a well-proportioned single bedroom. The main bedroom benefits from fitted wardrobes, providing ample built-in storage. These rooms are complemented by a beautifully refurbished family bathroom with a clean, modern aesthetic.

Outside, the home offers off-street parking, a single garage, and a secluded rear garden that provides a perfect space for children to play or adults to unwind.

Perfectly positioned just 0.3 miles from Elsenham Station, local shops, and a highly regarded primary school, this superb property delivers everything a growing family could need.

EPC - To be confirmed.

**Tenure** Freehold  
**Council** East Herts District Council





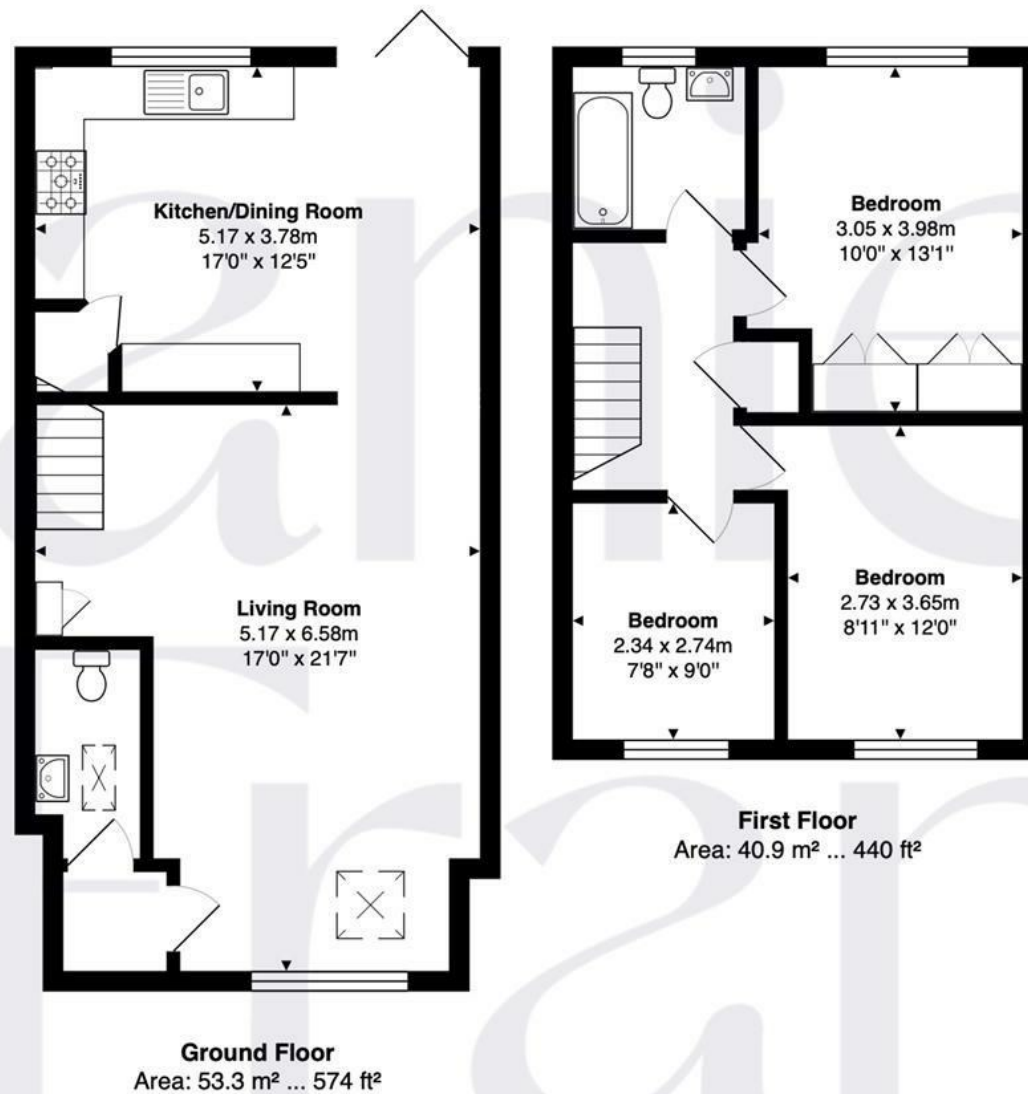


Your Next Chapter





Your Next Chapter



Total Area: 94.2 m<sup>2</sup> ... 1014 ft<sup>2</sup>

FOR ILLUSTRATIVE PURPOSES ONLY. NOT TO SCALE

Whilst every attempt has been made to ensure the accuracy of the floor plan shown, all measurements, positioning, fixtures, features, fittings and any other data shown are an approximate interpretation for illustrative purposes only and are not to scale. No responsibility is taken for any error, omission, miss-statement or use of data shown.

Property marketing provided by [www.matthewkyle.co.uk](http://www.matthewkyle.co.uk)





Important notice: These particulars have been prepared in good faith and do not form part of any offer or contract. All interested parties must verify for themselves the accuracy of the information provided. Any measurements, areas or distances are approximate. Photographs, plans and text are for guidance only and should not be relied upon. We have not performed a structural survey on this property, and it should not be assumed that the property has all necessary planning, building regulations or other consents. We have not tested any services, equipment, or facilities. Purchasers must satisfy themselves with suitable investigations prior to purchase.



Energy Efficiency Rating		
	Current	Potential
Very energy efficient - lower running costs		
(92 plus) <b>A</b>		
(81-91) <b>B</b>		
(69-80) <b>C</b>		
(55-68) <b>D</b>		
(39-54) <b>E</b>		
(21-38) <b>F</b>		
(1-20) <b>G</b>		
Not energy efficient - higher running costs		
<b>England &amp; Wales</b>	EU Directive 2002/91/EC	