

Brocklehurst House

ONE AND TWO BEDROOM APARTMENTS



bellway.co.uk

Bellway

The Mulberry – Plots 1, 8 & 16

Living/Dining	5.57m x 3.41m (max) (max)	18'3" x 11'2" (max) (max)
Kitchen	3.18m x 2.00m (max) (max)	10'5" x 6'7" (max) (max)
Bedroom 1	4.33m x 3.45m (max) (max)	14'2" x 11'4" (max) (max)
En Suite	2.30m x 1.44m (max) (max)	7'7" x 4'9" (max) (max)
Bedroom 2	4.33m x 2.30m	14'2" x 7'7"
Bathroom	2.10m x 1.92m	6'11" x 6'4"

* Patio/Terrace/Balcony plot dependant, please speak to sales advisor.



The Bamboo – Plots 4, 11 & 19

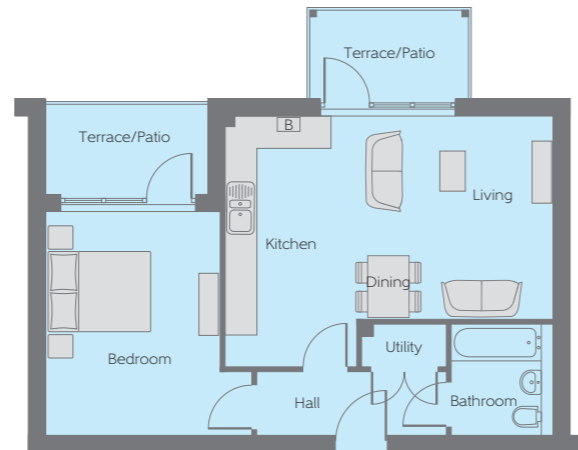
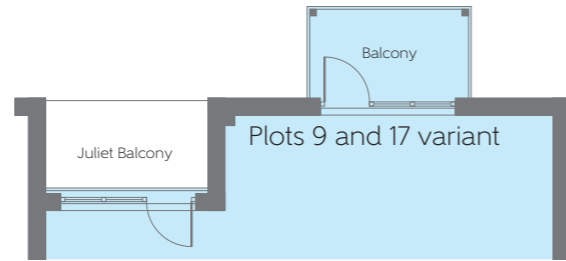
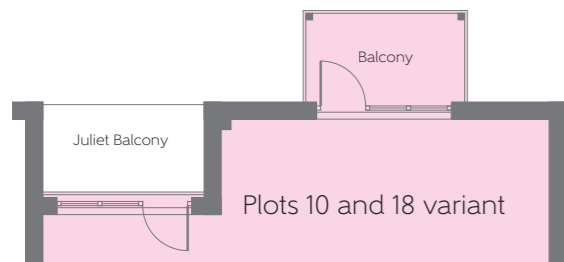
Living/Dining	4.82m x 3.30m (max) (max)	15'10" x 10'10" (max) (max)
Kitchen	4.82m x 1.80m (max) (max)	15'10" x 5'11" (max) (max)
Bedroom	3.98m x 3.02m (max) (max)	13'1" x 9'11" (max) (max)
Bathroom	2.10m x 1.92m	6'11" x 6'4"

* Patio/Terrace/Balcony plot dependant, please speak to sales advisor.



The Tussar – Plots 2, 9 & 17

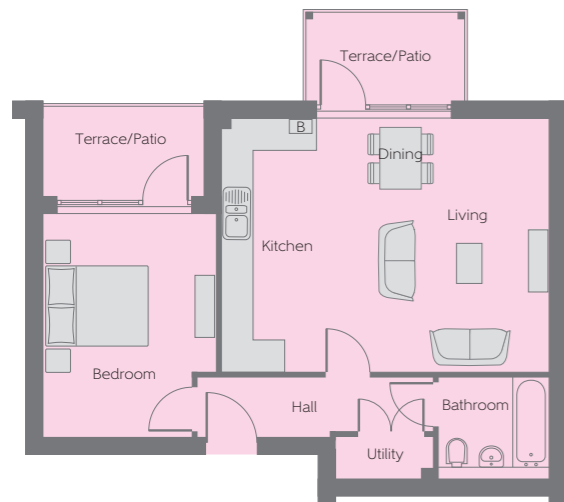
Living/Dining	4.73m x 4.70m (max) (max)	15'6" x 15'5" (max) (max)
Kitchen	4.73m x 1.50m (max) (max)	15'6" x 4'11" (max) (max)
Bedroom	4.23m x 3.28m (max) (max)	13'11" x 10'9" (max) (max)
Bathroom	2.10m x 1.92m	6'11" x 6'4"



The Dupion – Plots 5, 12 & 20

Living/Dining	5.44m x 4.78m (max) (max)	17'10" x 15'8" (max) (max)
Kitchen	4.78m x 2.10m (max) (max)	15'8" x 6'11" (max) (max)
Bedroom 1	4.12m x 3.11m (max) (max)	13'6" x 10'2" (max) (max)
En Suite	2.30m x 1.48m	7'7" x 4'10"
Bedroom 2	4.01m x 3.28m	13'2" x 10'9"
Bathroom	2.10m x 1.92m	6'11" x 6'4"

* Patio/Terrace/Balcony plot dependant, please speak to sales advisor.



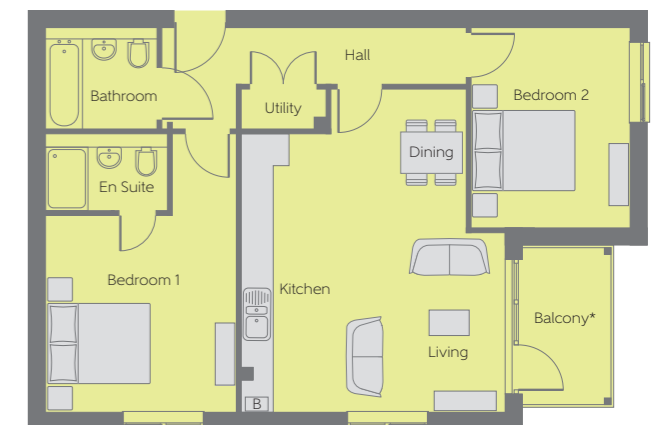
The Assam – Plots 3, 10 & 18

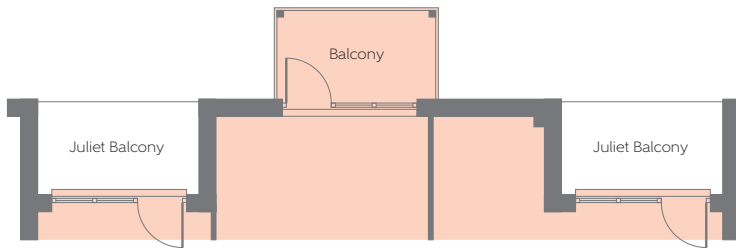
Living/Dining	4.80m x 4.40m (max) (max)	15'9" x 14'5" (max) (max)
Kitchen	4.80m x 1.80m (max) (max)	15'9" x 5'11" (max) (max)
Bedroom	4.22m x 3.28m (max) (max)	13'10" x 10'9" (max) (max)
Bathroom	2.10m x 1.92m	6'11" x 6'4"

The Fuji – Plots 6, 13 & 21

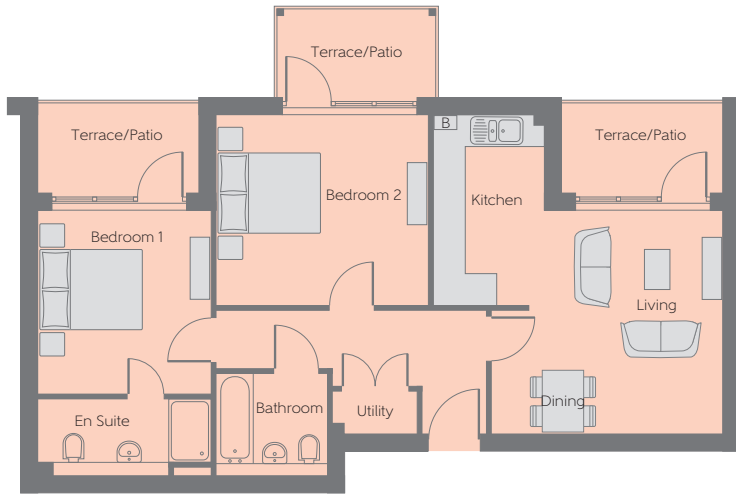
Living/Dining	6.10m x 3.48m (max) (max)	20'0" x 11'5" (max) (max)
Kitchen	5.26m x 1.50m (max) (max)	17'3" x 4'11" (max) (max)
Bedroom 1	5.26m x 3.58m (max) (max)	17'3" x 11'9" (max) (max)
En Suite	2.30m x 1.44m	7'7" x 4'9"
Bedroom 2	3.79m x 3.00m	12'5" x 9'10"
Bathroom	2.10m x 1.92m	6'11" x 6'4"

* Patio/Terrace/Balcony plot dependant, please speak to sales advisor.





Plots 14 and 22 variant

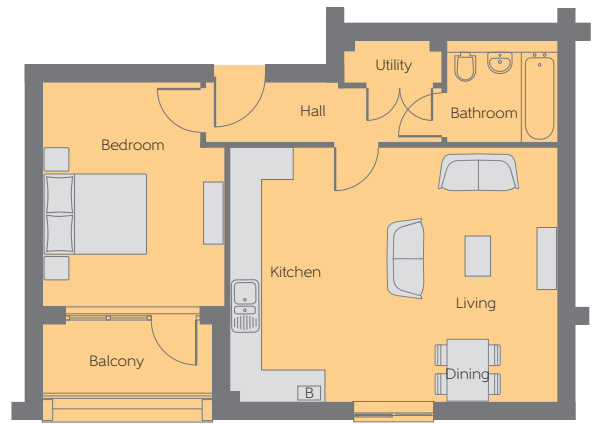


The Shantung – Plots 7, 14 & 22

Living/Dining	4.23m x 4.38m (max) (max)	13'11" x 14'4" (max) (max)
Kitchen	3.60m x 2.10m (max) (max)	11'10" x 6'11" (max) (max)
Bedroom 1	3.48m x 3.28m	11'5" x 10'9"
En Suite	3.28m x 1.44m	10'9" x 4'9"
Bedroom 2	4.01m x 3.60m	13'2" x 11'10"
Bathroom	2.10m x 1.92m	6'11" x 6'4"

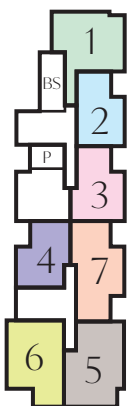
The Brocade – Plot 15

Living/Dining	4.82m x 4.38m	15'10" x 14'4"
Kitchen	4.82m x 1.80m	15'10" x 5'11"
Bedroom	4.25m x 3.44m (max) (max)	13'11" x 11'3" (max) (max)
Bathroom	2.10m x 1.92m	6'11" x 6'4"



The Brocade – Plot 23

Living/Dining	4.82m x 4.38m	15'10" x 14'4"
Kitchen	4.82m x 1.80m	15'10" x 5'11"
Bedroom	4.25m x 3.44m (max) (max)	13'11" x 11'3" (max) (max)
Bathroom	2.10m x 1.92m	6'11" x 6'4"



Ground Floor First Floor Second Floor

[B] - Boiler BS - Bin Store CS - Cycle Store P - Plant Room

Furniture arrangements are for illustrative purposes only. Items are not included, nor to scale.

The items shown in this key may be subject to change, and positions could vary from those indicated on this floorplan. Please refer to Sales Advisor for details of your selected plot. Computer generated image shown overleaf. External finishes, landscaping and configuration may vary from plot to plot. Please refer to Sales Advisor for further details. All dimensions are approximate and should not be used for carpet sizes, appliance spaces or furniture. We operate a policy of continuous improvement and individual features such as kitchen and bathroom layouts, doors, windows, garages and elevational treatments may vary from time to time. Consequently these particulars should be treated as general guidance only and do not constitute a contract, part of a contract or a warranty.