

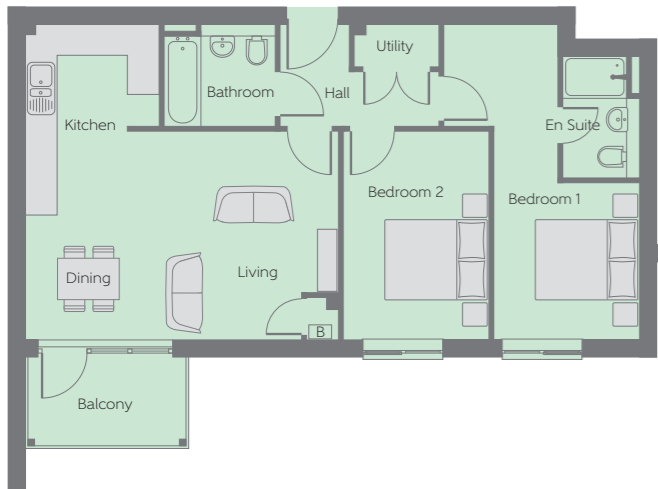
# Weaver House

ONE, TWO AND THREE BEDROOM APARTMENTS



[bellway.co.uk](https://bellway.co.uk)

**Bellway**

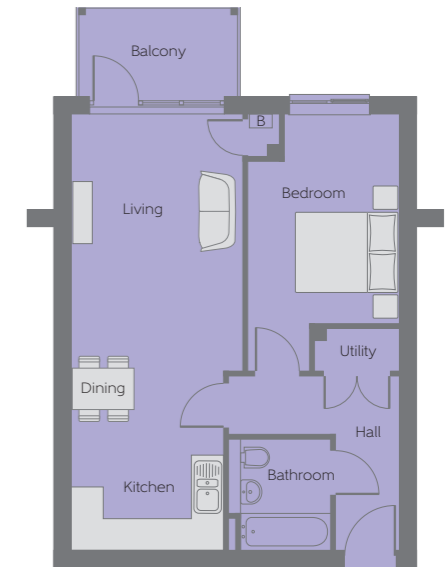


### The Canton – Plots 24, 33, 40 & 47

Living/Dining	5.91m x 3.94m (max) (max)	19'5" x 12'11" (max) (max)
Kitchen	3.60m x 2.52m (max) (max)	11'10" x 8'3" (max) (max)
Bedroom 1	5.96m x 2.75m (max) (max)	19'7" x 9'0" (max) (max)
En Suite	2.30m x 1.44m	7'7" x 4'9"
Bedroom 2	3.94m x 2.73m	12'11" x 8'11"
Bathroom	2.10m x 1.92m	6'11" x 6'4"

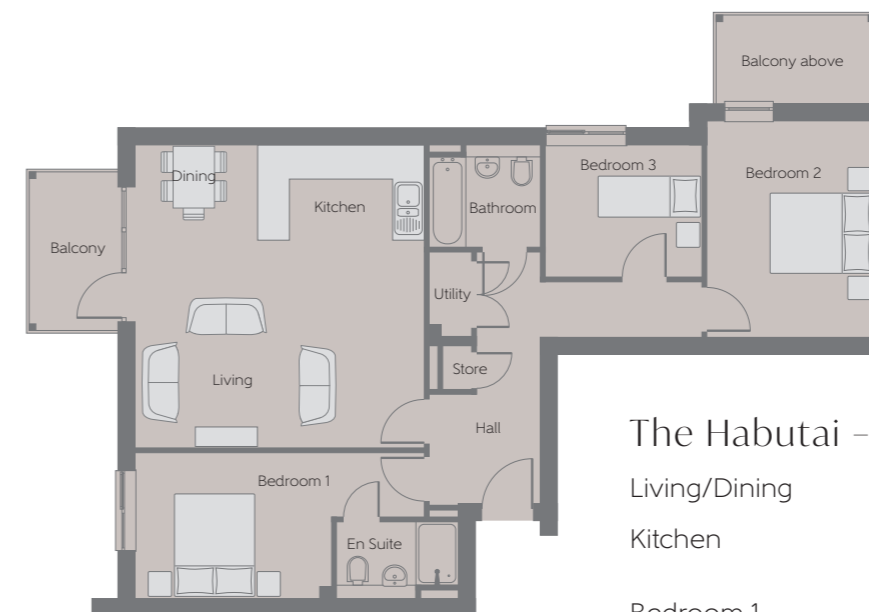
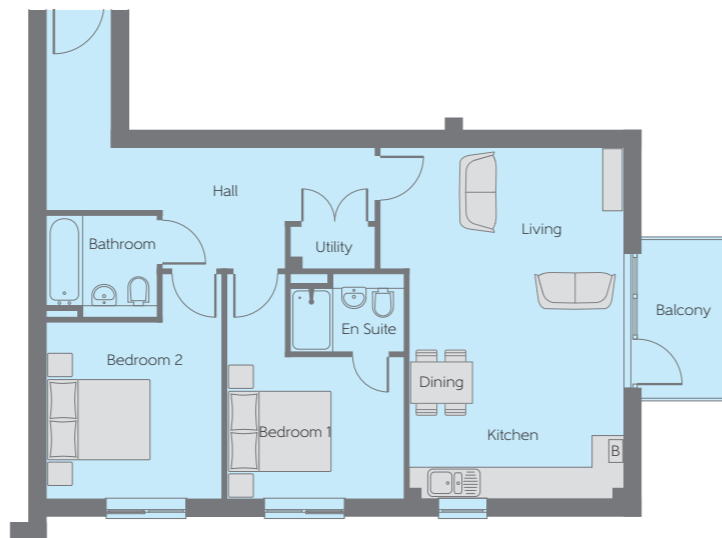
### The Duchess – Plots 27, 29, 36 & 43

Living/Dining	6.44m x 3.24m (max) (max)	21'2" x 10'8" (max) (max)
Kitchen	2.88m x 1.80m (max) (max)	9'5" x 5'11" (max) (max)
Bedroom	4.85m x 2.87m (max) (max)	15'11" x 9'5" (max) (max)
Bathroom	2.10m x 1.92m	6'11" x 6'4"



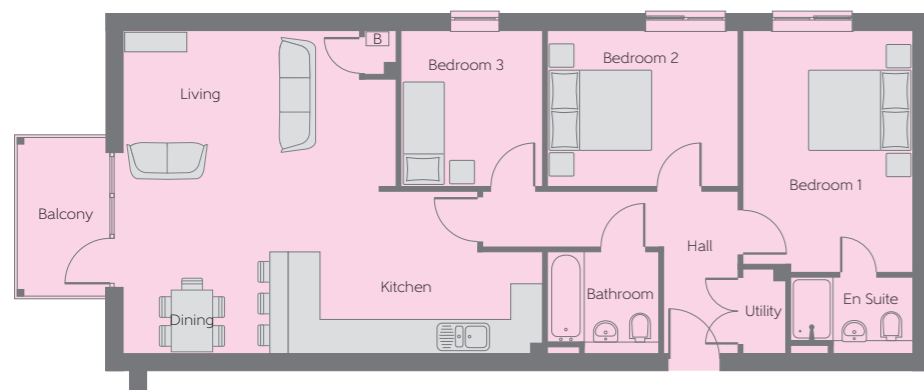
### The Garbadine – Plots 25, 34, 41 & 48

Living/Dining	4.85m x 4.60m (max) (max)	15'11" x 15'1" (max) (max)
Kitchen	4.06m x 1.80m (max) (max)	13'4" x 5'11" (max) (max)
Bedroom 1	4.25m x 3.33m (max) (max)	13'11" x 10'11" (max) (max)
En Suite	2.13m x 1.46m	7'0" x 4'9"
Bedroom 2	4.25m x 3.32m (max) (max)	13'11" x 10'11" (max) (max)
Bathroom	2.10m x 1.92m	6'11" x 6'4"



### The Habutai – Plot 28

Living/Dining	5.72m x 5.46m	18'9" x 17'11"
Kitchen	3.14m x 1.80m (max) (max)	10'4" x 5'11" (max) (max)
Bedroom 1	5.46m x 2.75m (max) (max)	17'11" x 9'0" (max) (max)
En Suite	2.30m x 1.44m	7'7" x 4'9"
Bedroom 2	4.09m x 3.16m	13'5" x 10'4"
Bedroom 3	2.96m x 2.49m	9'9" x 8'2"
Bathroom	2.10m x 1.92m	6'11" x 6'4"

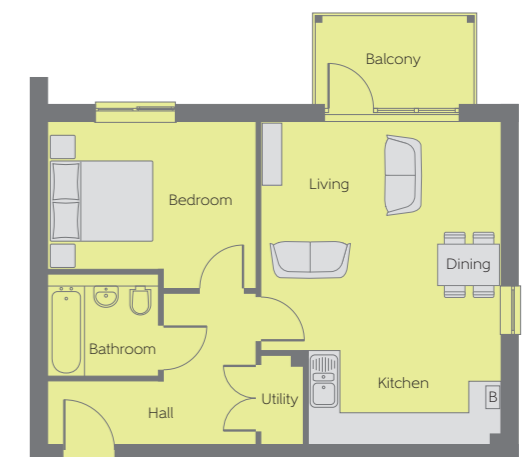


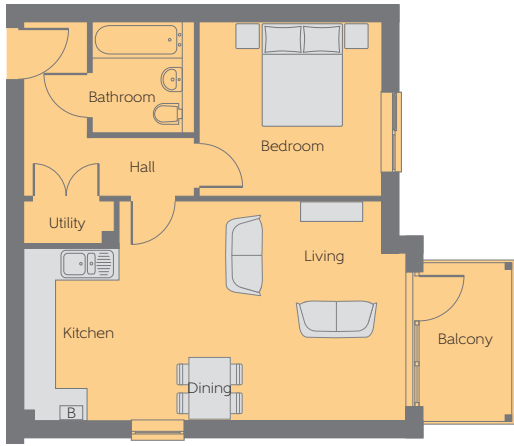
### The Georgette – Plots 26, 35, 42 & 49

Living/Dining	6.11m x 5.16m (max) (max)	20'1" x 16'11" (max) (max)
Kitchen	5.15m x 1.93m (max) (max)	16'11" x 6'4" (max) (max)
Bedroom 1	4.56m x 3.21m	15'0" x 10'6"
En Suite	2.30m x 1.44m	7'7" x 4'9"
Bedroom 2	3.58m x 2.94m	11'11" x 9'8"
Bedroom 3	2.94m x 2.65m	9'8" x 8'8"
Bathroom	2.10m x 1.92m	6'11" x 6'4"

### The Twill – Plots 30, 37 & 44

Living/Dining	4.54m x 4.28m (max) (max)	14'11" x 14'1" (max) (max)
Kitchen	4.64m x 1.83m (max) (max)	15'3" x 6'0" (max) (max)
Bedroom	3.92m x 3.15m (max) (max)	12'10" x 10'4" (max) (max)
Bathroom	2.10m x 1.92m	6'11" x 6'4"



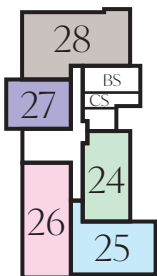
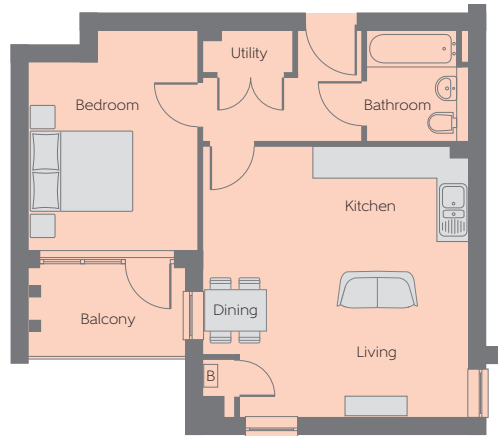


### The Garad – Plots 31, 38 & 45

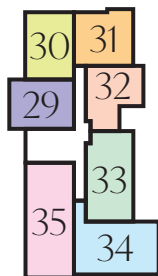
Living/Dining	5.39m x 4.15m (max) (max)	17'8" x 13'7" (max) (max)
Kitchen	3.25m x 1.83m (max) (max)	10'8" x 6'0" (max) (max)
Bedroom	3.45m x 3.30m	11'4" x 10'10"
Bathroom	2.10m x 1.92m	6'11" x 6'4"

### The Surah – Plots 32, 39 & 46

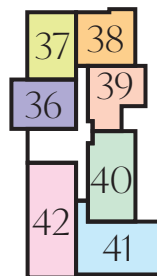
Living/Dining	5.02m x 3.32m	16'6" x 10'11"
Kitchen	3.54m x 1.80m (max) (max)	11'8" x 5'11" (max) (max)
Bedroom	4.16m x 3.20m (max) (max)	13'8" x 10'6" (max) (max)
Bathroom	2.10m x 1.92m	6'11" x 6'4"



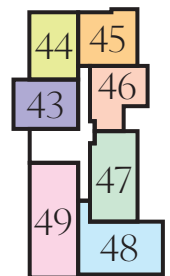
Ground Floor



First Floor



Second Floor



Third Floor

- Boiler BS - Bin Store CS - Cycle Store P - Plant Room

**Furniture arrangements are for illustrative purposes only. Items are not included, nor to scale.**

The items shown in this key may be subject to change, and positions could vary from those indicated on this floorplan. Please refer to Sales Advisor for details of your selected plot. Computer generated image shown overleaf. External finishes, landscaping and configuration may vary from plot to plot. Please refer to Sales Advisor for further details. All dimensions are approximate and should not be used for carpet sizes, appliance spaces or furniture. We operate a policy of continuous improvement and individual features such as kitchen and bathroom layouts, doors, windows, garages and elevational treatments may vary from time to time. Consequently these particulars should be treated as general guidance only and do not constitute a contract, part of a contract or a warranty.