



BLUEPRINTS & CO.
P R O P E R T I E S

Sales - Lettings - Management - Mortgages



Haynes Close

, London, N17 0QX

Offers over £280,000



Welcome to this charming two-bedroom maisonette located in the desirable Haynes Close, Tottenham. This property boasts a delightful reception room, perfect for entertaining guests or simply relaxing after a long day. With two cosy bedrooms, there is ample space for a small family or for those who enjoy having a guest room or home office.

The maisonette features a well-maintained bathroom, ensuring your comfort and convenience. The property's split-level layout adds a unique touch, providing a sense of space and separation within the home.

One of the standout features of this property is its excellent condition, offering a bright and airy atmosphere that is sure to uplift your spirits and private balcony. The proximity to Northumberland Park train station makes commuting a breeze, ideal for those who need to travel for work or leisure.

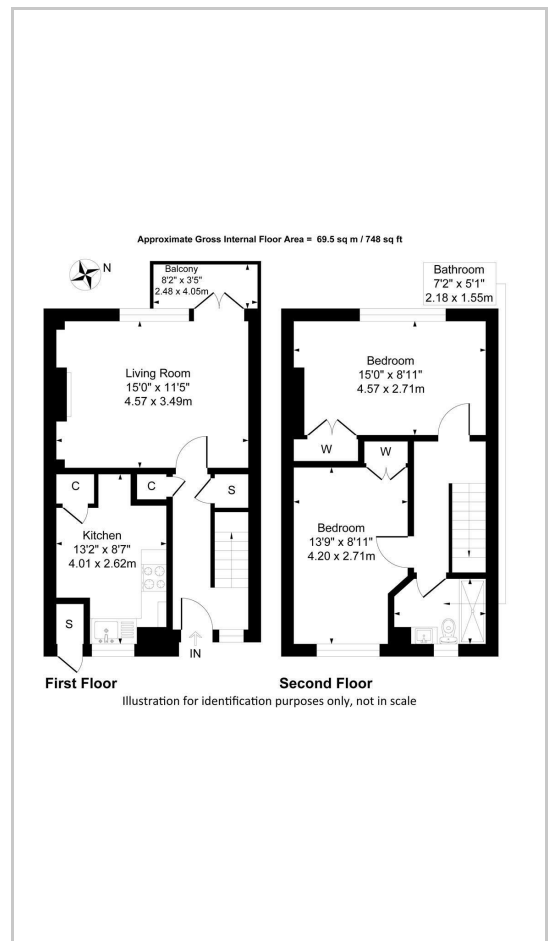
Parking is made easy with permits available, ensuring you never have to worry about finding a space for your vehicle. Additionally, being close to schools, parks, and amenities, this location offers



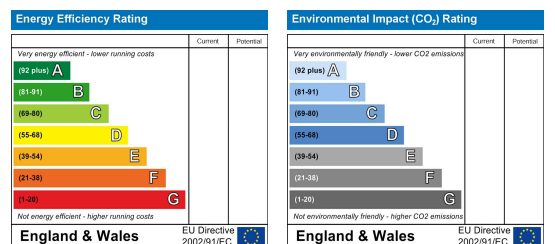
Area Map



Floor Plans



Energy Efficiency Graph



These particulars, whilst believed to be accurate are set out as a general outline only for guidance and do not constitute any part of an offer or contract. Intending purchasers should not rely on them as statements of representation of fact, but must satisfy themselves by inspection or otherwise as to their accuracy. No person in this firm's employment has the authority to make or give any representation or warranty in respect of the property.

📍 244 Fore Street, Edmonton, London, N18 2QD ☎ 02080048288

✉ info@blueprint-co.net 🌐 www.blueprint-co.net