



BLUEPRINTS & CO.
P R O P E R T I E S

Sales - Lettings - Management - Mortgages



Steele Road

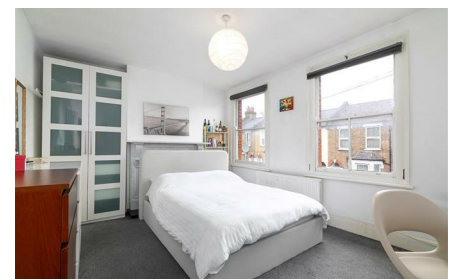
, Tottenham, N17 6YA

£375,000

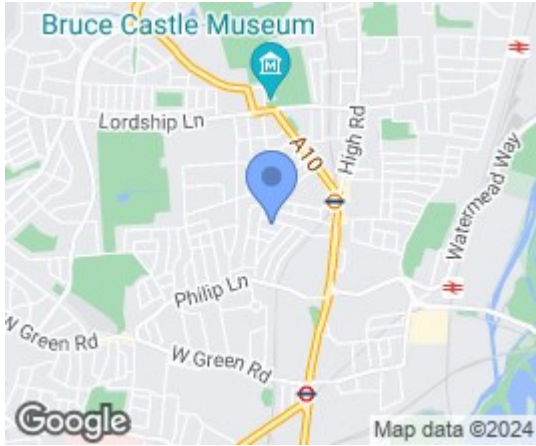


Blueprints & Co. Properties welcomes this meticulously maintained two bedroom first floor flat in Tottenham boasts a spacious living room, two bedrooms, a separate W/C and a modern fitted kitchen. With easy access to Seven Sisters tube station, the property also highlights the convenience of excellent transport links, proximity to good schools, and easy access to local amenities. The added potential of a loft space for extension enhances the property's appeal.

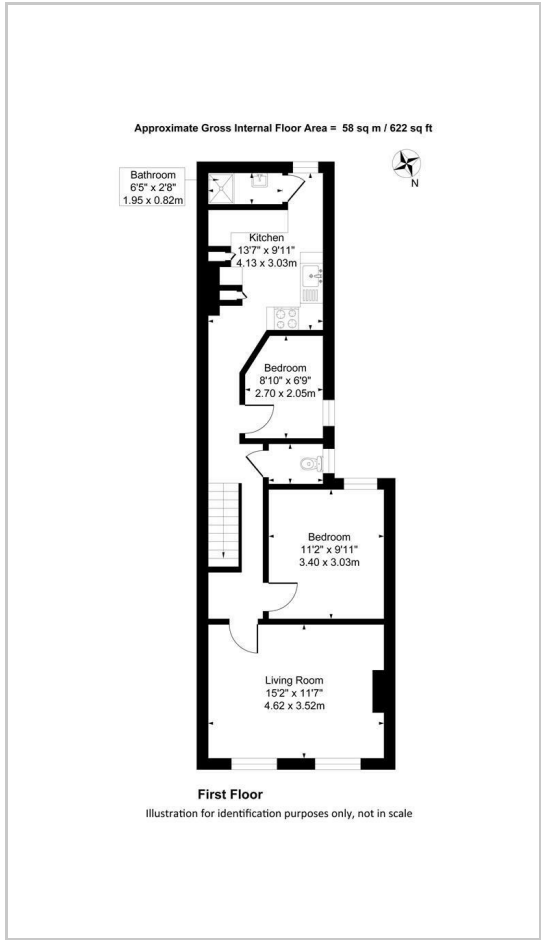
The property is being offered on a chain free basis.



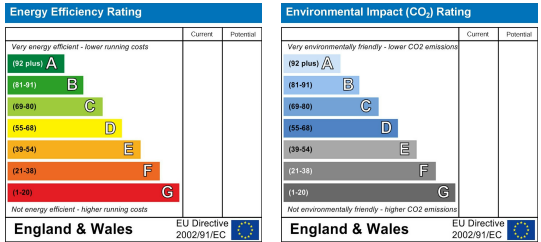
Area Map



Floor Plans



Energy Efficiency Graph



These particulars, whilst believed to be accurate are set out as a general outline only for guidance and do not constitute any part of an offer or contract. Intending purchasers should not rely on them as statements of representation of fact, but must satisfy themselves by inspection or otherwise as to their accuracy. No person in this firm's employment has the authority to make or give any representation or warranty in respect of the property.