



BLUEPRINTS & CO.
P R O P E R T I E S

Sales - Lettings - Management - Mortgages



Kevelioc Road

, London, N17 7PR

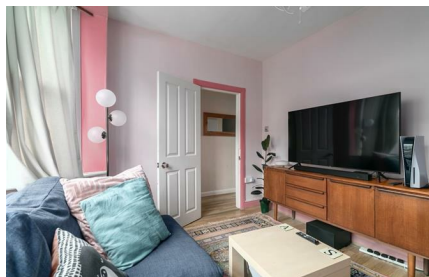
£474,995



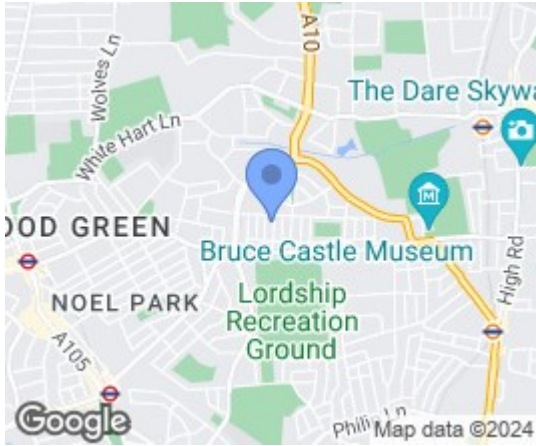
Blueprints & Co. Properties are pleased to present this lovely two bedroom Victorian terrace house located in the sort after area of Tower Gardens in Tottenham. The property boast Living room with bay windows, large kitchen diner that leads to a west facing garden, upstairs bathroom two double bedrooms and stairs to a loft room (storage).

The property is close to lordship recreation grounds, Bruce Grove, tower Gardens and Down Hills park.
The property is has good local schools and easy access to either Bruce Grove over Ground or Turnpike Lane tube station.

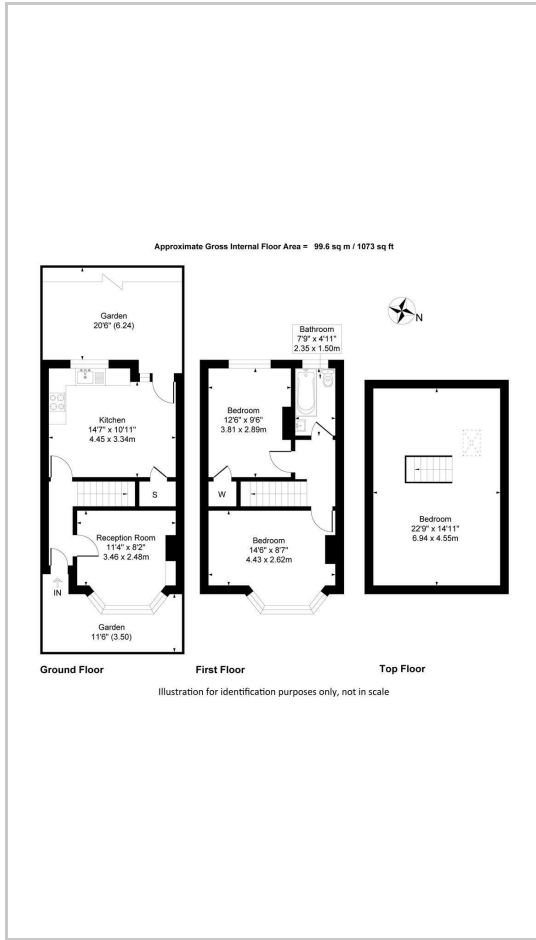
The house has benefited from Double Glazing, (wooden at front due to conservation area) a full rewire and a combi boiler installed.
Also a loft space which was converted to an office during the pandemic.



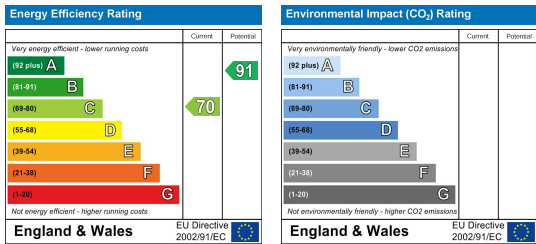
Area Map



Floor Plans



Energy Efficiency Graph



These particulars, whilst believed to be accurate are set out as a general outline only for guidance and do not constitute any part of an offer or contract. Intending purchasers should not rely on them as statements of representation of fact, but must satisfy themselves by inspection or otherwise as to their accuracy. No person in this firm's employment has the authority to make or give any representation or warranty in respect of the property.