

WOODLANDS HOUSE

WHITEWELL | BB7 3DG

4 Bed | 5.5 Bath

ZOOPLA rightmove

PRS
Property
Recess
Scheme

Discover a brighter approach to real estate
0151 541 7087 | info@kuavo.co.uk | kuavo.co.uk



Woodlands House | Whitewell, BB7 3DG

Listed at £2,195,000

Nestled in the picturesque village of Whitewell, Lancashire, this distinguished country home embodies luxury and tranquillity, offering an unparalleled lifestyle for the discerning homeowner; this is a rare opportunity to purchase a home of this magnitude in this exclusive area of the Forest of Bowland.



Entrance Hall

The grand entrance hall features a handmade staircase with intricate carvings, showcasing exceptional craftsmanship.

The staircase leads to a stunning balcony landing, adding a touch of architectural elegance and providing a vantage point to admire the beauty of your home.





Dining Room

Off the entrance hall is the elegant main dining room where you will host grand dinners and intimate family meals alike.

With its tasteful decor and ample space, this room is perfect for creating unforgettable dining experiences.



Kitchen & Orangery

The heart of the home, the traditional kitchen with custom cabinetry, marble work surfaces, and high-end appliances, features an adjoining orangery, flooding the space with natural light.

Enjoy breakfast overlooking the beauty of your surroundings and the fells beyond; the orangery is equipped with a Bang & Olufsen Beosound Shape system, ensuring your culinary experiences are accompanied by impeccable sound quality and style.

The main kitchen is complemented by a prep kitchen and spacious pantry, offering additional space for meal preparation and storage.

These areas will impress the most discerning culinary enthusiast, providing functionality and convenience coupled with style and outstanding quality.







Snug

For those cozy evenings, retreat to the snug, a haven of comfort and warmth. Furnished with sumptuous Knole sofas, this intimate space is perfect for unwinding with a good book or enjoying a quiet conversation.



Bar & Swimming Pool

Entertain guests in style in your private bar, designed for sophisticated gatherings and intimate soirées. This space exudes charm and elegance, providing the perfect backdrop for memorable moments.

Immerse yourself in the serenity of your own private oasis. The heated indoor swimming pool is perfect for both leisurely swims and invigorating exercise sessions, overlooking the elegant surroundings.







Boot Room

Practicality meets style in the spacious boot room, designed to accommodate all your outdoor attire with ease. This functional area ensures that the rest of the home remains pristine, regardless of the weather.



Owners' Suite

The opulent owners' suite offers a sanctuary of luxury and relaxation. Featuring custom solid oak wardrobes, a two-story dressing room, and a spacious bathroom complete with a steam room, this retreat is truly exceptional.

Additionally, the owner's suite has direct access to the pool area via a beautiful wrought iron spiral staircase, combining elegance with convenience.



Guest Bedroom Suites

Your guests will enjoy the comfort and privacy of three beautifully appointed guest bedroom suites, each with its own en-suite bathroom. These elegant rooms ensure that your visitors experience the same level of luxury and comfort as you do.



Outbuildings

With two double garages, there is ample space for multiple vehicles to be stored securely; kennels, woodstore, and workshop offer additional convenience and functional spaces. A wine cellar beneath the property provides space to store a sizeable collection in a stable, secure environment.





Garden Room

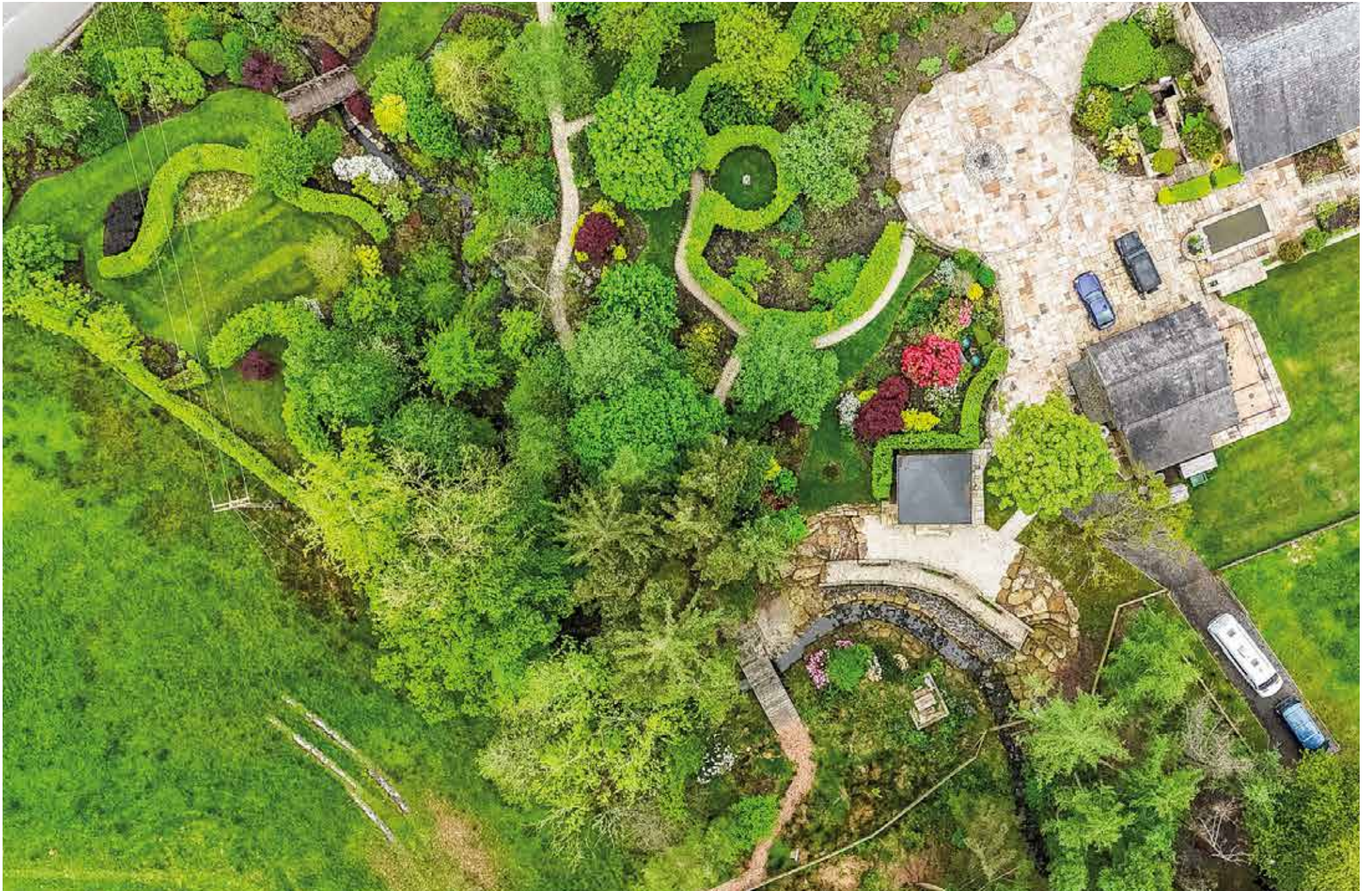
The charming garden room provides a seamless connection to the outdoors, ideal for casual gatherings, office space in inspirational surroundings, or simply relaxing and enjoying the beauty of your landscaped gardens.



Extensive Landscaped Gardens

The extensive landscaped gardens are a true feast for the senses. Designed to provide year-round interest and colour, the gardens offer a tranquil retreat, perfect for leisurely strolls, gardening, or outdoor entertaining; the expansive paddock and lush lawn area extend the grandeur of this estate, providing ample space for equestrian activities or outdoor recreation. The area is also easily large enough to accommodate helicopter landings, adding a touch of convenience and exclusivity for the modern business-person.





Additional Information

This exceptional property comes fully furnished with high-quality luxury items and exquisite antiques, ensuring that every room exudes elegance and sophistication.

From the timeless charm of antique furniture to the comfort of modern luxury, every detail has been thoughtfully curated.

This splendid home is situated close to a selection of renowned Michelin-starred restaurants, offering gourmet dining experiences that are sure to delight even the most discerning palate.

Additionally, the celebrated Inn at Whitewell pub is just a stone's throw away, providing a charming setting for enjoying traditional British fare and fine ales in a cozy, historic environment.

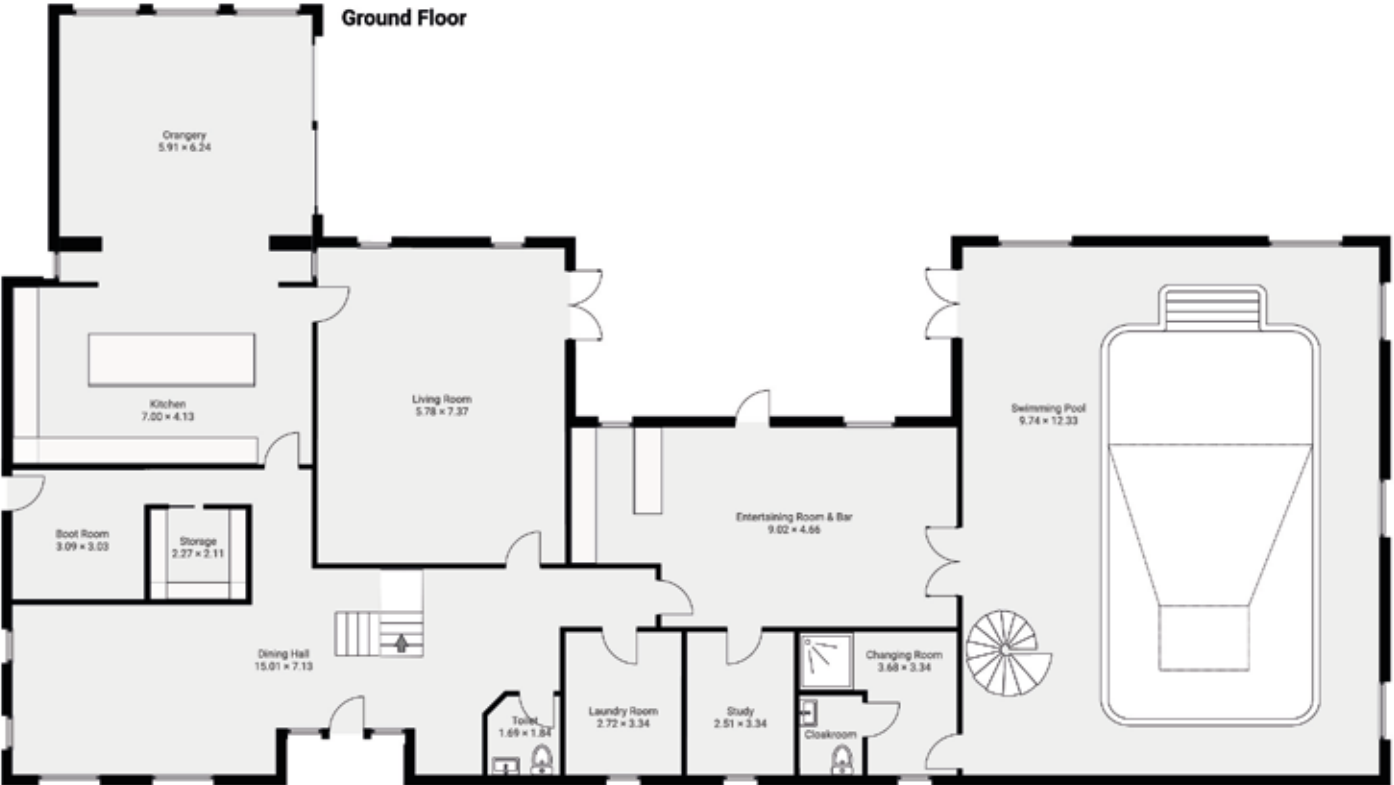
This exceptional property is a rare gem, offering the perfect blend of rural charm and luxurious living.

Situated in the idyllic village of Whitewell, you are surrounded by the natural beauty of the Lancashire countryside while still being within easy reach of local amenities and national transport links.

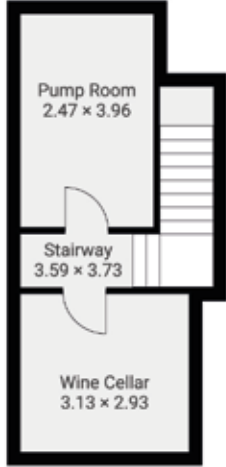
Do not miss the opportunity to make this stunning country home your own. Contact us today to arrange a private viewing and experience the magic of this exquisite property first-hand.



Floor Plan



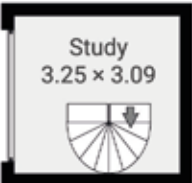
Basement • Level 1



1st Floor



2nd Floor





WOODLANDS HOUSE

WHITEWELL | BB7 3DG

4 Bed | 5.5 Bath

ZOOPLA rightmove 

PRS Property
Recess
Scheme

Discover a brighter approach to real estate
0151 541 7087 | info@kuavo.co.uk | kuavo.co.uk