




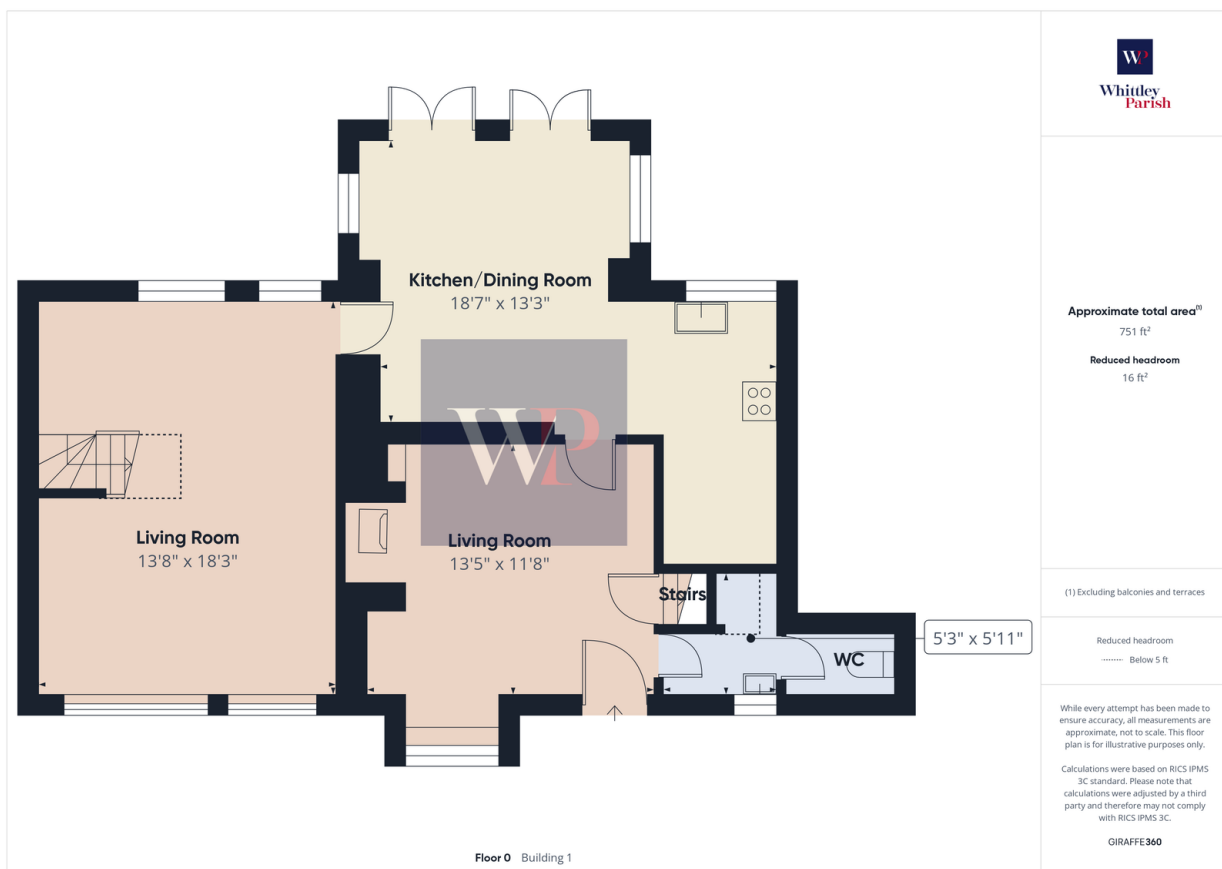
White Hart Street, East Harling, Norwich, NR16 2NE

Guide Price £375,000

 4  2  2



- *Guide Price £375,000 - £400,000*
- Two Reception Rooms
- Garden Office/Studio
- Generous Plot
- Highly Sought After Village
- No Onward Chain
- Kitchen/Dining Room
- Off Road Parking
- South Facing Garden
- Solar Panels



Beautifully extended 1840s semi-detached home in the heart of East Harling, offering two reception rooms, kitchen/dining room, four bedrooms, bathroom, upstairs shower room, and downstairs W/C. Features a mature south-facing garden, separate studio/office, and off-road parking. Just a short walk to village shops, school, and amenities—perfect for family living with character and space.