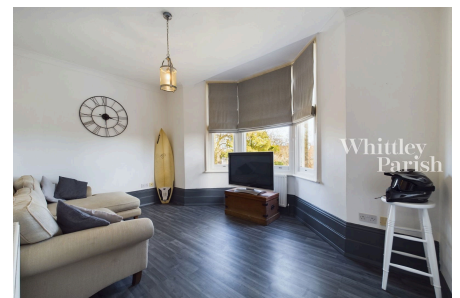


## London Road, Attleborough, NR17 2DJ

Guide Price £140,000 - £150,000

🛏 2 🚗 1 🚲 1



Spacious two bedroom first floor apartment with allocated parking space and within close proximity to the town centre.

## Key Features

- Ideal for first time buyers
- Allocated parking space
- Open plan living
- Gas central heating
- EPC rating D
- First floor apartment
- Two bedrooms
- close to town centre
- Council tax band A
- Guide Price £140,000 - £150,000

