

# DURDEN & HUNT

INTERNATIONAL



Leonard Way, Brentwood CM14

£250,000

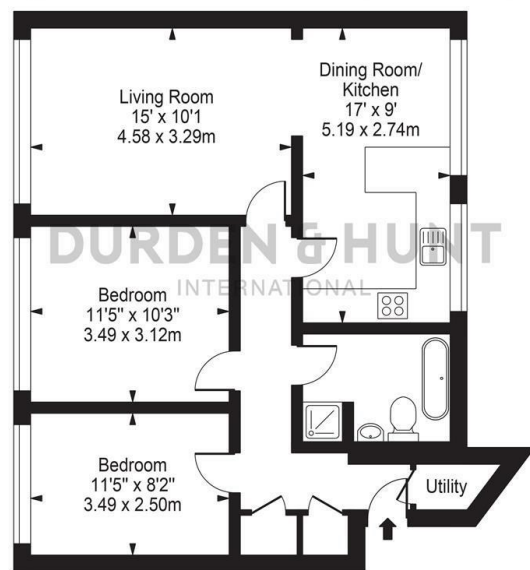
- Excellent Transport Links
- Communal Green Spaces
- Two Double Bedrooms
- No Onward Chain
- First Floor Apartment
- Spacious Living Room
- Contemporary Family Bathroom
- Off Road Parking
- Open Plan Kitchen And Dining Room
- Utility And Storage Spaces

159 High Street, Hornchurch, Essex, RM11 3YD  
01708 202 777

[hornchurch@urdenandhunt.co.uk](mailto:hornchurch@urdenandhunt.co.uk)  
<https://www.durdenandhunt.co.uk>

# Hamlet Court, Leonard Way

Approx. Gross Internal Area 730 Sq Ft - 67.86 Sq M



First Floor

For Illustration Purposes Only - Not To Scale

This floor plan should be used as a general outline for guidance only and does not constitute in whole or in part an offer or contract. Any intending purchaser or lessee should satisfy themselves by inspection, searches, enquiries and full survey as to the correctness of each statement. Any areas, measurements or distances quoted are approximate and should not be used to value a property or be the basis of any sale or let.

## Viewings

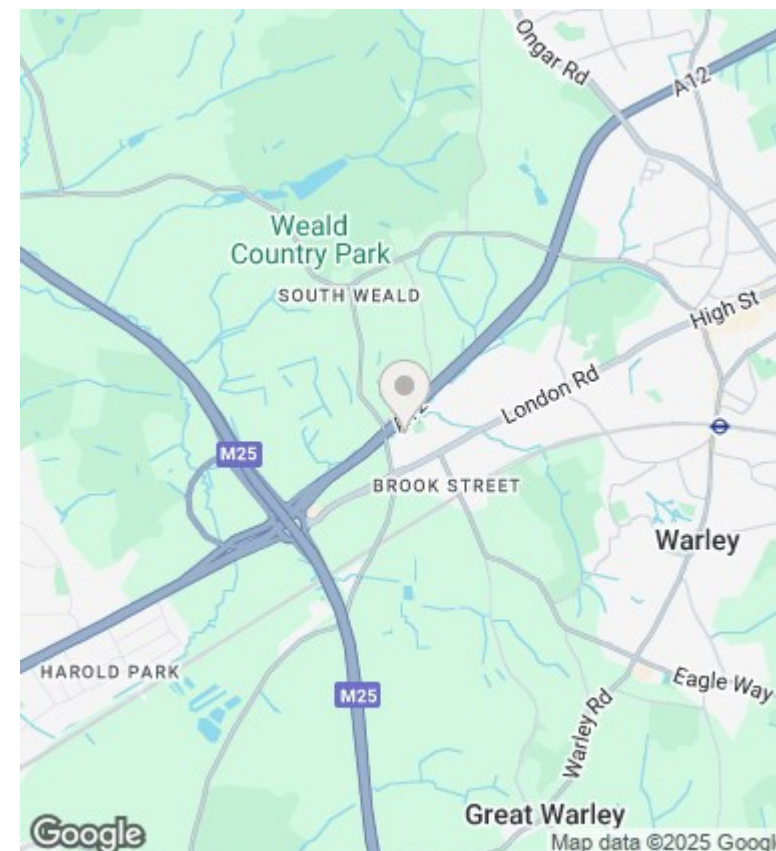
Viewings by arrangement only. Call 01708 202 777 to make an appointment.

## Council Tax Band

C

## EPC Rating:

C



Energy Efficiency Rating		
	Current	Potential
Very energy efficient - lower running costs		
(92 plus) <b>A</b>		
(81-91) <b>B</b>		
(69-80) <b>C</b>	78	81
(55-68) <b>D</b>		
(39-54) <b>E</b>		
(21-38) <b>F</b>		
(1-20) <b>G</b>		
Not energy efficient - higher running costs		
<b>England &amp; Wales</b>	EU Directive 2002/91/EC	