

# DURDEN & HUNT

INTERNATIONAL



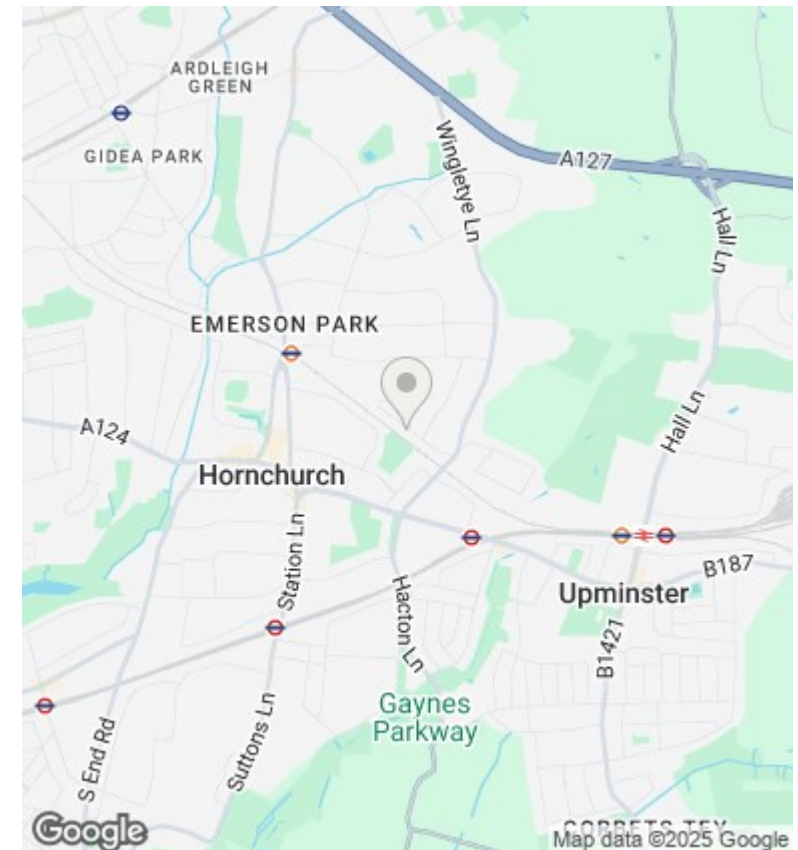
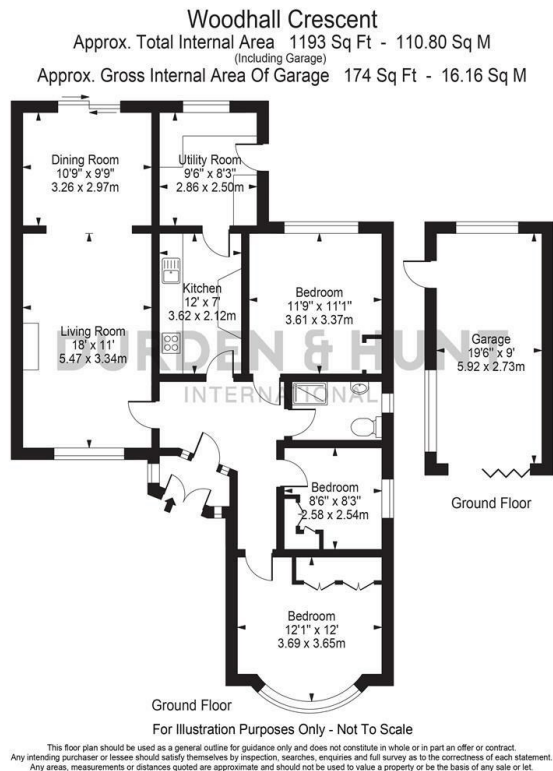
## Woodhall Crescent, Hornchurch RM11

£600,000

- Chain Free
- Large Garden
- Kitchen And Utility Room
- Semi Detached Bungalow
- Garage
- Three Bedrooms
- Off Road Parking
- Living Room And Separate Dining Room
- Family Bathroom

159 High Street, Hornchurch, Essex, RM11 3YD  
01708 202 777

[hornchurch@durdenandhunt.co.uk](mailto:hornchurch@durdenandhunt.co.uk)  
<https://www.durdenandhunt.co.uk>



## Viewings

Viewings by arrangement only. Call 01708 202 777 to make an appointment.

## Council Tax Band

F

## EPC Rating:

D

| Energy Efficiency Rating                    |         |                         |
|---|---------|-------------------------|
|   | Current | Potential               |
| Very energy efficient - lower running costs |         |                         |
| (92 plus) <b>A</b>                          |         | <b>84</b>               |
| (81-91) <b>B</b>                            |         |                         |
| (69-80) <b>C</b>                            |         | <b>61</b>               |
| (55-68) <b>D</b>                            |         |                         |
| (39-54) <b>E</b>                            |         |                         |
| (21-38) <b>F</b>                            |         |                         |
| (1-20) <b>G</b>                             |         |                         |
| Not energy efficient - higher running costs |         |                         |
| England & Wales                             |         | EU Directive 2002/91/EC |