

DURDEN & HUNT

INTERNATIONAL



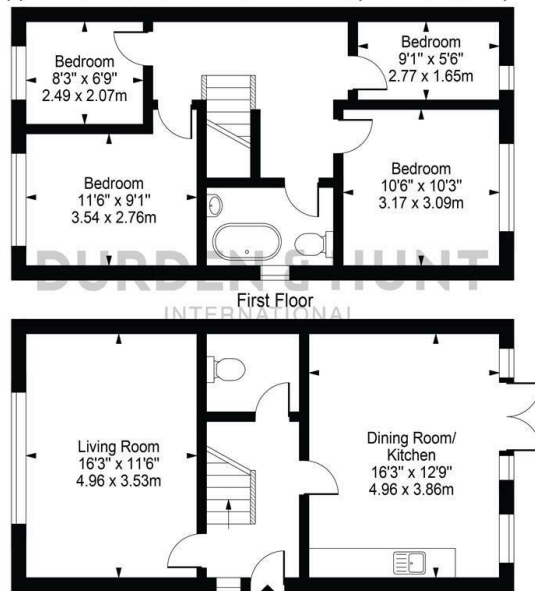
Frederick Road, Rainham RM13

Offers In The Region Of £500,000

- Four Bedroom House
- Good Size Rear Garden
- Open Plan Kitchen
- New Build
- Downstairs Wc
- Close To Transport
- Separate Reception Room

Frederick Road

Approx. Gross Internal Area 1044 Sq Ft - 97.00 Sq M



Ground Floor
For Illustration Purposes Only - Not To Scale

This floor plan should be used as a general outline for guidance only and does not constitute in whole or in part an offer or contract. Any intending purchaser or lessee should satisfy themselves by inspection, searches, enquiries and full survey as to the correctness of each statement. Any areas, measurements or distances quoted are approximate and should not be used to value a property or be the basis of any sale or let.

Viewings

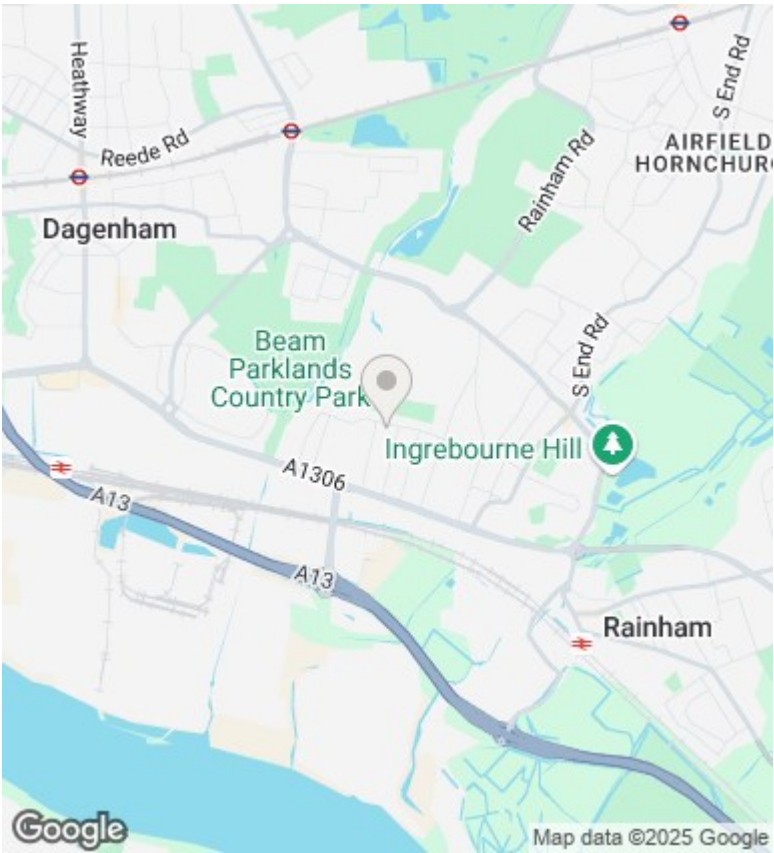
Viewings by arrangement only. Call 01708 202 777 to make an appointment.

Council Tax Band

New Build

EPC Rating:

C



| Energy Efficiency Rating | | |
|---|-------------------------|-----------|
| | Current | Potential |
| Very energy efficient - lower running costs | | |
| (92 plus) A | | 91 |
| (81-91) B | 80 | |
| (69-80) C | | |
| (55-68) D | | |
| (39-54) E | | |
| (21-38) F | | |
| (1-20) G | | |
| Not energy efficient - higher running costs | | |
| England & Wales | EU Directive 2002/91/EC | |