

DURDEN & HUNT

INTERNATIONAL



Bournebrook Grove, Romford RM7

£375,000

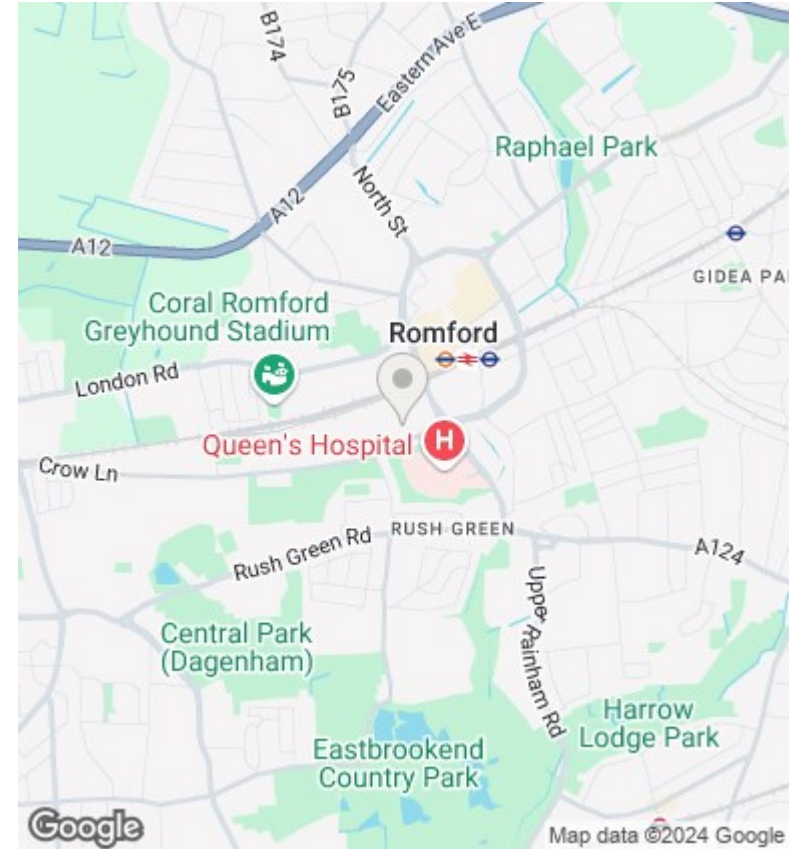
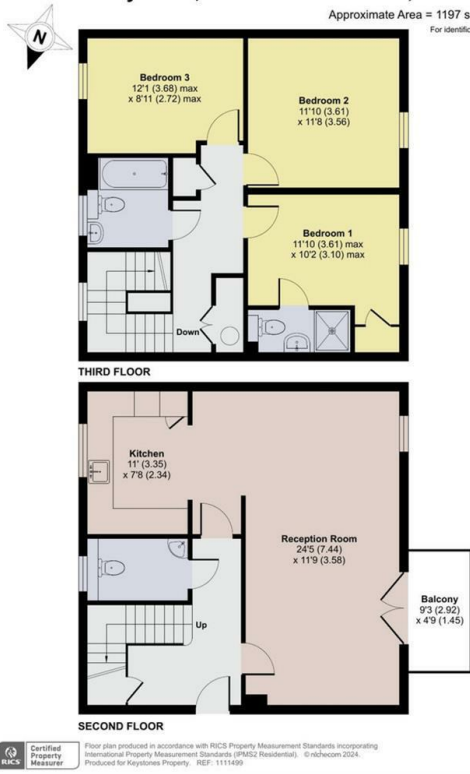
- Excellent Transport Links
- Balcony
- Two Additional Bedrooms
- Modern Development
- Primary Bedroom With En Suite
- Family Bathroom
- Allocated Parking
- Large Kitchen, Living And Dining Space
- Guest Cloakroom

159 High Street, Hornchurch, Essex, RM11 3YD
01708 202 777

hornchurch@durdenandhunt.co.uk
<https://www.durdenandhunt.co.uk>

Vestry Court, 2 Bournebrook Grove, Romford, RM7

Approximate Area = 1197 sq ft / 111.2 sq m
For identification only - Not to scale



Viewings

Viewings by arrangement only. Call 01708 202 777 to make an appointment.

Council Tax Band

C

EPC Rating:

C

Energy Efficiency Rating		Current	Potential
<i>Very energy efficient - lower running costs</i>			
(92 plus) A			
(81-91) B			
(69-80) C		72	72
(55-68) D			
(39-54) E			
(21-38) F			
(1-20) G			
<i>Not energy efficient - higher running costs</i>			
England & Wales		EU Directive 2002/91/EC	