

# DURDEN & HUNT

INTERNATIONAL



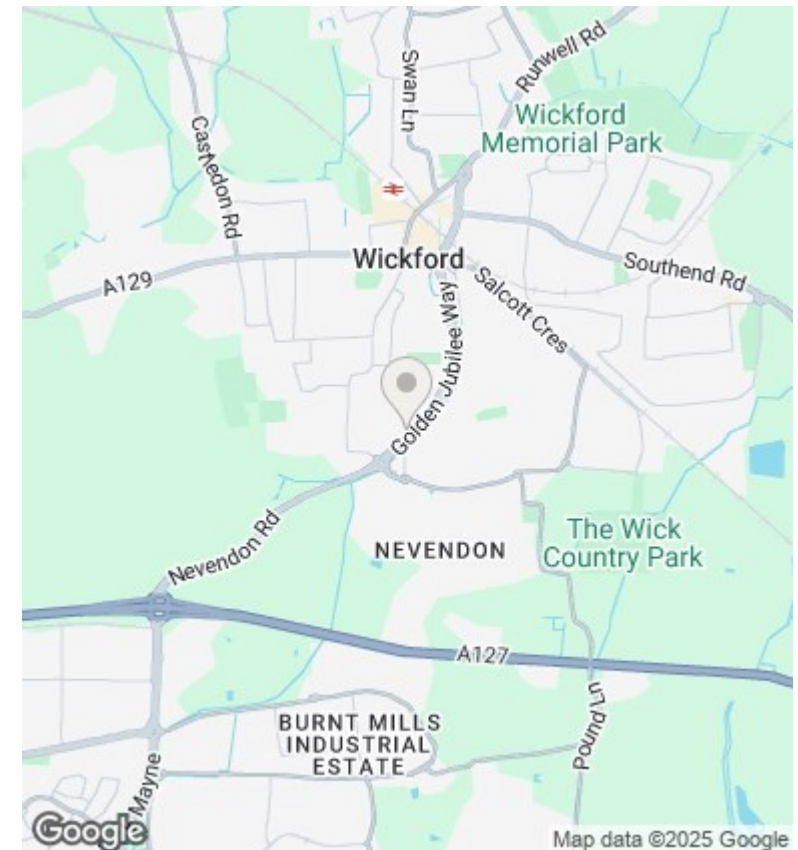
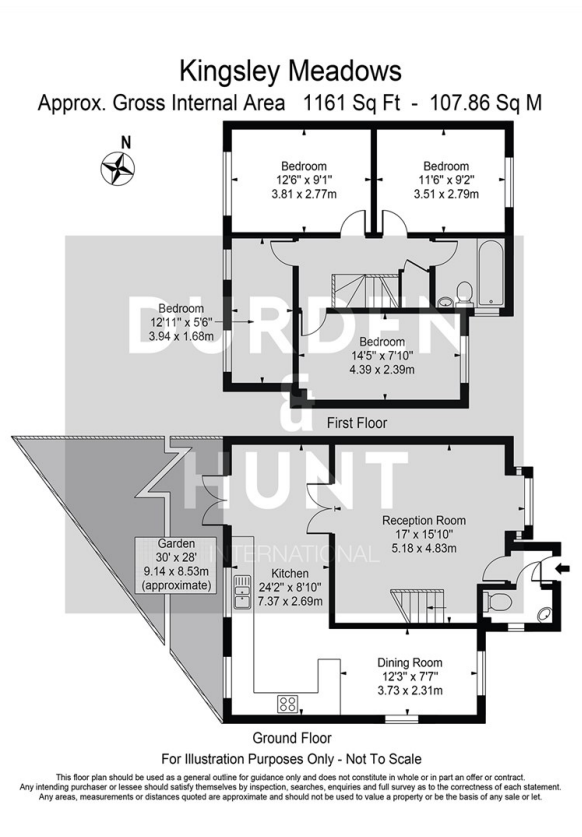
## Kingsley Meadows, Wickford SS12

Guide Price £475,000

- No Onward Chain
- Large Open Plan Kitchen Dining Room
- Private Drive
- Guide Price £475,000 - £515,000
- Downstairs WC
- Excellent Location
- Four Bedrooms
- Spacious Garden
- Family Bathroom

159 High Street, Hornchurch, Essex, RM11 3YD  
01708 202 777

[hornchurch@urdenandhunt.co.uk](mailto:hornchurch@urdenandhunt.co.uk)  
<https://www.durdenandhunt.co.uk>



## Viewings

Viewings by arrangement only. Call 01708 202 777 to make an appointment.

## Council Tax Band

D

## EPC Rating:

C

| Energy Efficiency Rating                    |                         |           |
|---|-------------------------|-----------|
|   | Current                 | Potential |
| Very energy efficient - lower running costs |                         |           |
| (92-plus) <b>A</b>                          |                         |           |
| (81-91) <b>B</b>                            |                         | <b>85</b> |
| (69-80) <b>C</b>                            | <b>75</b>               |           |
| (55-68) <b>D</b>                            |                         |           |
| (39-54) <b>E</b>                            |                         |           |
| (21-38) <b>F</b>                            |                         |           |
| (1-20) <b>G</b>                             |                         |           |
| Not energy efficient - higher running costs |                         |           |
| <b>England &amp; Wales</b>                  | EU Directive 2002/91/EC |           |