

DURDEN & HUNT

INTERNATIONAL



South Street, Romford RM1

Offers In Excess Of £274,000

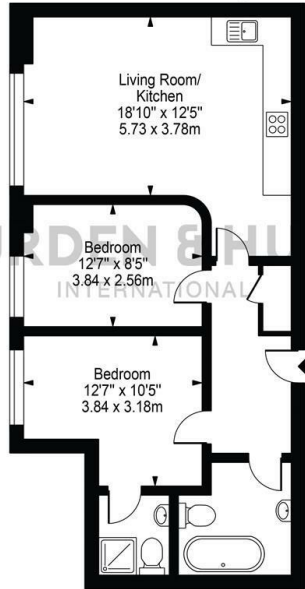
- Modern Two Bedroom Apartment
- Great Transport Links
- Open Plan Living, Dining And Kitchen
- Two Bathrooms
- Ideally Located
- Sleek Flooring Throughout

159 High Street, Hornchurch, Essex, RM11 3YD
01708 202 777

hornchurch@durdenandhunt.co.uk
<https://www.durdenandhunt.co.uk>

Byron Court,
South Street

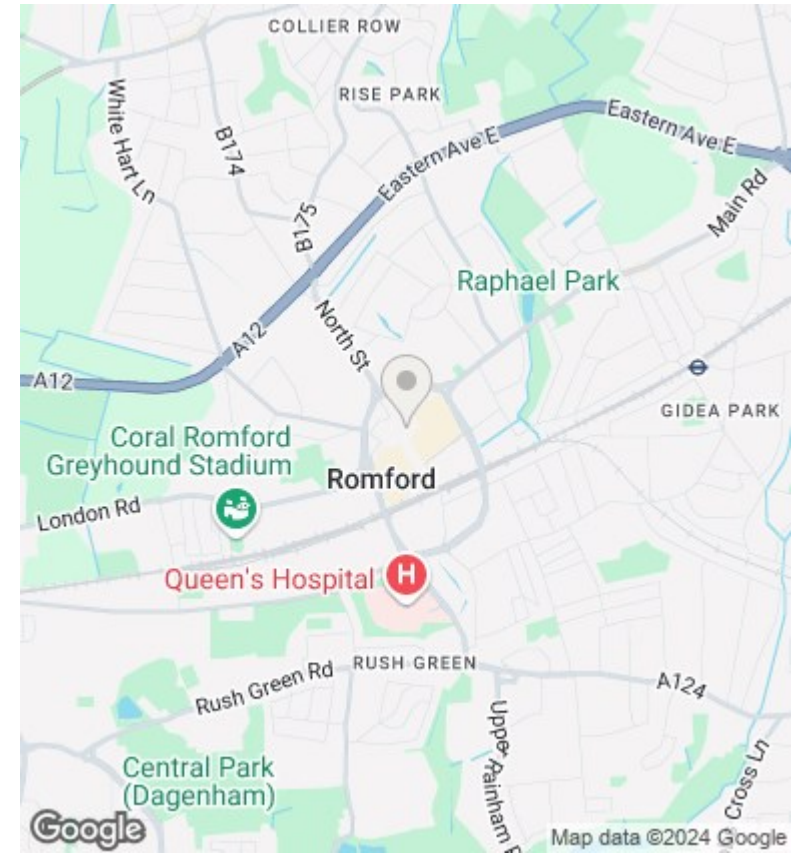
Approx. Gross Internal Area 678 Sq Ft - 62.99 Sq M



DURDEN & HUNT
INTERNATIONAL

First Floor
For Illustration Purposes Only - Not To Scale

This floor plan should be used as a general outline for guidance only and does not constitute in whole or in part an offer or contract. Any intending purchaser or lessee should satisfy themselves by inspection, searches, enquiries and full survey as to the correctness of each statement. Any areas, measurements or distances quoted are approximate and should not be used to value a property or be the basis of any sale or let.



Viewings

Viewings by arrangement only. Call 01708 202 777 to make an appointment.

Council Tax Band

C

EPC Rating:

D

Energy Efficiency Rating		Current	Potential
<i>Very energy efficient - lower running costs</i>			
(92 plus) A			
(81-91) B			
(69-80) C			
(55-68) D		56	63
(39-54) E			
(21-38) F			
(1-20) G			
<i>Not energy efficient - higher running costs</i>			
England & Wales		EU Directive 2002/91/EC	