

DURDEN & HUNT

INTERNATIONAL



Wideford Drive, Romford RM7

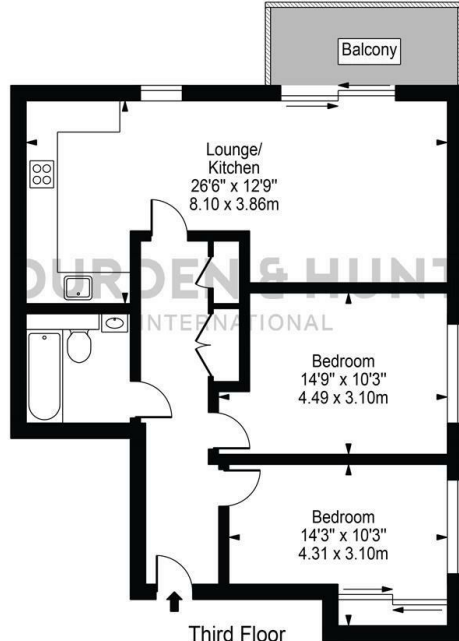
£315,000

- Open Plan Apartment
- Two Well Sized Bedrooms
- Great Transport Links
- Tastefully Decorated Throughout
- Allocated Underground Parking Space
- Good Location
- Balcony Access
- Beautifully Fitted Kitchen

159 High Street, Hornchurch, Essex, RM11 3YD
01708 202 777

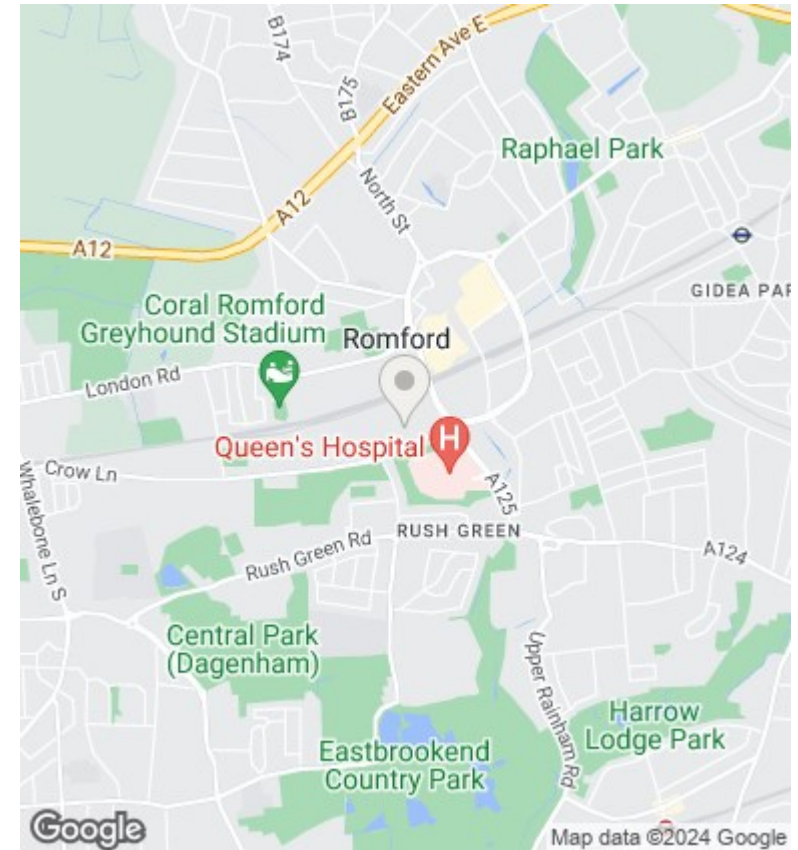
hornchurch@durdenandhunt.co.uk
<https://www.durdenandhunt.co.uk>

Priory Court
 Approx. Gross Internal Area 752 Sq Ft - 69.88 Sq M



Third Floor
 For Illustration Purposes Only - Not To Scale

This floor plan should be used as a general outline for guidance only and does not constitute in whole or in part an offer or contract. Any intending purchaser or lessee should satisfy themselves by inspection, searches, enquiries and full survey as to the correctness of each statement. Any areas, measurements or distances quoted are approximate and should not be used to value a property or be the basis of any sale or let.



Viewings

Viewings by arrangement only. Call 01708 202 777 to make an appointment.

Council Tax Band

C

EPC Rating:

B

| Energy Efficiency Rating | | Current | Potential |
|--|--|-------------------------|-----------|
| <i>Very energy efficient - lower running costs</i> | | | |
| (92 plus) A | | | |
| (81-91) B | | 86 | 86 |
| (69-80) C | | | |
| (55-68) D | | | |
| (39-54) E | | | |
| (21-38) F | | | |
| (1-20) G | | | |
| <i>Not energy efficient - higher running costs</i> | | | |
| England & Wales | | EU Directive 2002/91/EC | |