

DURDEN & HUNT

INTERNATIONAL



Kidman Close, Romford RM2

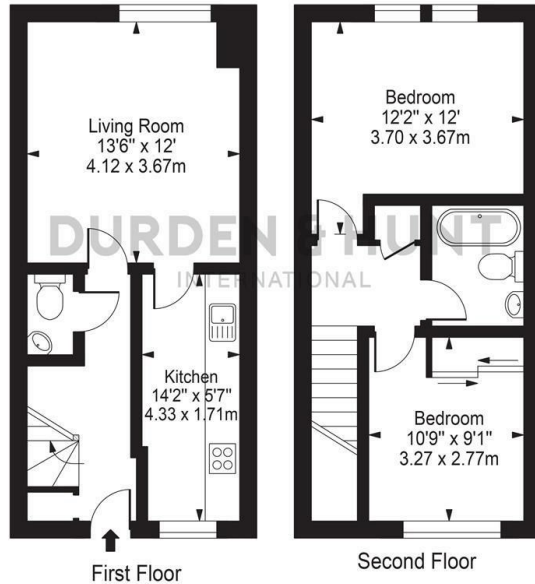
Offers In Excess Of £325,000

- First Floor Split Level Apartment
- Two Bedrooms And One Bathroom
- Downstairs WC
- Allocated Parking Space
- Modern Galley Style Kitchen
- Great Location
- Flexible Living Room
- Tastefully Decorated Throughout
- Excellent Transport Links

159 High Street, Hornchurch, Essex, RM11 3YD
01708 202 777

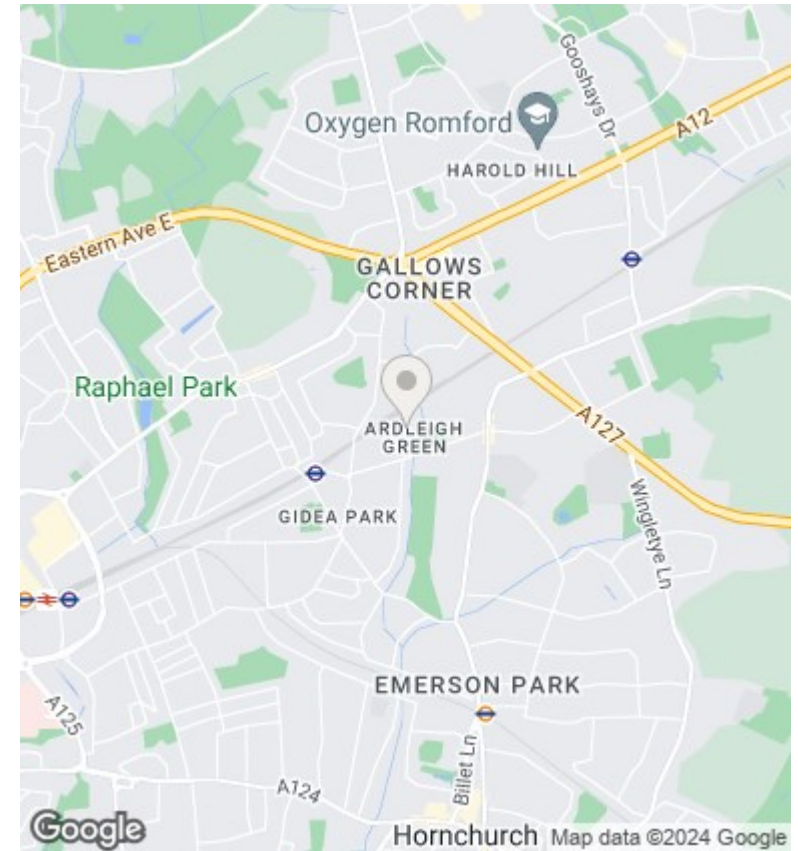
hornchurch@durdenandhunt.co.uk
<https://www.durdenandhunt.co.uk>

North Block,
Kidman Close
Approx. Gross Internal Area 690 Sq Ft - 64.06 Sq M



For Illustration Purposes Only - Not To Scale

This floor plan should be used as a general outline for guidance only and does not constitute in whole or in part an offer or contract. Any intending purchaser or lessee should satisfy themselves by inspection, searches, enquiries and full survey as to the correctness of each statement. Any areas, measurements or distances quoted are approximate and should not be used to value a property or be the basis of any sale or let.



Viewings

Viewings by arrangement only. Call 01708 202 777 to make an appointment.

Council Tax Band

D

EPC Rating:

B

Energy Efficiency Rating		
	Current	Potential
Very energy efficient - lower running costs		
(92 plus) A		
(81-91) B	81	81
(69-80) C		
(55-68) D		
(39-54) E		
(21-38) F		
(1-20) G		
Not energy efficient - higher running costs		
England & Wales	EU Directive 2002/91/EC	