

DURDEN & HUNT

INTERNATIONAL



Amersham Road, Harold Hill RM3

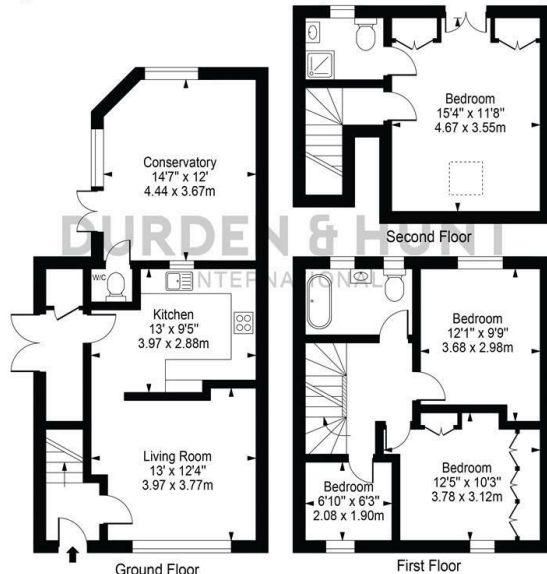
£500,000

- Great Condition
- Sleek Kitchen
- Three Additional Bedrooms
- Good Transport Links
- Off Street Parking
- Large Living Room
- Modern Family Bathroom
- Contemporary Garden
- Primary Bedroom With En Suite
- Conservatory With Downstairs WC

159 High Street, Hornchurch, Essex, RM11 3YD
01708 202 777

hornchurch@durdenandhunt.co.uk
<https://www.durdenandhunt.co.uk>

Amersham Road
 Approx. Total Internal Area 1196 Sq Ft - 111.09 Sq M
 (Including Conservatory & W/C)
 Approx. Gross Internal Area Of Conservatory & W/C 181 Sq Ft - 16.82 Sq M



For Illustration Purposes Only - Not To Scale

This floor plan should be used as a general outline for guidance only and does not constitute in whole or in part an offer or contract. Any intending purchaser or lessee should satisfy themselves by inspection, searches, enquiries and full survey as to the correctness of each statement. Any areas, measurements or distances quoted are approximate and should not be used to value a property or be the basis of any sale or let.

Viewings

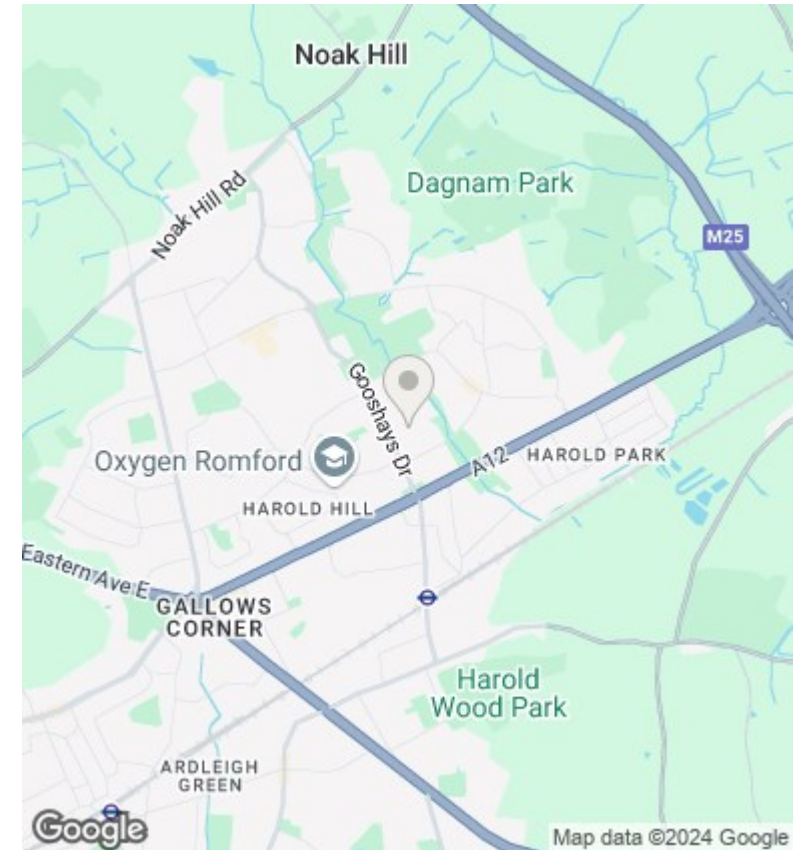
Viewings by arrangement only. Call 01708 202 777 to make an appointment.

Council Tax Band

C

EPC Rating:

D



Energy Efficiency Rating		Current	Potential
<i>Very energy efficient - lower running costs</i>			
(92 plus) A			
(81-91) B			75
(69-80) C			
(55-68) D		60	
(39-54) E			
(21-38) F			
(1-20) G			
<i>Not energy efficient - higher running costs</i>			
England & Wales		EU Directive 2002/91/EC	