

# DURDEN & HUNT

INTERNATIONAL



## Ravensbourne Crescent, Harold Wood RM3

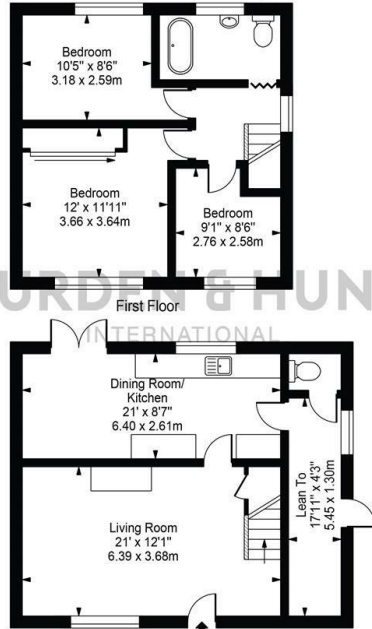
Offers Over £400,000

- Non Standard Construction
- Spacious Living Room
- Large Rear Garden
- Three Bedroom
- Large Kitchen With Space To Dine In
- Planning permission has been passed for a sizeable extension under reference P1250.23 With London Borough Of Havering.
- Semi Detached
- Driveway

159 High Street, Hornchurch, Essex, RM11 3YD  
01708 202 777

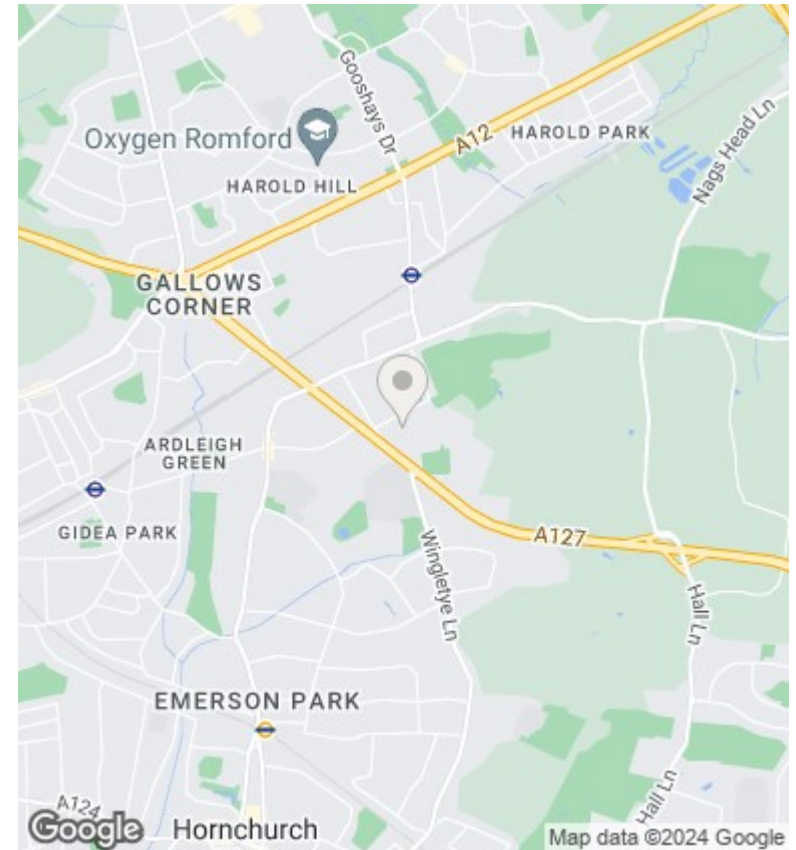
hornchurch@durdenandhunt.co.uk  
<https://www.durdenandhunt.co.uk>

**Ravensbourne Crescent**  
 Approx. Gross Internal Area 1001 Sq Ft - 92.95 Sq M



For Illustration Purposes Only - Not To Scale

This floor plan should be used as a general outline for guidance only and does not constitute in whole or in part an offer or contract. Any intending purchaser or lessee should satisfy themselves by inspection, searches, enquiries and full survey as to the correctness of each statement. Any areas, measurements or distances quoted are approximate and should not be used to value a property or be the basis of any sale or let.



### Viewings

Viewings by arrangement only. Call 01708 202 777 to make an appointment.

### Council Tax Band

B

### EPC Rating:

D

Energy Efficiency Rating		Current	Potential
<i>Very energy efficient - lower running costs</i>			
(92 plus)	A		
(81-91)	B		78
(69-80)	C	65	
(55-68)	D		
(39-54)	E		
(21-38)	F		
(1-20)	G		
<i>Not energy efficient - higher running costs</i>			
<b>England &amp; Wales</b>		EU Directive 2002/91/EC	