

DURDEN & HUNT

INTERNATIONAL



Stafford Avenue, Hornchurch RM11

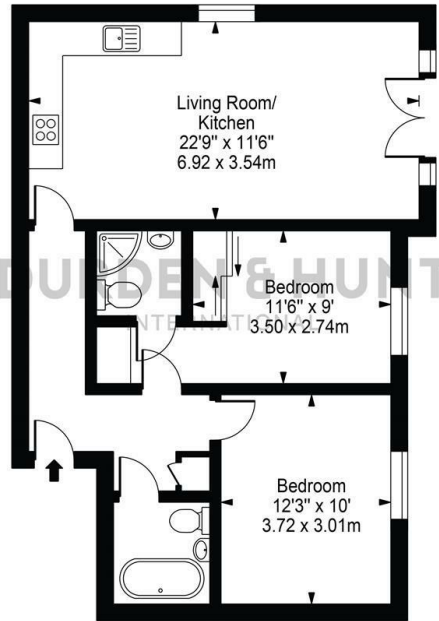
Offers In Excess Of £325,000

- Top Floor Apartment
- Additional Bedroom
- Allocated Parking
- Spacious Open Plan Kitchen And Living Room
- Family Bathroom
- Excellent Transport Links
- Master Bedroom With En Suite And Fitted Wardrobe
- Communal Garden

159 High Street, Hornchurch, Essex, RM11 3YD
01277282222

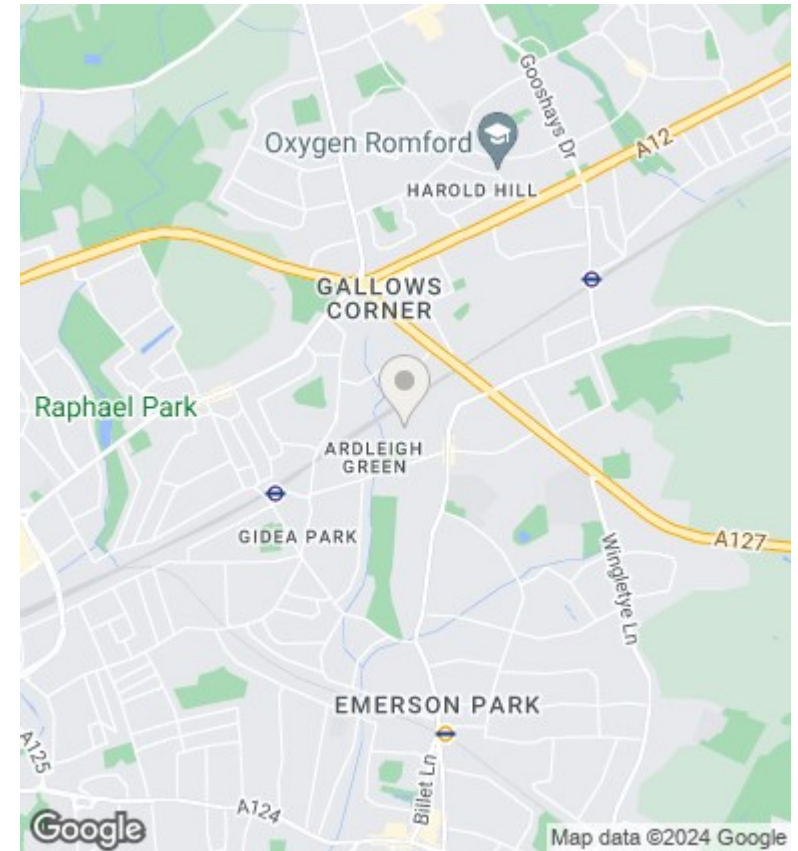
lettings@durdenandhunt.co.uk
<https://www.durdenandhunt.co.uk>

Southwood Court
 Approx. Gross Internal Area 685 Sq Ft - 63.62 Sq M



Second Floor
 For Illustration Purposes Only - Not To Scale

This floor plan should be used as a general outline for guidance only and does not constitute in whole or in part an offer or contract. Any intending purchaser or lessee should satisfy themselves by inspection, searches, enquiries and full survey as to the correctness of each statement. Any areas, measurements or distances quoted are approximate and should not be used to value a property or be the basis of any sale or let.



Viewings

Viewings by arrangement only.
 Call 01277282222 to make an appointment.

Council Tax Band

C

EPC Rating:

B

Energy Efficiency Rating		Current	Potential
<i>Very energy efficient - lower running costs</i>			
(92 plus) A			
(81-91) B		86	86
(69-80) C			
(55-68) D			
(39-54) E			
(21-38) F			
(1-20) G			
<i>Not energy efficient - higher running costs</i>			
England & Wales		EU Directive 2002/91/EC	