

DURDEN & HUNT

INTERNATIONAL

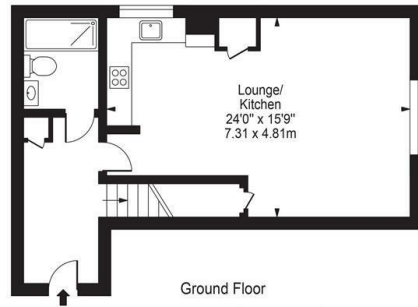
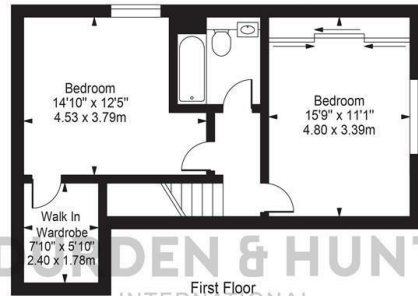


Kidman Close, Romford RM2

Offers In Excess Of £360,000

- Over 1,000sqft
- Excellent Transport Links
- Master Bedroom With Walk In Wardrobe Area
- Sought After Development
- Allocated Parking Space
- Second Bedroom With Fitted Wardrobes
- Split Level Apartment
- Open Plan Kitchen, Living And Dining Room
- Two Bathrooms

North Block,
Kidman Close
Approx. Gross Internal Area 1023 Sq Ft - 95.04 Sq M



For Illustration Purposes Only - Not To Scale

This floor plan should be used as a general outline for guidance only and does not constitute in whole or in part an offer or contract. Any intending purchaser or lessee should satisfy themselves by inspection, searches, enquiries and full survey as to the correctness of each statement. Any areas, measurements or distances quoted are approximate and should not be used to value a property or be the basis of any sale or let.

Viewings

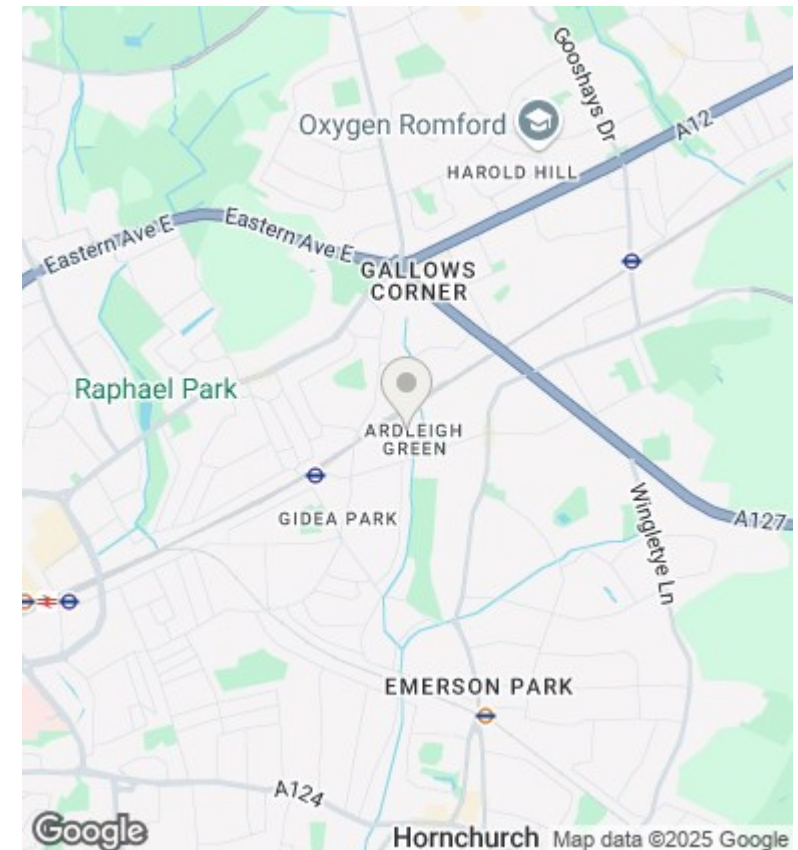
Viewings by arrangement only. Call 01708 202 777 to make an appointment.

Council Tax Band

D

EPC Rating:

C



Energy Efficiency Rating		
	Current	Potential
Very energy efficient - lower running costs		
(92 plus) A		
(81-91) B	78	80
(69-80) C		
(55-68) D		
(39-54) E		
(21-38) F		
(1-20) G		
Not energy efficient - higher running costs		
England & Wales	EU Directive 2002/91/EC	