

# DURDEN & HUNT

INTERNATIONAL



## Kidman Close, Romford RM2

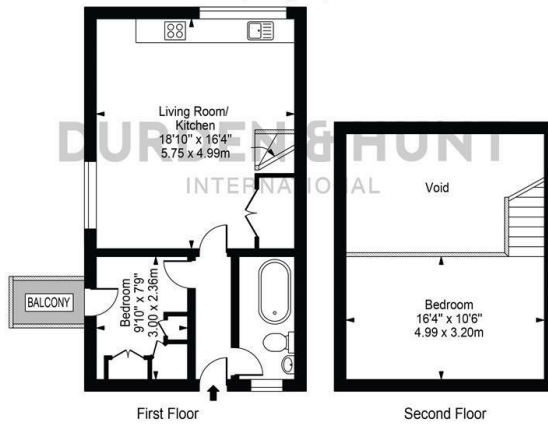
Price Guide £300,000

- Excellent Transport Links
- Private Balcony
- Contemporary Bathroom
- Sought After Development
- Open Plan Kitchen
- Allocated Parking Space
- Two Bedrooms

159 High Street, Hornchurch, Essex, RM11 3YD  
01708 202 777

hornchurch@durdenandhunt.co.uk  
<https://www.durdenandhunt.co.uk>

The Railstore,  
North Block  
Approx. Gross Internal Area 673 Sq Ft - 62.49 Sq M  
(Excluding Void)



This floor plan should be used as a general outline for guidance only and does not constitute in whole or in part an offer or contract. Any intending purchaser or lessee should satisfy themselves by inspection, searches, enquiries and full survey as to the correctness of each statement. Any areas, measurements or distances quoted are approximate and should not be used to value a property or be the basis of any sale or let.

### Viewings

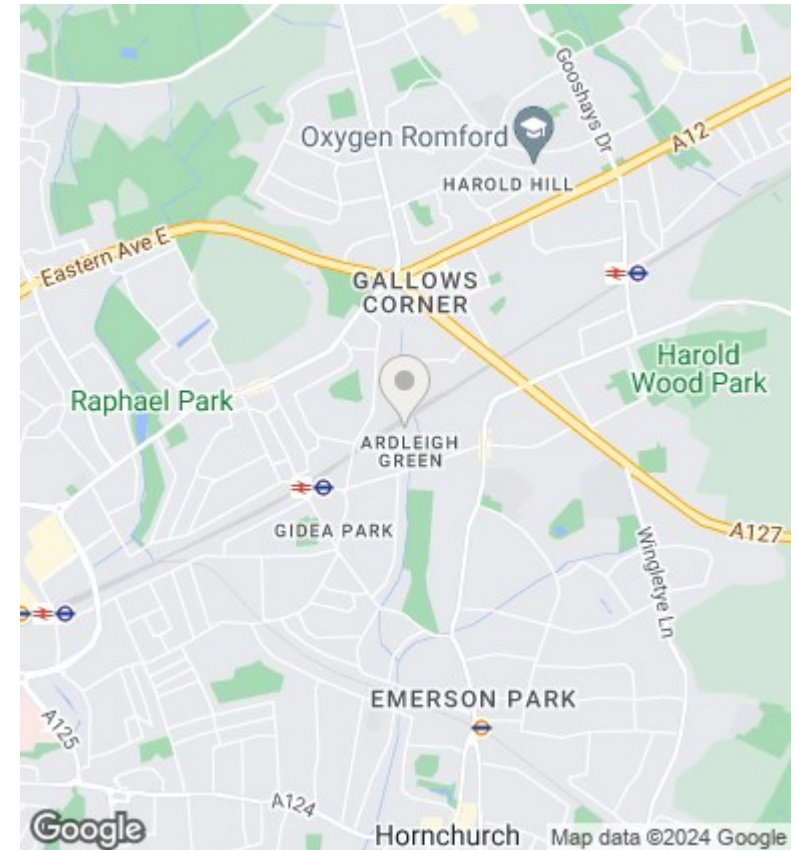
Viewings by arrangement only. Call 01708 202 777 to make an appointment.

### Council Tax Band

C

### EPC Rating:

E



Energy Efficiency Rating		Current	Potential
<i>Very energy efficient - lower running costs</i>			
(92 plus)	A		
(81-91)	B		
(69-80)	C		72
(55-68)	D	52	
(39-54)	E		
(21-38)	F		
(1-20)	G		
<i>Not energy efficient - higher running costs</i>			
<b>England &amp; Wales</b>		EU Directive 2002/91/EC	