



Living
made
better

Galba Court
Brentford, TW8 8QS



Asking Price £500,000

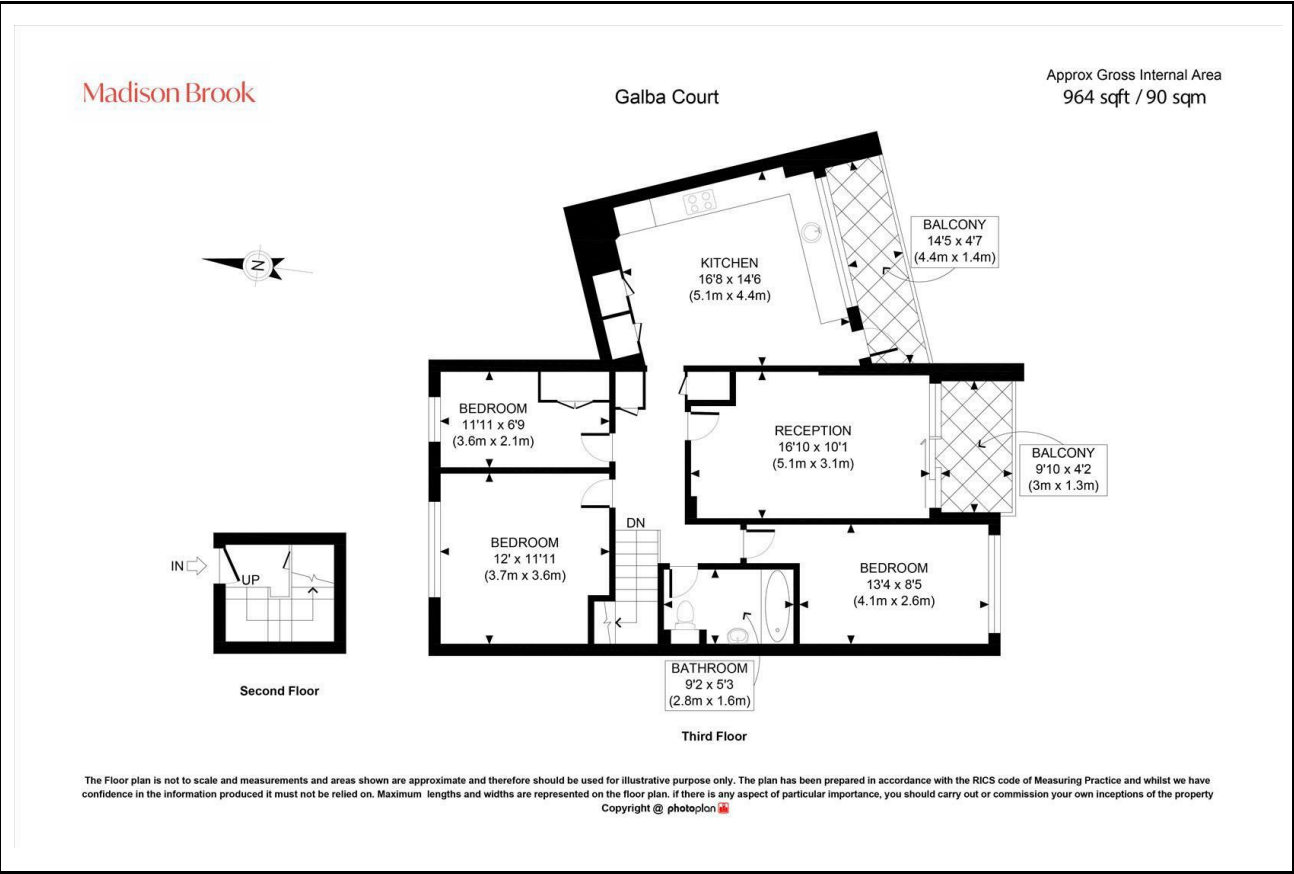
Galba Court, Brentford, TW8 8QS

Madison Brook

Property Summary

Set across the second and third floors of Galba Court, this rarely available three-bedroom duplex offers 964 sq. ft. and one of the development's most desirable floorplans, featuring a larger-than-average kitchen and two south-facing balconies overlooking Syon Park. The property includes a bright reception room, a separate integrated kitchen, well-proportioned bedrooms, and excellent internal storage, plus a large external storage cupboard. Residents enjoy extensive private communal gardens, marina access with riverside BBQ and picnic areas, and direct access to Syon Park. The service charge includes heating, hot water, 24-hour security, and grounds maintenance, with the estate managed by a board of resident-elected directors, ensuring a community-focused environment.

Floorplan

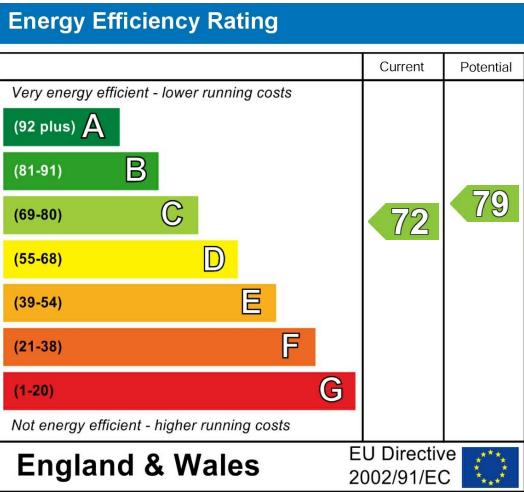


These particulars, whilst believed to be accurate are set out as a general outline only for guidance and do not constitute any part of an offer or contract. Intending purchasers should not rely on them as statements of representation of fact, but must satisfy themselves by inspection or otherwise as to their accuracy. No person in this firm's employment has the authority to make or give any representation or warranty in respect of the property.

Area Map



Energy Efficiency Graph



181 Chiswick High Road, Chiswick, London, W4
2DR

Tel: 020 3946 6600 Email:
chiswick@madisonbrook.com
<https://madisonbrook.com/>