



Living  
made  
better

India Way  
Roehampton, SW15 5FE



Asking Price £1,200,000

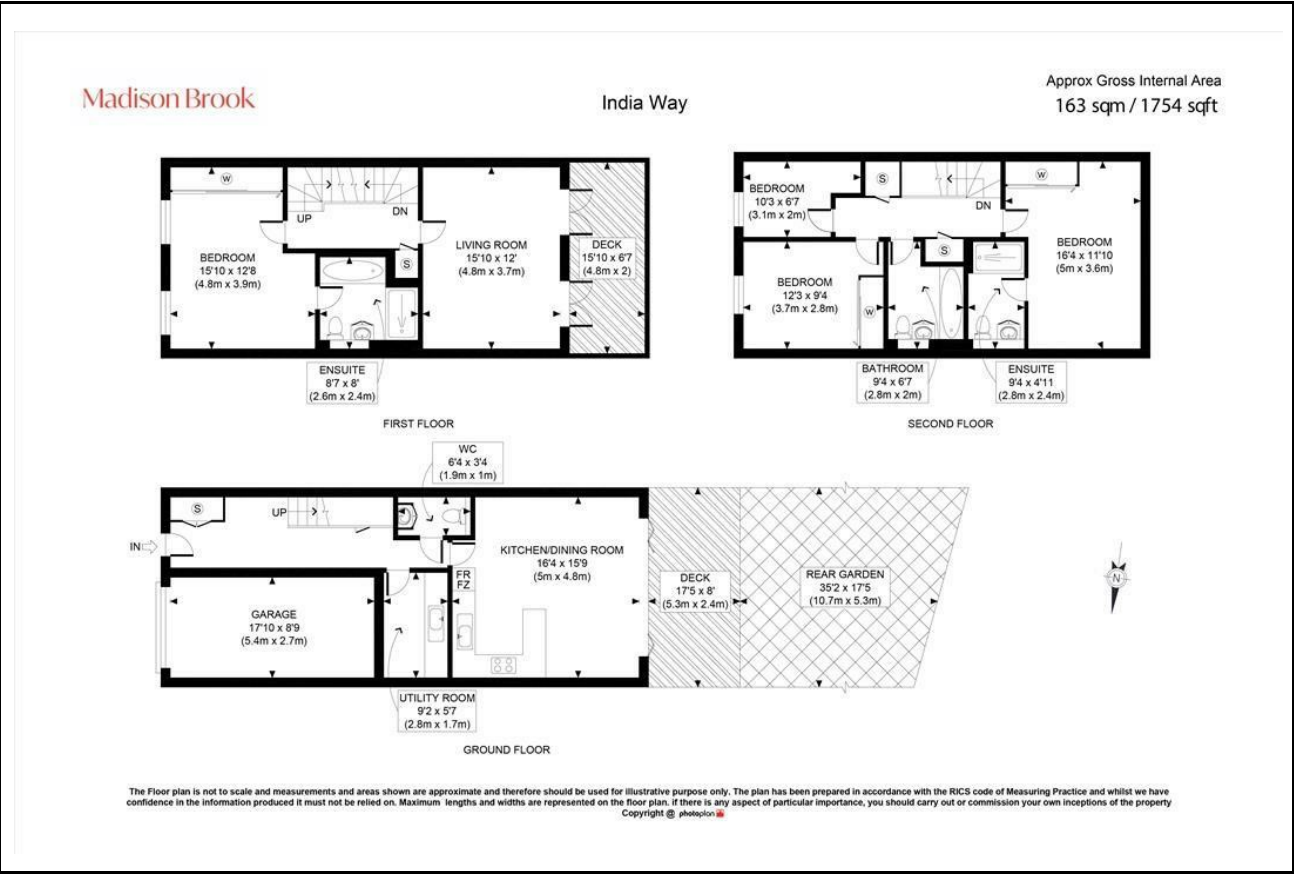


# India Way, Roehampton, SW15 5FE

## Property Summary

This impressive four-bedroom townhouse in Roehampton offers contemporary living across three spacious floors, featuring approximately 1,754 sq ft of well-appointed accommodation. The ground floor boasts an open-plan kitchen/dining area with bi-fold doors to a private garden, utility room, cloakroom, garage, and off-street parking. On the first floor, a bright reception room opens onto a delightful terrace, complemented by the spacious master bedroom suite. The second floor provides three additional bedrooms and two bathrooms (one en-suite). Beautifully presented and close to Richmond Park, Putney Heath, local amenities, and transport links, this home suits families seeking quality living in a desirable location. Service Charge: approx £2,600 pa

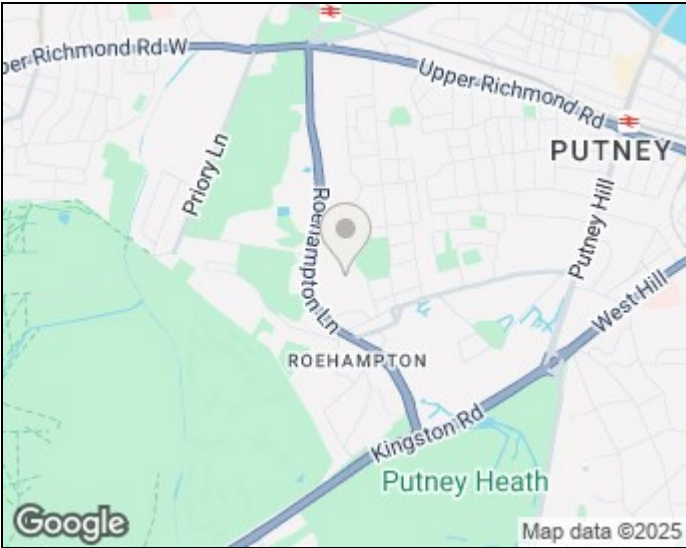
## Floorplan



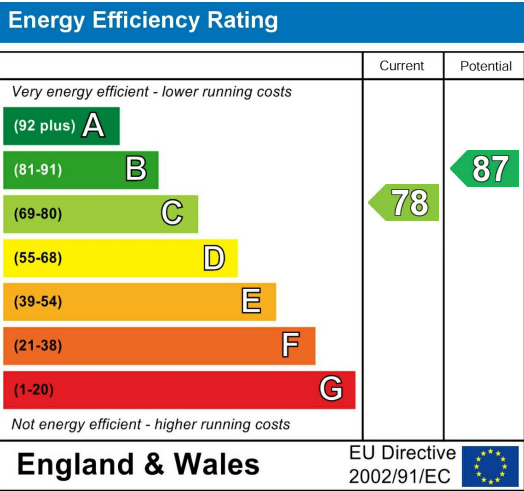
These particulars, whilst believed to be accurate are set out as a general outline only for guidance and do not constitute any part of an offer or contract. Intending purchasers should not rely on them as statements of representation of fact, but must satisfy themselves by inspection or otherwise as to their accuracy. No person in this firm's employment has the authority to make or give any representation or warranty in respect of the property.

Madison Brook

## Area Map



## Energy Efficiency Graph



181 Chiswick High Road, Chiswick, London, W4  
2DR

Tel: 020 3946 6600 Email:  
chiswick@madisonbrook.com  
<https://madisonbrook.com/>