



Living
made
better

Whitehall Park Road
Chiswick, W4 3NB



Asking Price £1,500,000

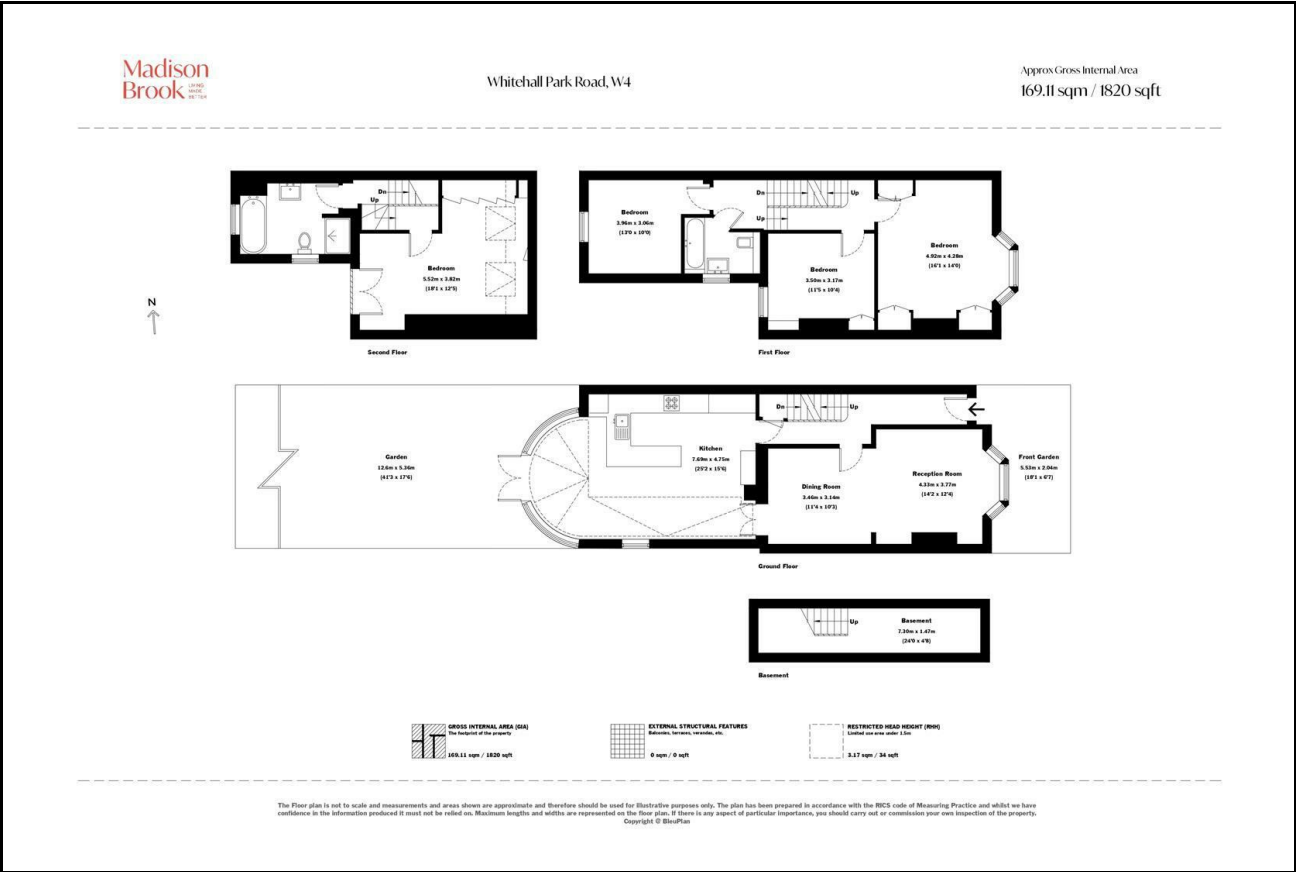
Whitehall Park Road, Chiswick, W4 3NB

Madison Brook

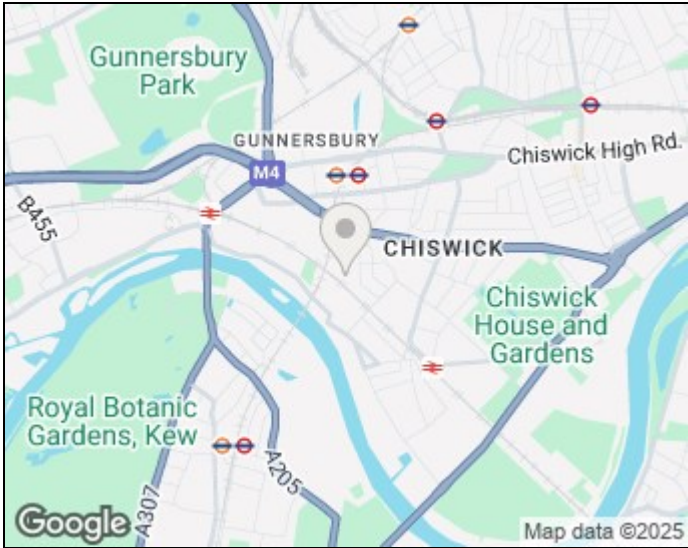
Property Summary

Set in the leafy heart of Grove Park, this extended four-bedroom period home perfectly balances character and modern design. The centrepiece is a spectacular kitchen and dining space with a glass ceiling and exposed brick wall, creating a light-filled hub ideal for entertaining. A bespoke shaker kitchen, premium appliances, and a central island complete the scene, flowing out to a large west-facing garden.

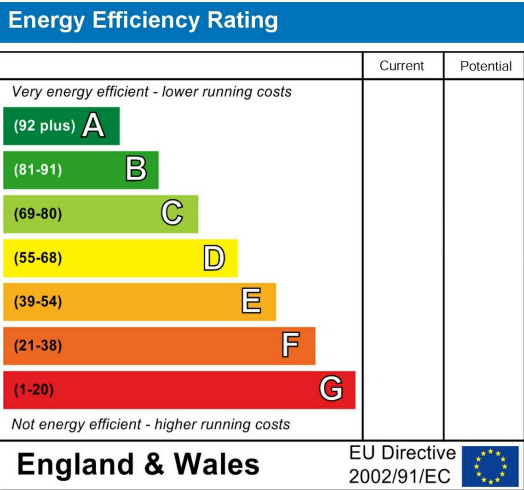
Floorplan



Area Map



Energy Efficiency Graph



These particulars, whilst believed to be accurate are set out as a general outline only for guidance and do not constitute any part of an offer or contract. Intending purchasers should not rely on them as statements of representation of fact, but must satisfy themselves by inspection or otherwise as to their accuracy. No person in this firm's employment has the authority to make or give any representation or warranty in respect of the property.

181 Chiswick High Road, Chiswick, London, W4
2DR

Tel: 020 3946 6600 Email:
chiswick@madisonbrook.com
<https://madisonbrook.com/>