











## About the property

Welcome to 7 St Georges Avenue, a stunning property nestled in the heart of the desirable Olde Ealing. This newly refurbished family home offers a perfect combination of period Edwardian features and well-lit modern interiors, creating a truly captivating living experience.

Spread over c.1,700sqft, this spacious residence boasts 4 bedrooms and 2 bathrooms, accompanied by an additional water closet.

Step inside and be greeted by an abundance of natural light that fills every corner of the home, and a lovely kitchen complete with modern appliances, ample cupboard storage, and an abundance of preparation space. It's semi open-plan with the dining room, making it perfect for entertaining. The owners comfortably had an eight seater dining table, frequently used for family gatherings when it was their home.

Adjacent to the kitchen, a beautiful conservatory invites you to relax and enjoy the serene views of the private garden which is home to a cherry blossom tree that's particularly beautiful in Spring.

## Key features

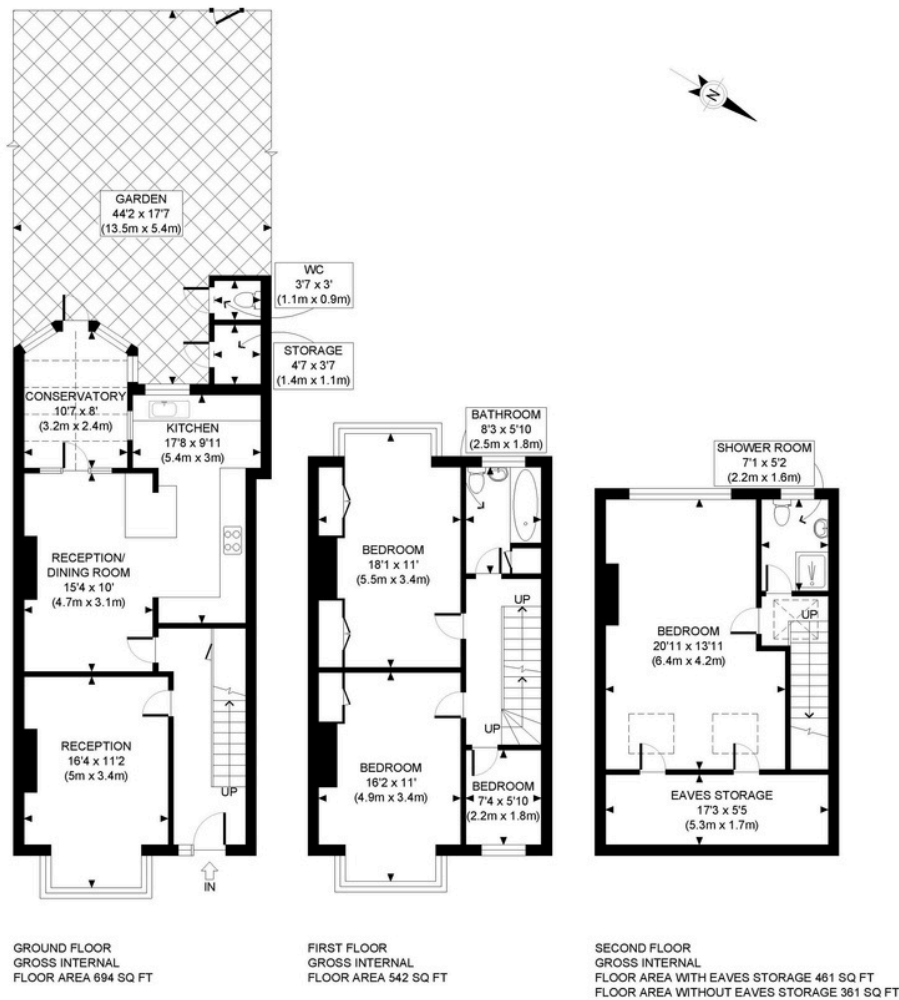
- Available now
- 4 bedrooms
- 2 bathrooms
- Additional WC
- Circa 1,700 sq ft
- Fantastic Family Home
- Gorgeous Garden
- Newly Refurbished
- Optimum Olde Ealing location
- Terrific for Transport links, Train, Tube & Road
- Ealing Broadway (Elizabeth Line, Central Line, District Line)
- South Ealing (Piccadilly)
- Perfect for the Parks - Lammas & Walpole
- Superb for local schools
- Period Edwardian Features
- Permit Parking
- Unfurnished

## Material information

- Council Tax - **Band F**
- Guide Price - **£4,000 PCM**



**PAUL LESLIE**  
 Director  
 020 3488 6445  
 07738 401 822  
 paul@leslieandcompanyuk.com



APPROX. GROSS INTERNAL FLOOR AREA WITH WITH EAVES STORAGE: 1697 SQ FT/ 158 SQM  
 APPROX. GROSS INTERNAL FLOOR AREA WITHOUT WITH EAVES STORAGE: 1597 SQ FT/ 148 SQM

**PROPERTY PHOTO PLANS**.CO.UK  
 ONE STOP SHOP FOR PROPERTY MARKETING

This plan is for illustrative purposes only and should be used as such by any prospective client. Whilst every attempt has been made to ensure the accuracy of the Floor Plan contained here, measurements of the doors, windows, rooms and any other items are approximate and no responsibility is taken for any errors, omissions, or misstatement.

