




LESLIE & CO

WILTON AVENUE, CHISWICK, LONDON, W4

Guide Price: **£1,250,000**



 Leslie & Co





About the property

Nestled on a tranquil, leafy street in the highly sought-after area of Chiswick, this charming period family home on Wilton Avenue offers a delightful blend of classic elegance and modern comfort, perfect for first-time buyers and up sizers alike.

Upon entering this enchanting terraced house, you'll be captivated by its original features, which have been lovingly preserved to create a warm and inviting atmosphere. Three generous bedrooms promise ample space for a growing family or a home office setup, catering to the new work-from-home culture.

The heart of this home is undoubtedly the newly refurbished kitchen, boasting contemporary fixtures and finishes, providing a stylish yet functional space to cook and entertain guests. The airy bathroom, ensures a tranquil retreat for busy mornings or leisurely evenings.



Key features

- Beautiful Family Home
- Potential To Extend (STPP)
- Three Generous Bedrooms
- Lovely Period Features
- Private Garden
- Excellent Schools Nearby
- No through road

Material information

- Tenure - **Freehold**
- Council Tax - **Band G**
- Guide Price - **£1,250,000**



PAUL LESLIE

Director
020 3488 6445
07738 401 822
paul@leslieandcompanyuk.com

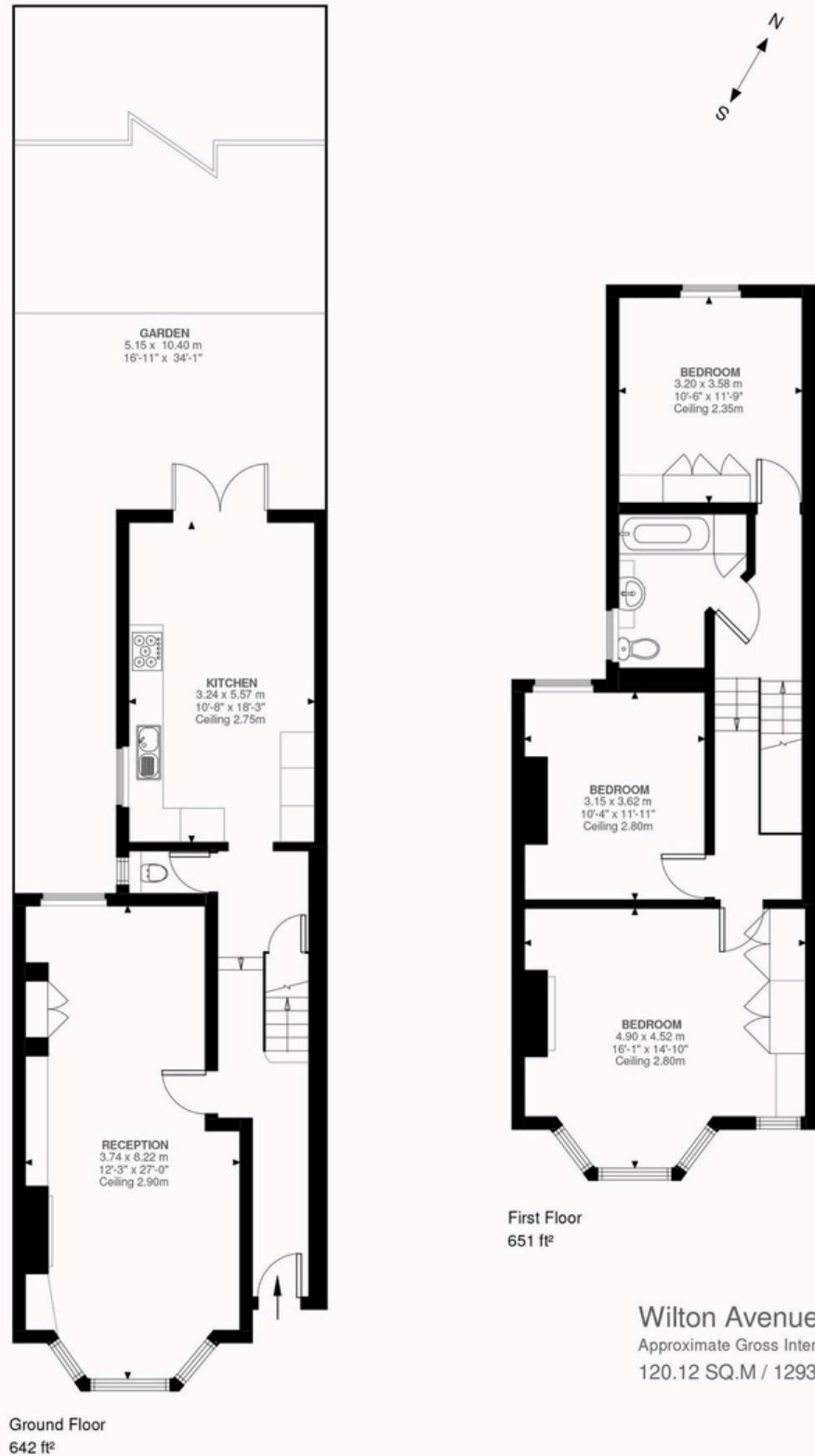


Illustration for identification purposes only. Not to scale.

