

**Flat 13, 9 Handyside
Place
Edinburgh EH11 1ZH
Fixed price £315,000**

- Large open plan living/kitchen/dining room with access to private balcony
- Kitchen fitted with a range of floor and wall mounted units, gas hob and electric oven and integrated appliances included in
- Stunning Amtico flooring throughout the property
- Three double bedrooms with master featuring en-suite
- Family bathroom fitted with three-piece suite and mains shower walk in shower
- Hallway with three storage cupboards
- Gas central heating and double glazing throughout
- Well kept communal gardens
- Secure undercroft parking



1



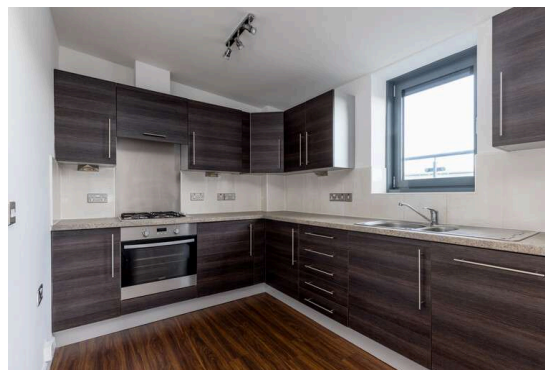
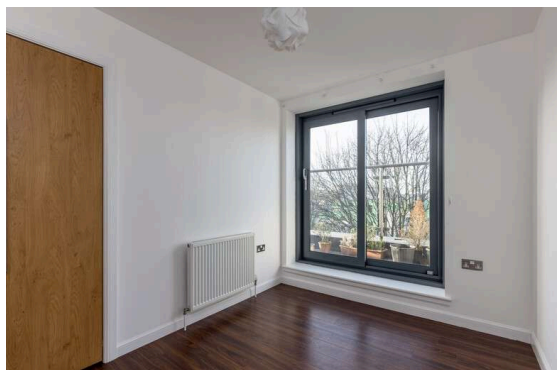
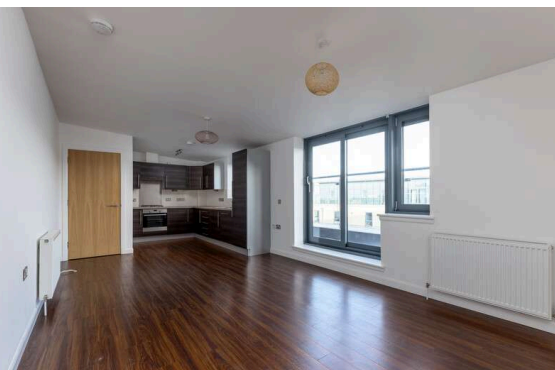
3



2



EPC B



Top Floor Flat

Blair Cadell are delighted to bring to market this fantastic modern flat ideally placed for swift access to the city centre. With generous living space, lift access, private patio and lovely finishes including stunning Amtico flooring throughout, the property is in turn key condition and would be ideal for a range of different buyers and must be viewed.

The accomodation comprises of a large entrance hallway with three useful storage cupboards. The open plan living area is the perfect place for relaxing with friends and family. This also benefits from access to a private balcony through double doors that is an ideal suntrap. There is a stylish kitchen which has a sleek finish and features a range of wall and floor mounted units, gas hob and electric oven along with integrated appliances. There are three double bedrooms with two featuring fitted wardrobes offering plenty of useful storage space. The master bedroom features direct access to a rear balcony and an en-suite with electric walk in shower and two-piece suite. There is a large family bathroom with a three-piece suite and mains walk in shower. Gas central heating and double glazing throughout for maximum efficiency. There are beautifully kept communal gardens, secure undercroft parking with both allocated and visitor spaces, lift to all levels and a secure entry system.

Handyside Place is on the southwest side of the city centre and has easy access to an excellent range of public transport services. This includes frequent buses into the city centre and both Haymarket and Slateford train stations within walking distance which provide transport links to Glasgow, Livingston and the surrounding areas. The bypass is a short drive away and leads to the central belt motorway network and the International Airport. Shopping facilities include the recently opened Edinburgh West Retail Park, a Sainsbury's superstore and a 24hr ASDA. Recreational facilities include the Corn Exchange Village, a couple of gyms such as Nuffield Health and Pure Gym, walks along the Union Canal and Water of Leith Walkway and a number of popular bars and restaurants all within easy access

Viewing by appointment on 0131 337 1800

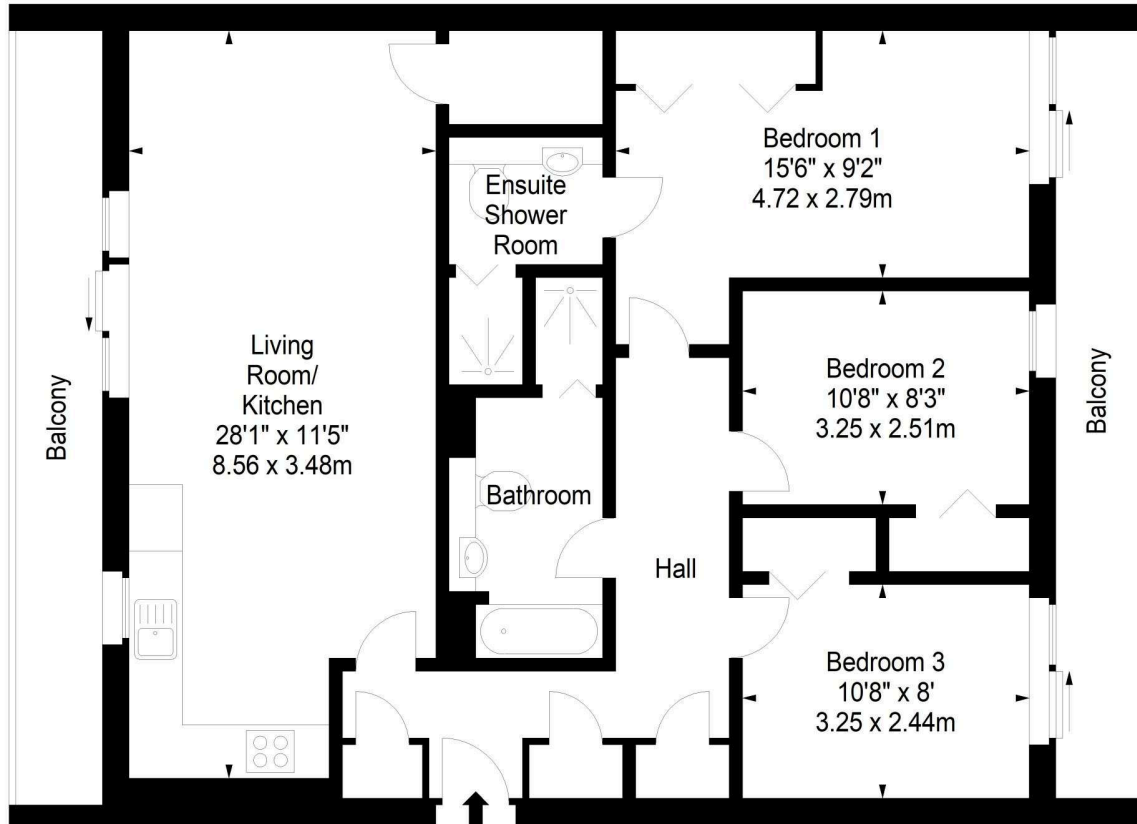




Handyside Place,
Edinburgh,
Midlothian, EH11 1ZH



Approx. Gross Internal Area
977 Sq Ft - 90.76 Sq M
For identification only. Not to scale.
© SquareFoot 2023



Fourth Floor



Property Centre:
1 Harrison Gardens
Edinburgh EH11 3NA
Tel: 0131 337 1800
Fax: 0131 337 1118

DX ED 92, Edinburgh
E-mail: property@blaircadell.com
www.blaircadell.com

