



Moat Close, Leicester, LE9 9PY

**SHELDON  
BOSLEY  
KNIGHT**

LAND AND  
PROPERTY  
PROFESSIONALS

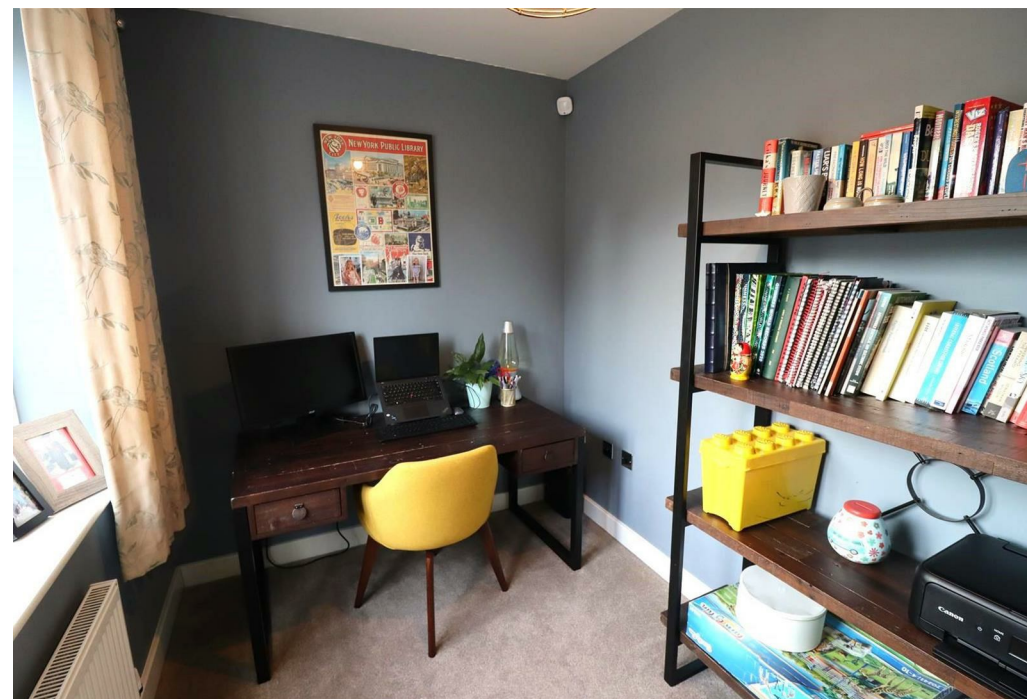


# Property Description

\*\*\*AVAILABLE SEPTEMBER \*\*\* DEPOSIT ALTERNATIVE AVAILABLE \*\*\*This beautifully presented four bedroom, detached family home located in the desirable area of Newbold Verdon is now available to rent. Newbold Verdon is a well-placed and superbly equipped village approximately 4 miles from the historic town of Market Bosworth and 10 miles from the city of Leicester. The wide range of amenities include a primary school, doctors' surgery, pharmacy, grocery store and a selection of eateries. The property comprises of entrance hallway, large kitchen diner with integrated fridge/freezer and dishwasher, utility room with washing machine, spacious living room, snug/play room, home office and downstairs WC. Upstairs, you will find three double bedrooms, two of them boasting modern en-suites and a further single bedroom. There is a spacious landing area and family bathroom. The property benefits from a double garage and off road parking for multiple vehicles, as well as a lovely rear garden with patio area. Viewing is highly recommended for this stunning home to be fully appreciated so call now on 02476 374949 to book your viewing.











## Key Features

- Available September
- Detached family home
- Deposit alternative available
- Sought after village location
- Spacious breakfast kitchen
- Two reception rooms and home office
- Four double bedrooms
- Two En-Suite Shower Rooms + Family Bathroom
- Double garage, large drive and garden
- EPC C & Council tax band E

**£1,600 PCM**