



Harvest Way, Nuneaton, CV10 0FJ

**SHELDON  
BOSLEY  
KNIGHT**

LAND AND  
PROPERTY  
PROFESSIONALS



# Property Description

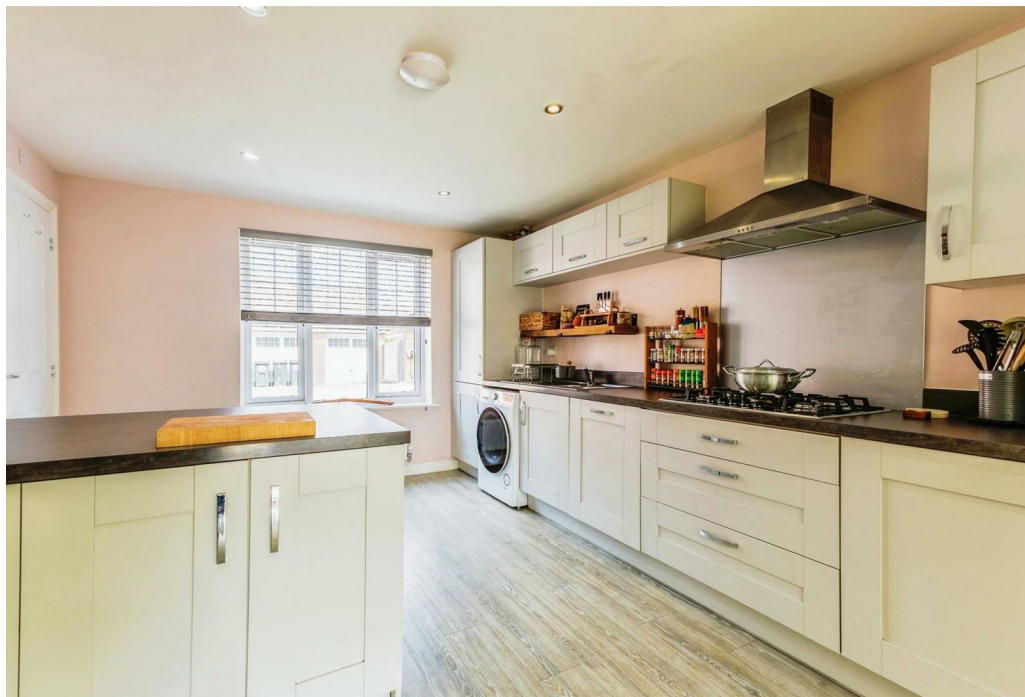
\*\*\* DOUBLE FRONTED AND FOUR DOUBLE BEDROOMS \*\*\* Here is a modern detached residence situated upon this popular development within Weddington which was built to an excellent specification by Taylor Wimpey Homes in 2019.

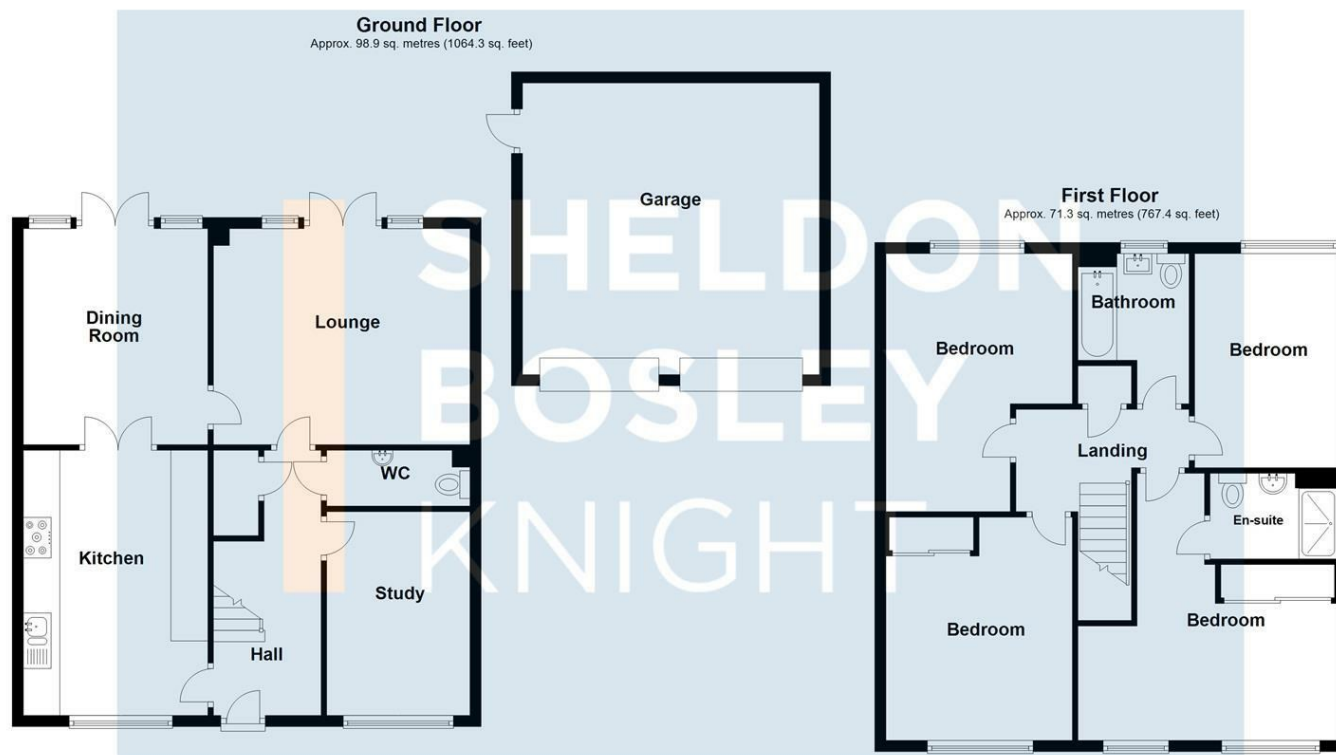
The property has been subsequently improved further by the current owners and offers comfortable, spacious and versatile family accommodation with gas fired central heating, upvc double glazing, twin sets of patio doors, fitted kitchen, fitted wardrobes, security alarm, upvc fascia's, soffits and guttering and an early viewing is recommended.

Briefly comprising: through hall, guests cloakroom, rear lounge, fitted kitchen, dining area, study / sitting room, landing, four double bedrooms, ensuite shower room and family bathroom. Double width driveway, double garage and gardens. EPC RATING B.









Total area: approx. 170.2 sq. metres (1831.7 sq. feet)

All efforts have been made to ensure that the measurements on this floorplan are accurate however these are for guidance purposes only.  
Plan produced using PlanUp.

## Key Features

- Modern double fronted detached home
- Sought after new development
- Taylor Wimpey built 2019
- Close to countryside walks & amenities
- Three reception rooms & kitchen
- Four double bedrooms & ensuite
- Driveway, double garage & gardens
- EPC RATING B

**Offers Over  
£425,000**

EPC Rating - B

Tenure - Freehold

Council Tax Band - E

Local Authority -  
NBBC

We routinely refer clients to both our recommended Legal Firm and a panel of Financial Services Providers. It is your decision whether you choose to deal with these companies. In making that decision, you should know that we receive a referral fee